

FINLAY MINERALS LTD.

COPPER EXPLORATION

IN THE TOODOGGONE DISTRICT

FORWARD LOOKING STATEMENTS

This presentation includes certain “forward-looking information” and “forward-looking statements” (collectively, “forward-looking statements”) within the meaning of applicable Canadian securities legislation. All statements in this presentation that address events or developments that we expect to occur in the future are forward-looking statements. Forward-looking statements are statements that are not historical facts and are generally, although not always, identified by words such as “expect”, “plan”, “anticipate”, “project”, “target”, “potential”, “schedule”, “forecast”, “budget”, “estimate”, “intend” or “believe” and similar expressions or their negative connotations, or that events or conditions “will”, “would”, “may”, “could”, “should” or “might” occur. All such forward-looking statements are based on the opinions and estimates of management as of the date such statements are made. Forward-looking statements in this presentation include statements regarding, among others, the exploration plans for the Company’s properties. Although Finlay believes the expectations expressed in such forward-looking statements are based on reasonable assumptions, such statements are not guarantees of future performance and actual results or developments may differ materially from those forward-looking statements. Factors that could cause actual results to differ materially from those in forward-looking statements include market prices, exploration successes, and continued availability of capital and financing and general economic, market or business conditions. These forward-looking statements are based on a number of assumptions including, among other things, assumptions regarding general business and economic conditions, the timing and receipt of regulatory and governmental approvals, the ability of Finlay and other parties to satisfy stock exchange and other regulatory requirements in a timely manner, the availability of financing for Finlay’s proposed transactions and programs on reasonable terms, and the ability of third-party service providers to deliver services in a timely manner. Investors are cautioned that any such statements are not guarantees of future performance and actual results or developments may differ materially from those projected in the forward-looking statements. Finlay does not assume any obligation to update or revise its forward-looking statements, whether as a result of new information, future or otherwise, except as required by applicable law.

Wade Barnes, P. Geo., is the Vice President, Exploration and Qualified Person for Finlay Minerals Ltd. He has reviewed the technical aspects of this presentation.

ABOUT FINLAY MINERALS

FINLAY MINERALS IS DEDICATED TO RESPONSIBLE EXPLORATION PRACTICES

Our goal is to proactively and transparently communicate with local First Nation communities. We aim to build and maintain positive relationships with the First Nations on whose territories we operate, while also advancing our projects in a way that respects the social, environmental and economic aspirations of all our communities.

COMPANY HIGHLIGHTS

Exceptional Properties – Strategically located in the Toodoggone District and the Driftwood Corridor, with compelling geological potential near significant discoveries.

Team Excellence – Seasoned experience spanning generations across the entire mining spectrum, including exploration, development, mining, and corporate operations.

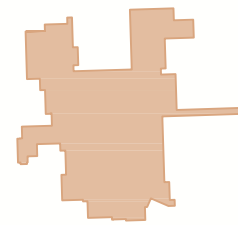
Our technical team possesses proven expertise in BC exploration, led by results-driven Wade Barnes, recipient of the AMEBC’s 2016 H.H. “Spud” Huestis award for excellence in Prospecting and Mineral Exploration, recognized for the discovery of the Kemess East Deposit in the Toodoggone.

Funding – Finlay is fully funded for 2026, with \$3.25 M in the treasury and earn-in agreements with Freeport-McMoRan for the PIL and ATTY Properties. These agreements provide up to \$35 M in exploration funding and \$4.1 M in cash, with Finlay earning an operator’s fee as the Operator of PIL and ATTY.



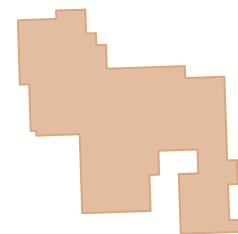
WHY INVEST IN FINLAY MINERALS

100% Owned Projects | Fully Funded for 2026



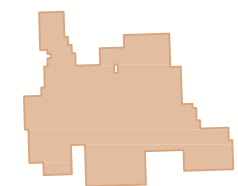
PIL FINLAY MINERALS LTD.* COPPER - GOLD - MOLYBDENUM

Multiple drill ready targets within the prolific Toodoggone district. Finlay is the operator for this Freeport funded project.



ATTY FINLAY MINERALS LTD.* COPPER - SILVER - MOLYBDENUM

Located between Freeport-Amarc's JOY Property which hosts the AuRORA discovery, and Centerra Gold's Kemess deposits. Finlay is the operator for this Freeport funded project.



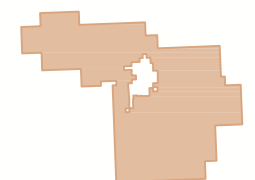
SAY FINLAY MINERALS LTD. HIGH-GRADE COPPER - SILVER

Within a 135 km belt of Stikine Terrane, which hosts American Eagle's NAK, Amarc Resources' DUKE and Quartz Mountain's JAKE Cu-porphyry discoveries.



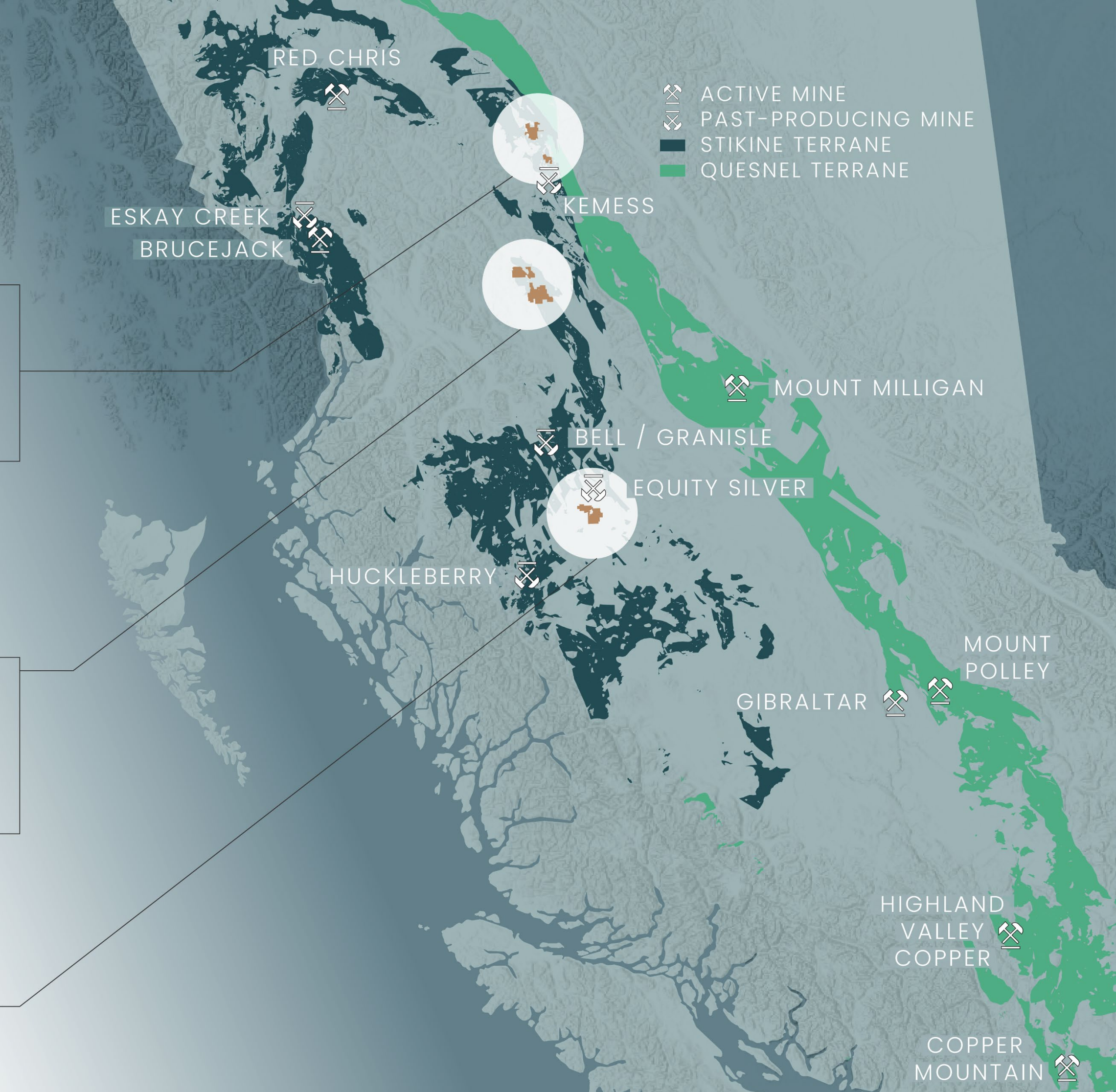
JJB FINLAY MINERALS LTD. COPPER - SILVER - GOLD

Early-stage project in the prospective Driftwood Corridor with analogous geology to the SAY. Property staked by Finlay in 2025.



SILVER HOPE COPPER - SILVER - GOLD

2 km mineralized trend, extending south from the adjacent former Equity Silver Mine.



- ACTIVE MINE
- PAST-PRODUCING MINE
- STIKINE TERRANE
- QUESNEL TERRANE

WHY INVEST IN FINLAY MINERALS



Strategic Earn-in Agreement with Freeport-McMoRan*

Freeport has committed up to \$35 million in exploration spending and \$4.1 million in cash payments for an 80 percent interest in Finlay's PIL and ATTY projects, validating their district-scale potential.



Dominant Land Position in the Toodoggone District

PIL and ATTY provide direct exposure to one of BC's most active copper-gold corridors, adjacent to Centerra's Kemess complex and Freeport-Amarc's AuRORA discovery.



Unlocking the Driftwood Corridor

The SAY and JJB properties offer large-scale exploration potential in an underexplored region analogous to major Cu-Au porphyry discoveries like American Eagle's NAK and Amarc's DUKE.



Disciplined Exploration Focus

More than 70 percent of all capital raised has gone directly into the ground, demonstrating Finlay's capital-efficient approach and scientific rigor.



Proven Leadership Legacy

Founded by renowned geochemist John J. Barakso and led by a technically adept team with deep experience in BC exploration.



Investment Protection

No share consolidations. Led by experienced Directors and Management with large share positions.

FINLAY MINERALS SHARE STRUCTURE

45.6% INSIDER CONTROLLED

FULLY FUNDED FOR 2026

DEBT FREE



Dated: January 10, 2025 - January 6, 2026 Source: S&P Capital IQ

169,900,985

Shares Issued

12,350,000

Options

13,123,382

Warrants

1,477,503

Agent's Warrants

196,851,870

Fully Diluted

\$17,840,000

Market Capitalization

Dated May 14, 2026

— OUR PROPERTIES

PIL & ATTY



PIL & ATTY PROPERTIES

TOODOGGONE COPPER PORPHYRY CORRIDOR

PROJECT OVERVIEW

Finlay Minerals holds a total of **17,249 hectares** neighbouring significant copper porphyry discoveries within the active and mining friendly Toodoggone District.

PIL & ATTY are permitted and drill ready for the 2026 season.

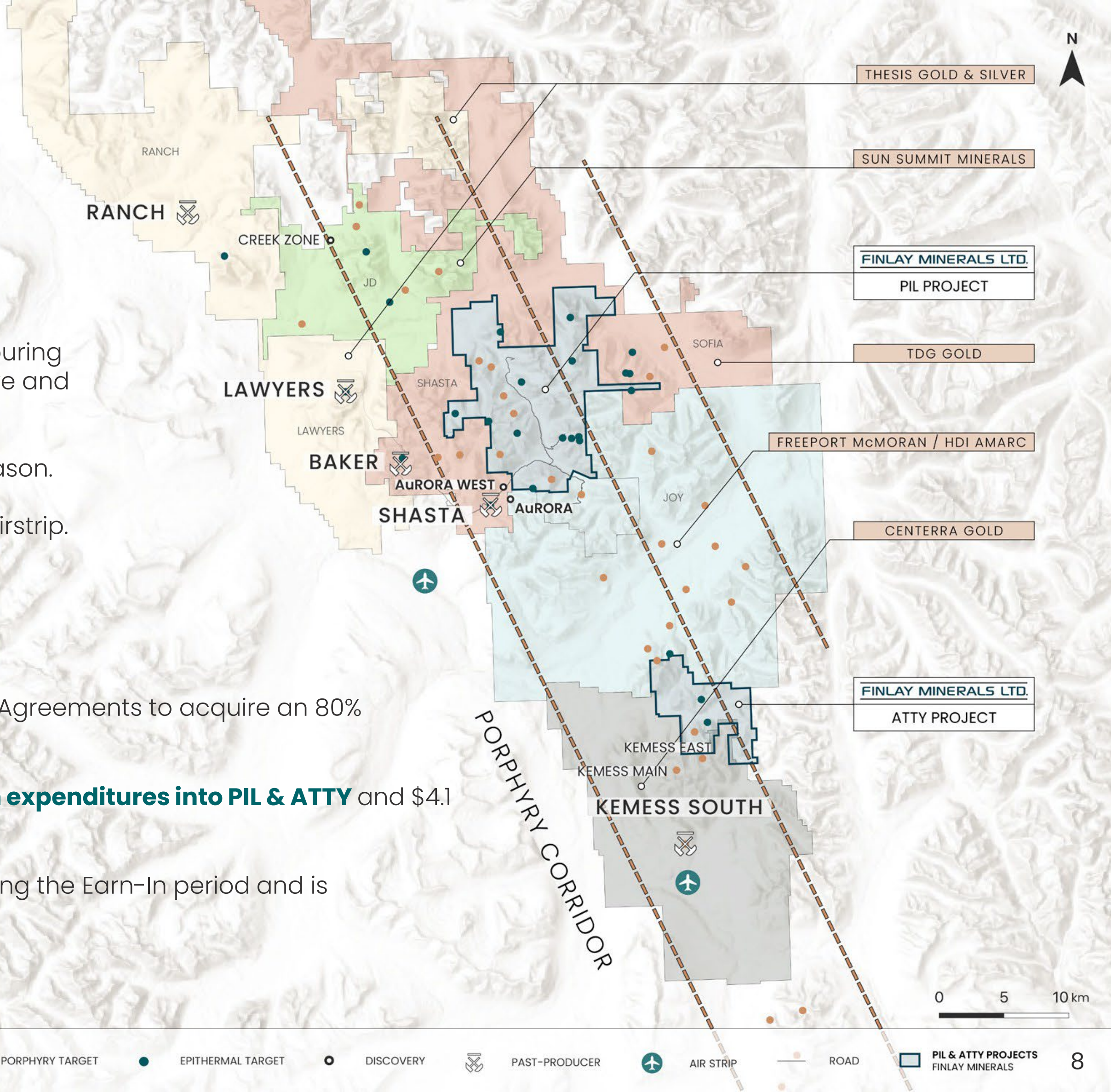
Road accessible projects, within 20 km of the Sturdee Airstrip.

RECENT ADVANCES

In 2025, **Freeport-McMoRan** signed two 6 year Earn-In Agreements to acquire an 80% interest in both the PIL & ATTY Properties.

The agreements will infuse a total of **\$35 M exploration expenditures into PIL & ATTY** and \$4.1 M cash into Finlay Minerals.

Finlay's team is managing the PIL & ATTY programs during the Earn-In period and is **receiving an Operator's Fee** from Freeport.



PIL & ATTY PROPERTIES

EXCEPTIONAL LOCATION WITH A COMPELLING VALUATION

CU-AU PORPHYRY NEIGHBOURS

AURORA | Freeport-McMoRan & Amarc Resources

Drill hole JP25109: 201 m of 1.38 g/t Au, 0.27% Cu and 1.6 g/t Ag from 220 m

KEMESS SOUTH | Centerra Gold

Past Production: 750 M lbs Cu & 3.0 Moz Au from 218 Mt

KEMESS MAIN, SOUTH, U/G & EAST | Centerra Gold Combined

Indicated Resource: 1,146 M lbs Cu, 3,269 Moz Au and 10.78 Moz Ag in 244.43 Mt

AURORA WEST | TDG Gold

Drill hole TDG25-002: 164.0 m of 1.02 g/t Au, 0.24% Cu and 2.0 g/t Ag from 186 m

AG-AU EPITHERMAL NEIGHBOURS

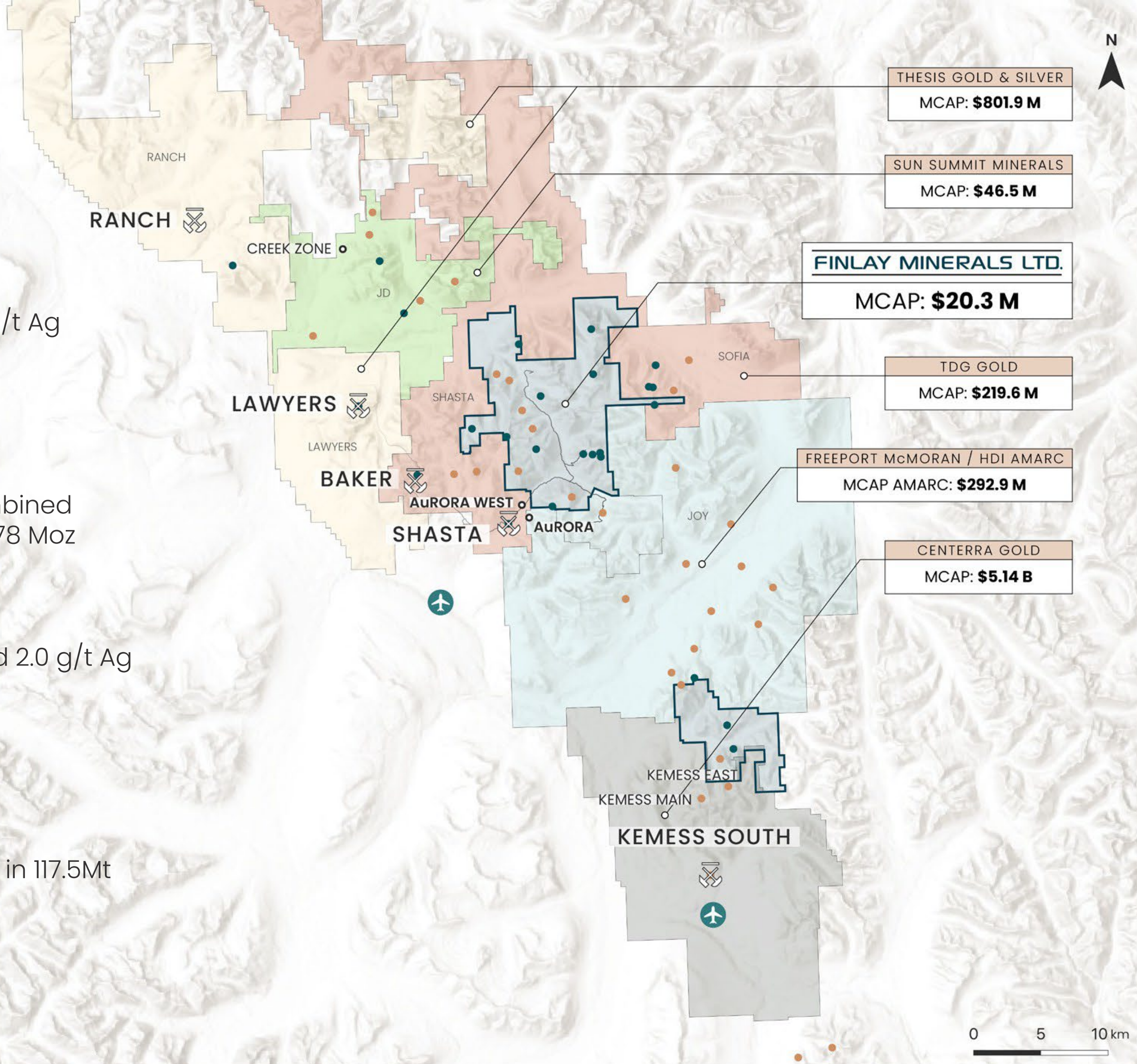
LAWYERS-RANCH | Thesis Gold & Silver

Combined M+I Resource: 3.34 Moz Au and 97.89 Moz Ag in 117.5Mt

SHASTA | TDG Gold

Indicated Resource: 0.389 Moz Au & 14.3 Moz Ag in 11.9Mt

Market cap values are in \$CAD from TSX-V on February 23rd, 2026.
Centerra Gold listed on TSX. See appendix for all drill results, MRE & production sources.



PIL OVERVIEW

COPPER - GOLD - MOLYBDENUM

13,374 hectare land package.

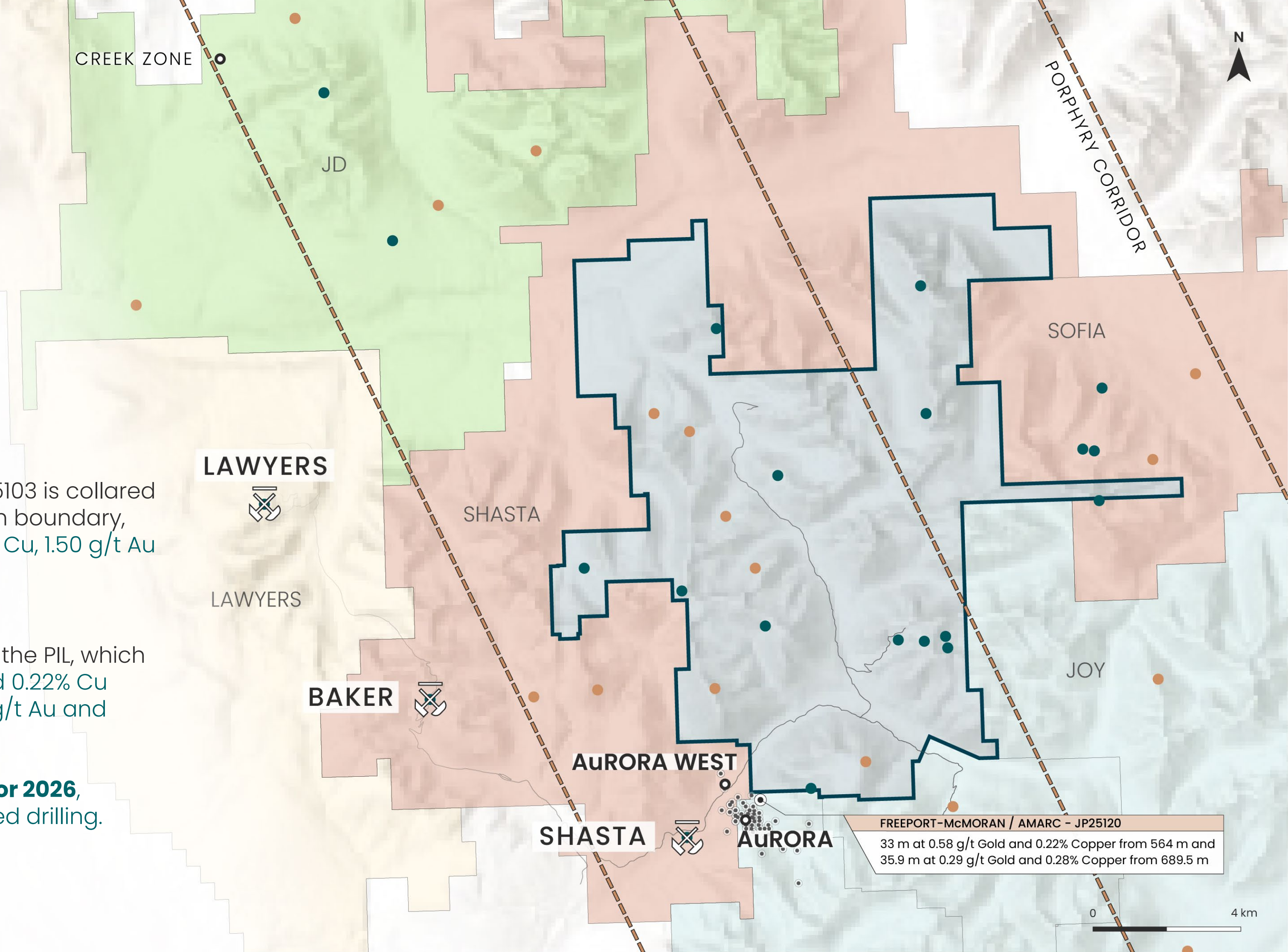
Multiple **Cu-Au ± Mo porphyry** and epithermal Au-Ag targets.

Freeport-McMoRan/Amarc's AuRORA discovery drill hole JP25103 is collared 420 meters south of the PIL claim boundary, which returned 47.28 m of 0.44% Cu, 1.50 g/t Au and 5.4 g/t Ag from 329.0 m.*

JP25120 lies 200 meters south of the PIL, which returned 33 m at 0.58 g/t Au and 0.22% Cu from 564 m and 35.9 m at 0.29 g/t Au and 0.28% Cu from 689.5 m.*

\$3.5 million budget approved for 2026, including 2,800 meters of planned drilling.

* See appendix for source



FREEPORT-McMORAN / AMARC - JP25120
 33 m at 0.58 g/t Gold and 0.22% Copper from 564 m and 35.9 m at 0.29 g/t Gold and 0.28% Copper from 689.5 m

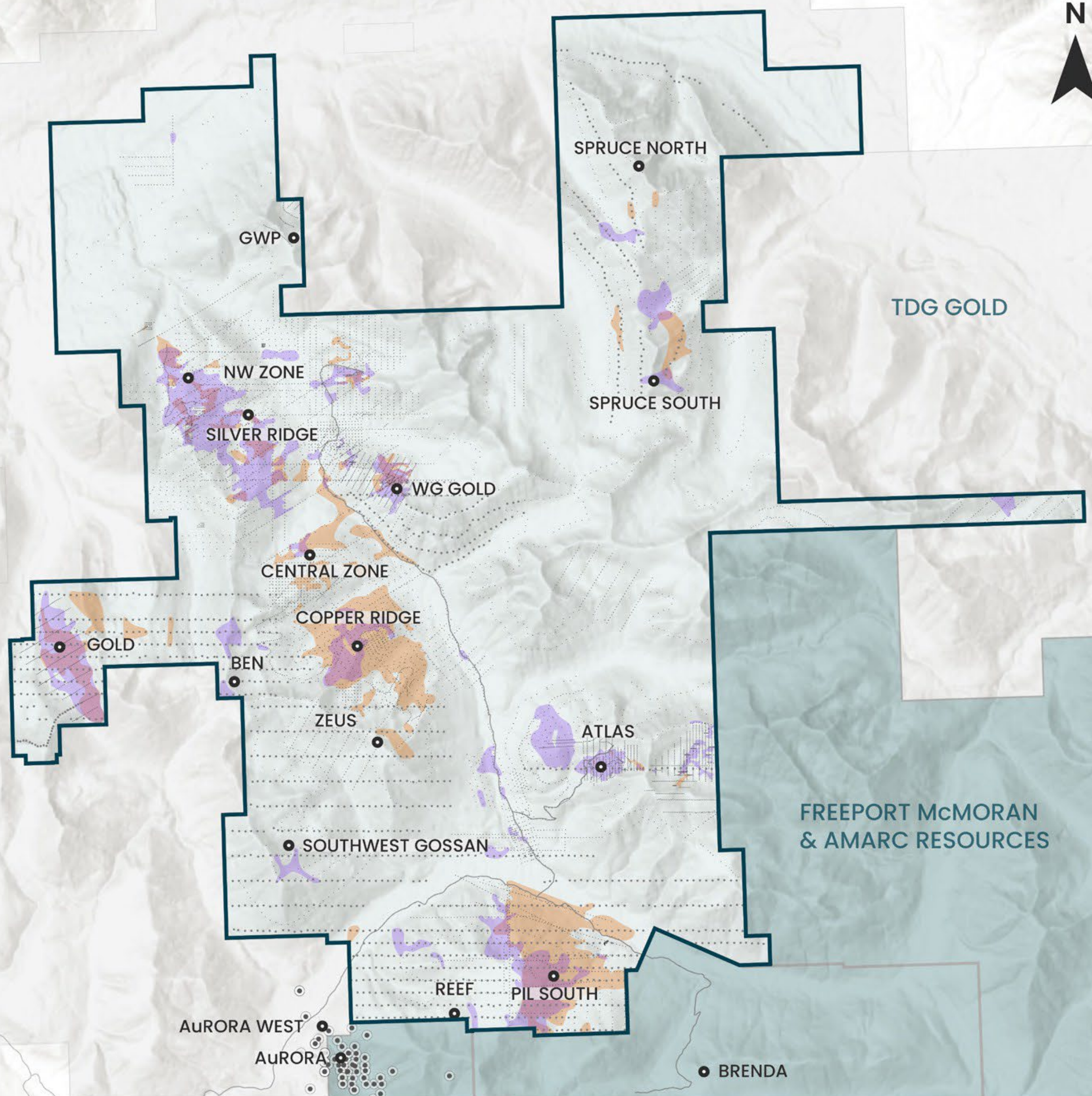
PIL COPPER

COPPER - GOLD - MOLYBDENUM

Kilometer-scale copper in-soil anomalies with locally coincident elevated gold and/or molybdenum, in addition to geophysical anomalies.

The **Copper Ridge** target area is 1.9 km x 1.3 km copper-in-soil anomaly that has not been drill tested.

There has been very limited drilling at the **2.5 km x 2.0 km copper-in-soil anomaly** at PIL South. Results include 162.0 meters of 0.10% Cu, 0.05 g/t Au, 7.0 g/t Ag and 0.18% Zn from 749.0 meters (PILS-24-006).



ATTY OVERVIEW

COPPER - SILVER - MOLYBDENUM

Situated along the northwest trend between the Kemess Underground, Open Pit & East deposits and the AuRORA discovery.

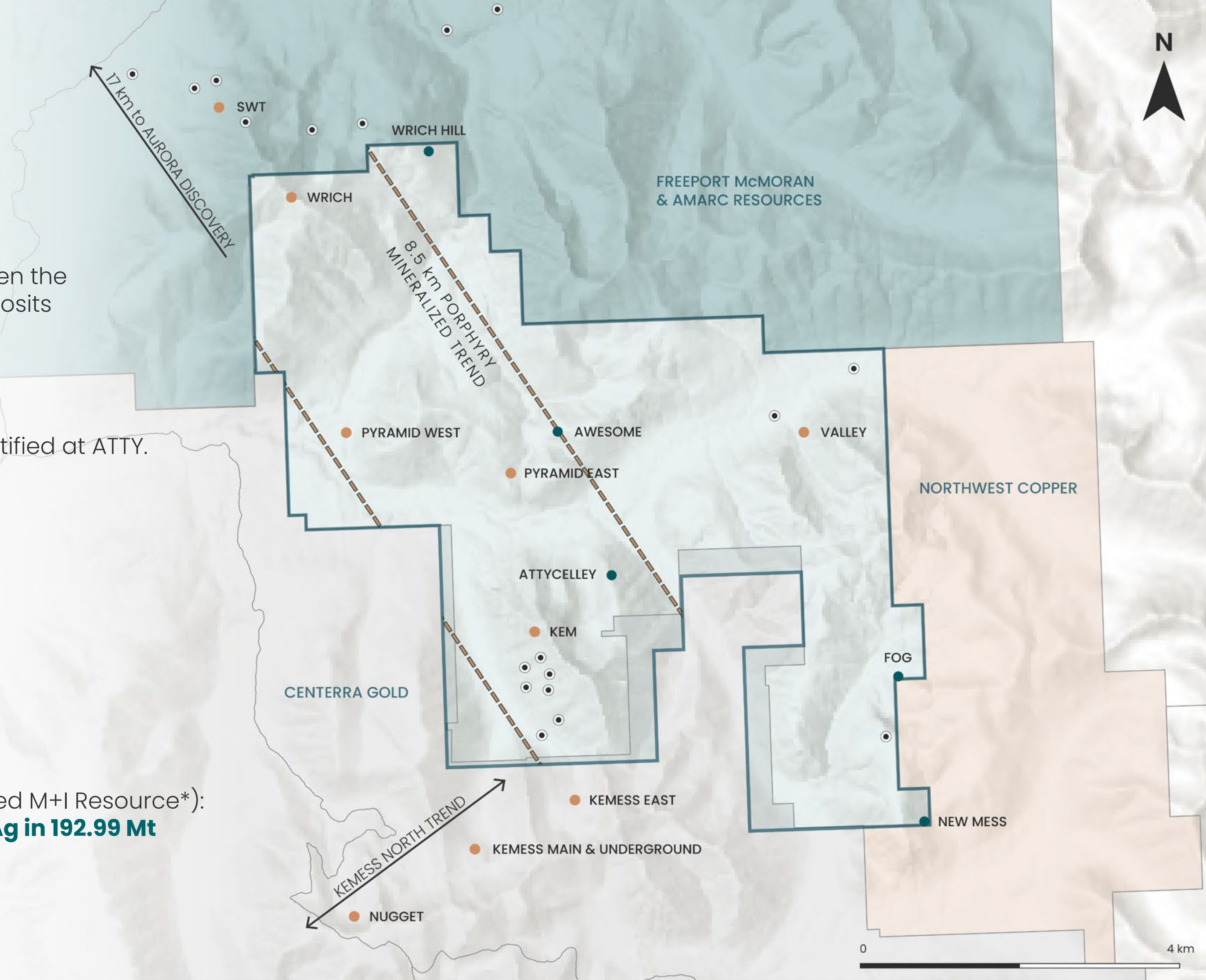
10 porphyry & epithermal targets identified at ATTY.

3,875 hectare land package.

Permitted and drill-ready.

\$800,000 budget approved for 2026.

KEMESS MAIN & U/G, KEMESS EAST (combined M+I Resource*):
971 M lbs Cu, 2.742 Moz Au and 8.99 Moz Ag in 192.99 Mt



ATTY TARGETS

COPPER - SILVER - MOLYBDENUM

PORPHYRY AND PORPHYRY RELATED TARGETS

WRICH: 1,200 m x 1,200 m Cu-Au-Ag-Mo soil geochemical and chargeability anomaly connected to the SWT target.

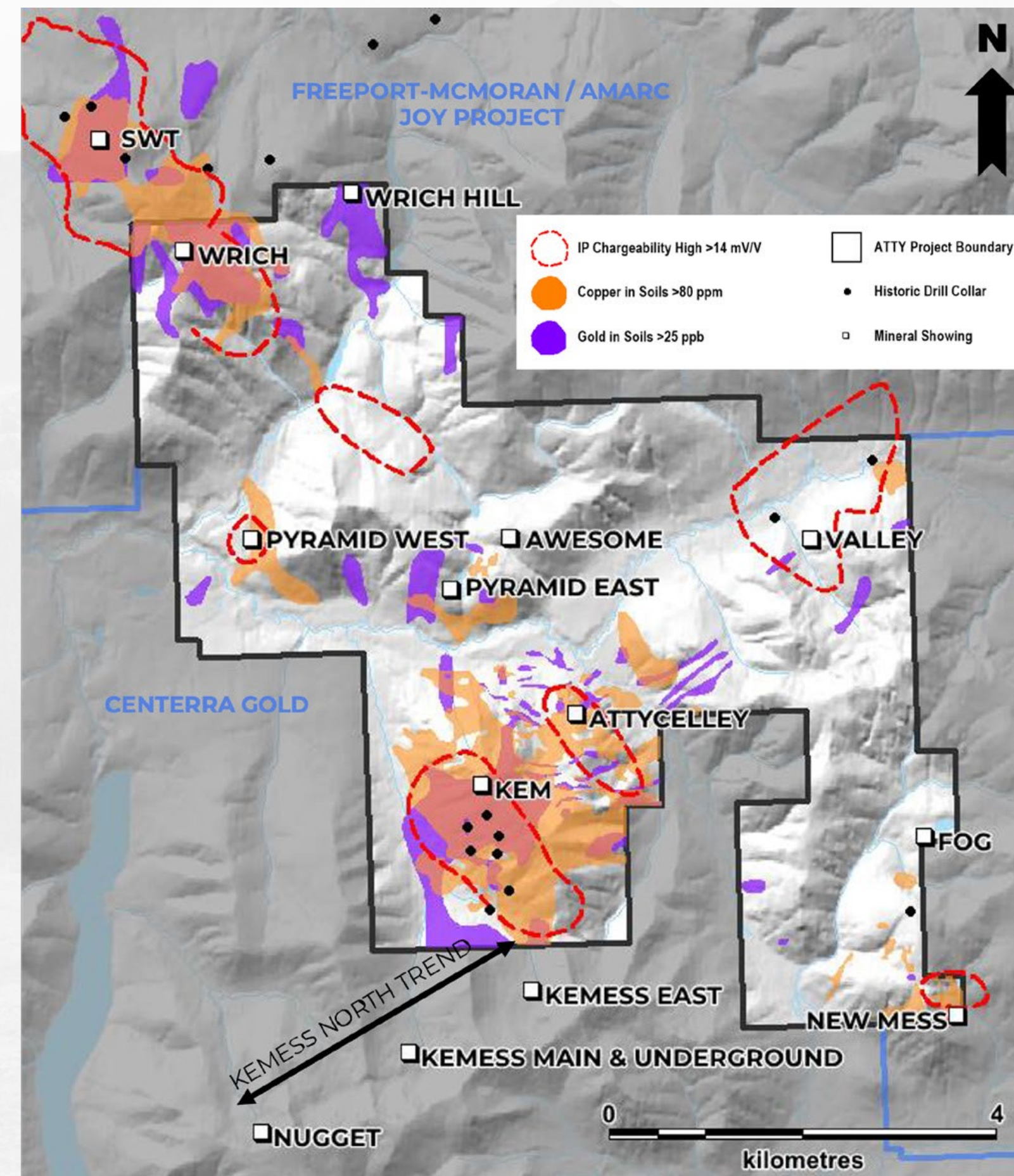
WRICH HILL: 1,200 m x 600 m Au-Bi-Pb-Te-Zn soil geochemical anomaly where, to the north, Freeport/Amarc intersected 108 m 0.03% Cu, 0.23 g/t Au, 6.4 g/t Ag in JP22044 in correlation with advanced argillic alteration zones.

PYRAMID WEST: hosts a 200 m x 200 m Cu-Au-Mo-Te soil geochemical anomaly, open to the north where a single IP line resulted in a 500 m chargeability high.

PYRAMID EAST: has a continuous chargeability high that could connect to the Wrich target and trends southeast to an 800 m x 850 m Cu-Au soil geochemical anomaly and a circular magnetic anomaly.

KEM+ATTYCELLEY: 1,100 m x 2,200 m chargeability and Cu+Au+Mo soil geochemical anomaly at KEM and a 500 m x 2,300 m chargeability and Cu+Ag+Pb+Zn soil anomaly associated with a magnetic anomaly.

VALLEY: 1,800 m long chargeability anomaly where historic drilling intersected patchy propylitic and phyllic altered rocks with anomalous Cu peripheral to a porphyry.



— OUR PROPERTIES

SAY & JJB



SAY & JJB PROPERTIES

SAY PROPERTY - 100% OWNED

26,202 hectare land package.

140 km north of Smithers with road access to the southeast end of the project.

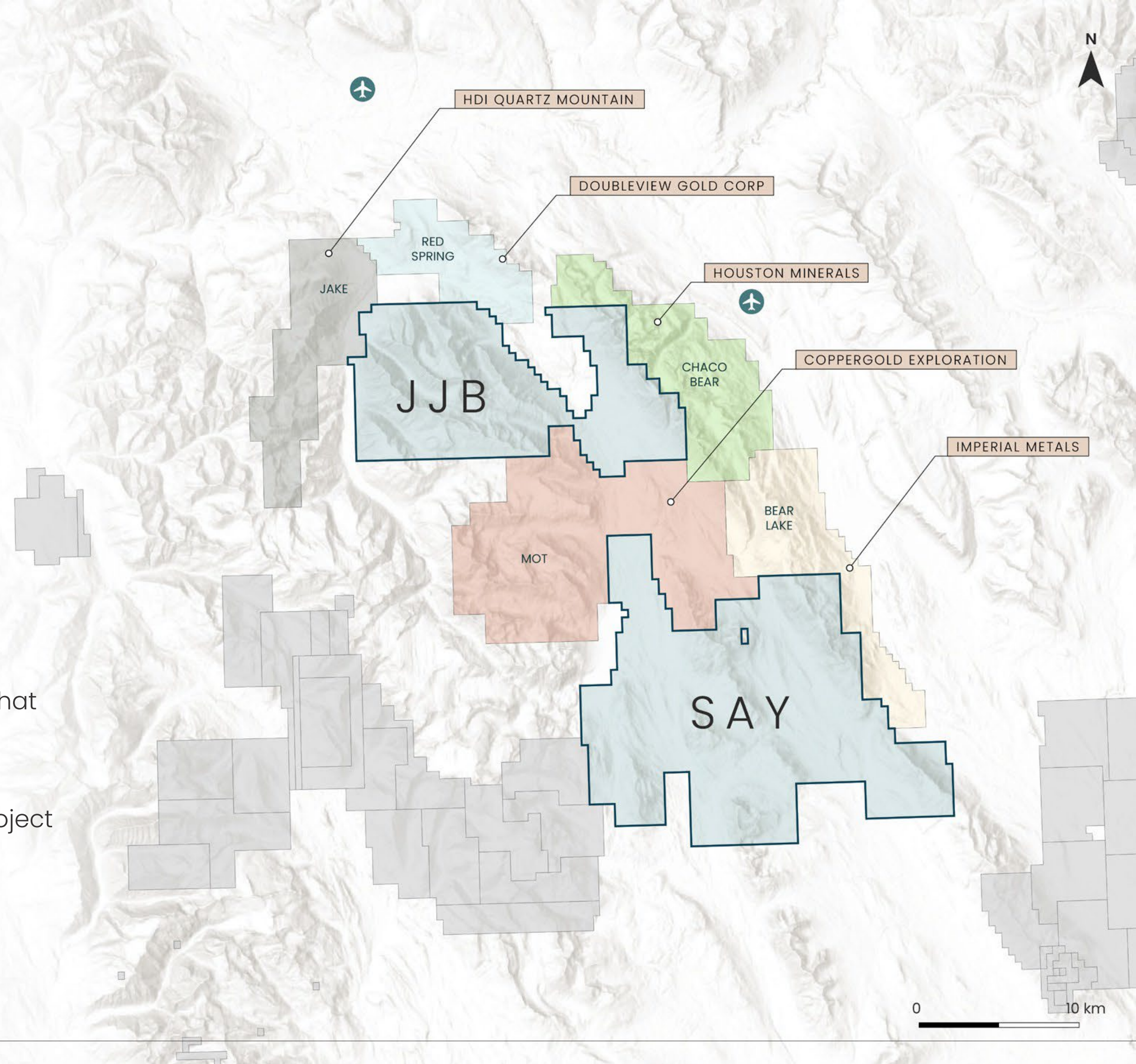
Strategically located within the underexplored 135-km-long "Driftwood Corridor" of Stikine Terrane.

JJB PROPERTY - 100% OWNED

15,453 hectare land package.

4 km north of SAY Property with nearby logging roads that connect with Smithers and Fort St. James.
10 km from local airstrip.

Prospective, greenfields - stage, copper exploration project with a limited work history.



SAY PROPERTY

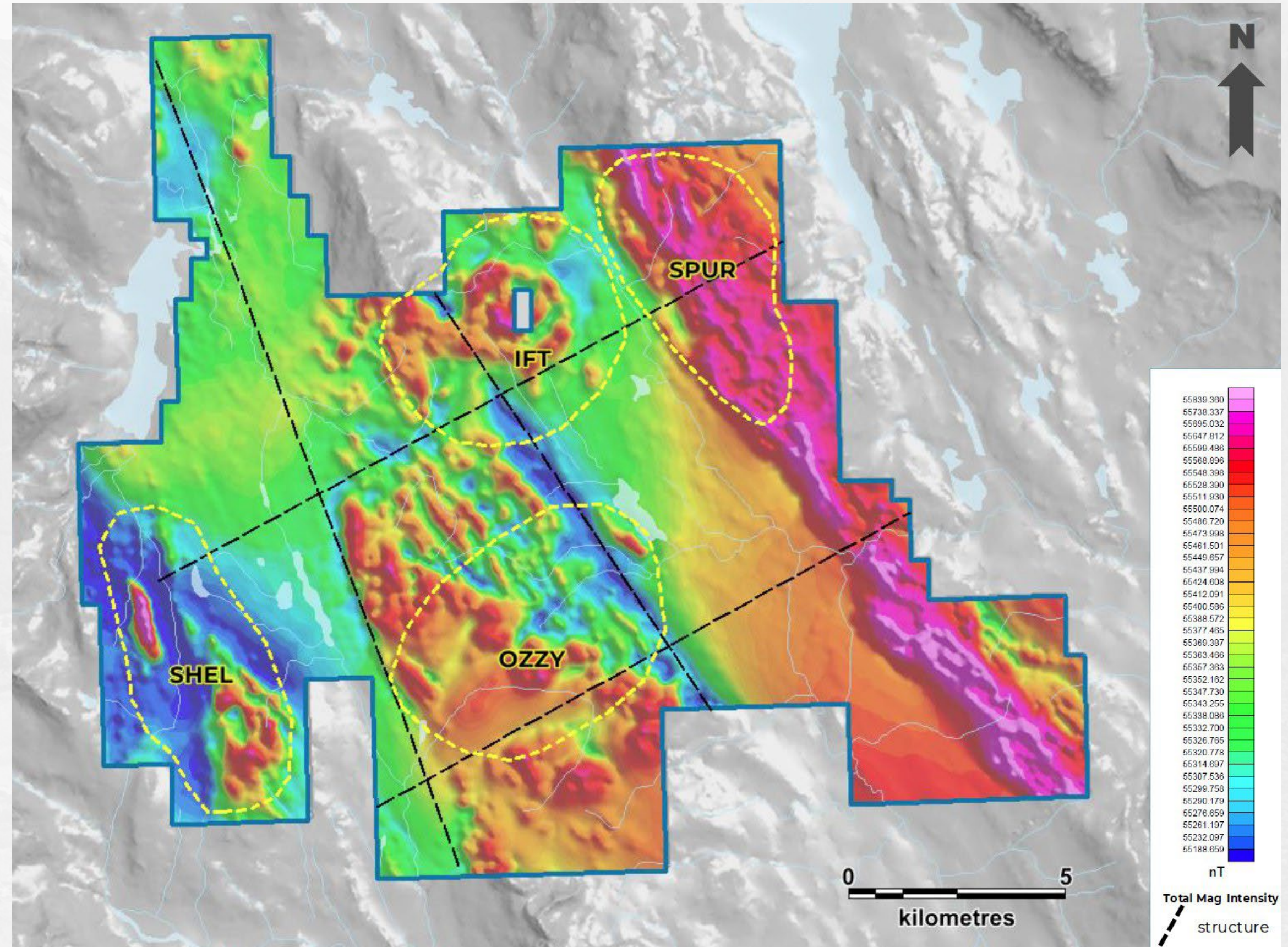
HIGH-GRADE COPPER - SILVER

IFT A large circular magnetic anomaly, measuring 2.5 km by 2.5 km, was identified in 2025. This anomaly displays geophysical signatures similar to those observed in other copper porphyry deposits.

SPUR Under explored structurally mineralized corridor, along a 4.3 km trend with coincident mag-high signature.

SHEL The porphyry target hosts 2 main areas of interest with coincident soil and rock Cu-Mo anomalies and magnetic signatures.

OZZY The 2025 exploration season identified a km-scale porphyry target, located at the intersection of northeast and northwest-trending mag anomalies.



JJB PROPERTY

COPPER - SILVER - GOLD

QUIN & SQUINGULA

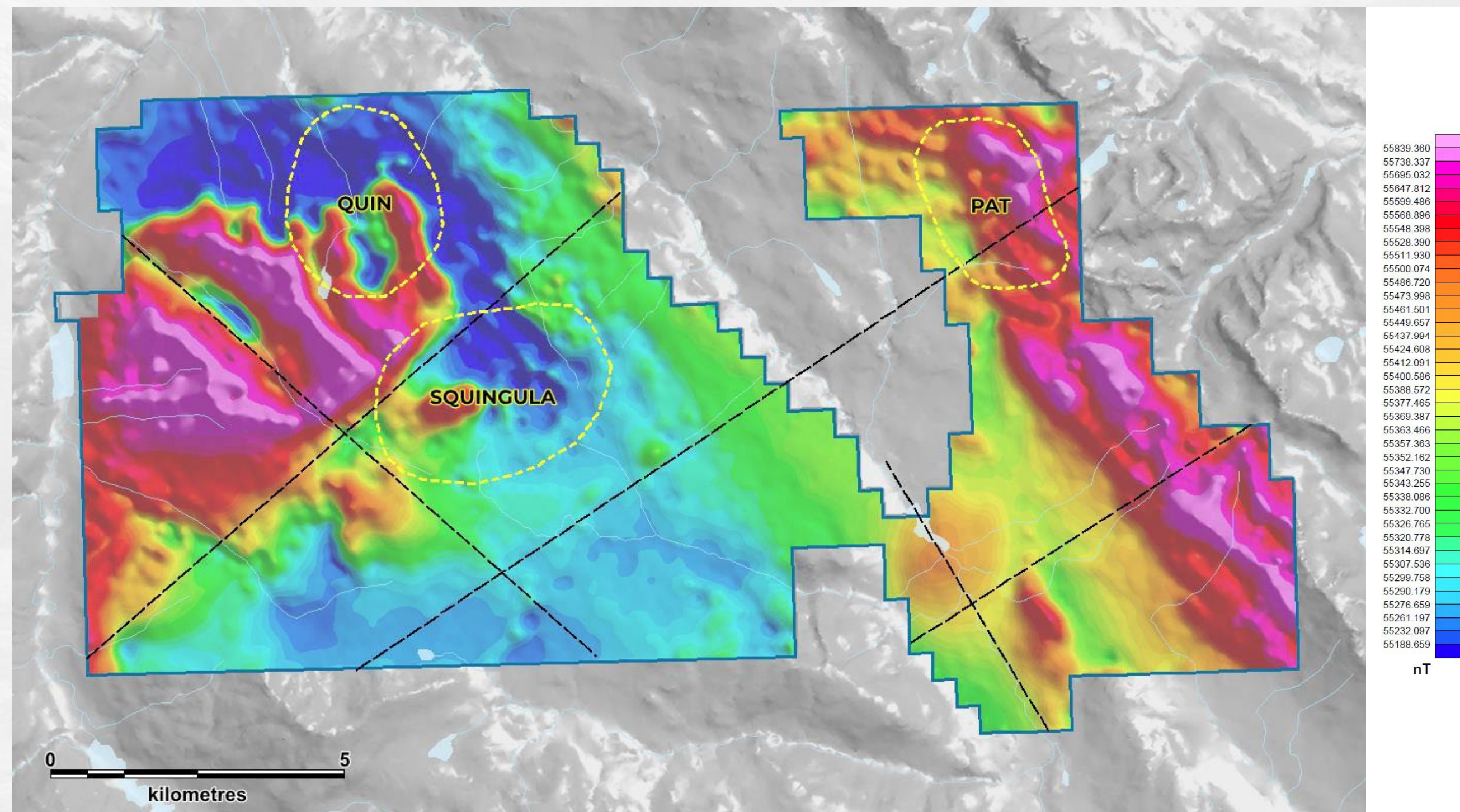
Cu-Au-Mo

Early-stage targets comprised of coincident magnetic highs linked to multi-element geochemical anomalies from limited historic sampling programs.

PAT

HIGH-GRADE Cu-Ag

An early-stage target covering favourable mag-high anomalies, structures and rock samples with >1 % copper.



— OUR PROPERTIES

SILVER HOPE



SILVER HOPE PROPERTY

COPPER - SILVER - GOLD

Positioned in a highly prospective area with producing and past-producing mines as well as brownfields exploration projects as neighbours.

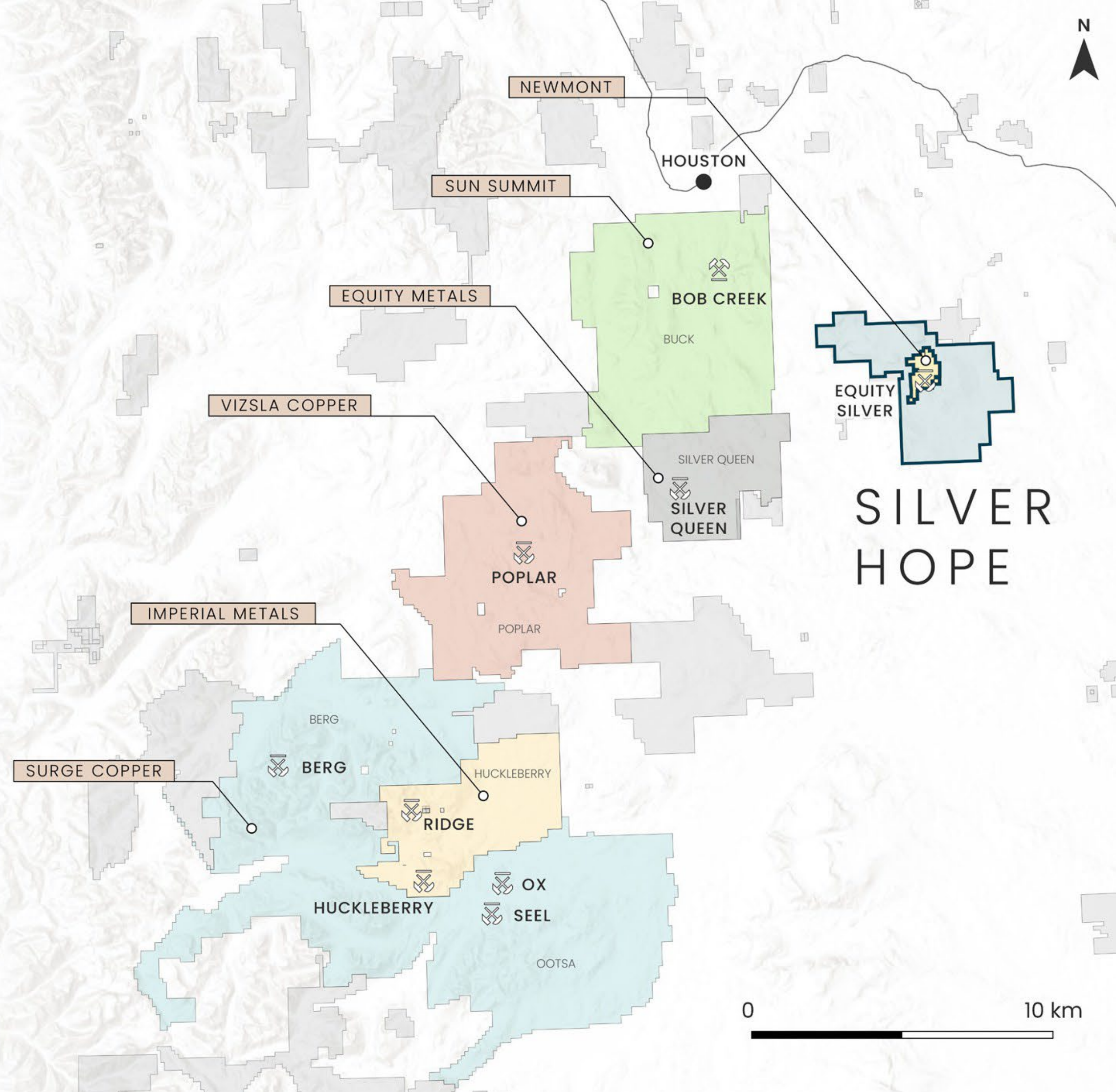
100% owned, 21,322 hectare property surrounding the former Equity Silver Mine.

Year-round access from Houston, BC (38 km north).

Currently permitted for drilling and induced polarization surveys.

179 holes collared totalling 41,041 meters drilled on the property.

Main Trend is a Cu-Ag-Au **>2 km mineralized zone** that remains open at depth and to the south.



SILVER HOPE TARGETS

COPPER - SILVER - GOLD

WEST PORPHYRY

>1 km long Cu-Mo porphyry zone due west of the Main Trend hosting significant Cu-Ag-Mo mineralization potential.

EAST TREND

600 m x 800 m area of >100 ppm Cu soil geochemical anomaly with coincident chargeability high.

EQUITY EAST

Drilling in 2022 intersected anomalous Cu-Ag-Pb-Zn mineralization distal to the target.

MAIN TREND

>2 km mineralized trend that hosts the Gaul, Superstition and Hope Zones, along trend with the past-producing Equity Silver Mine.

DINA EAST

Overlapping porphyry and polymetallic target generated by ALS GOLDSLOT with a CSAMT resistivity anomaly at depth below the target.

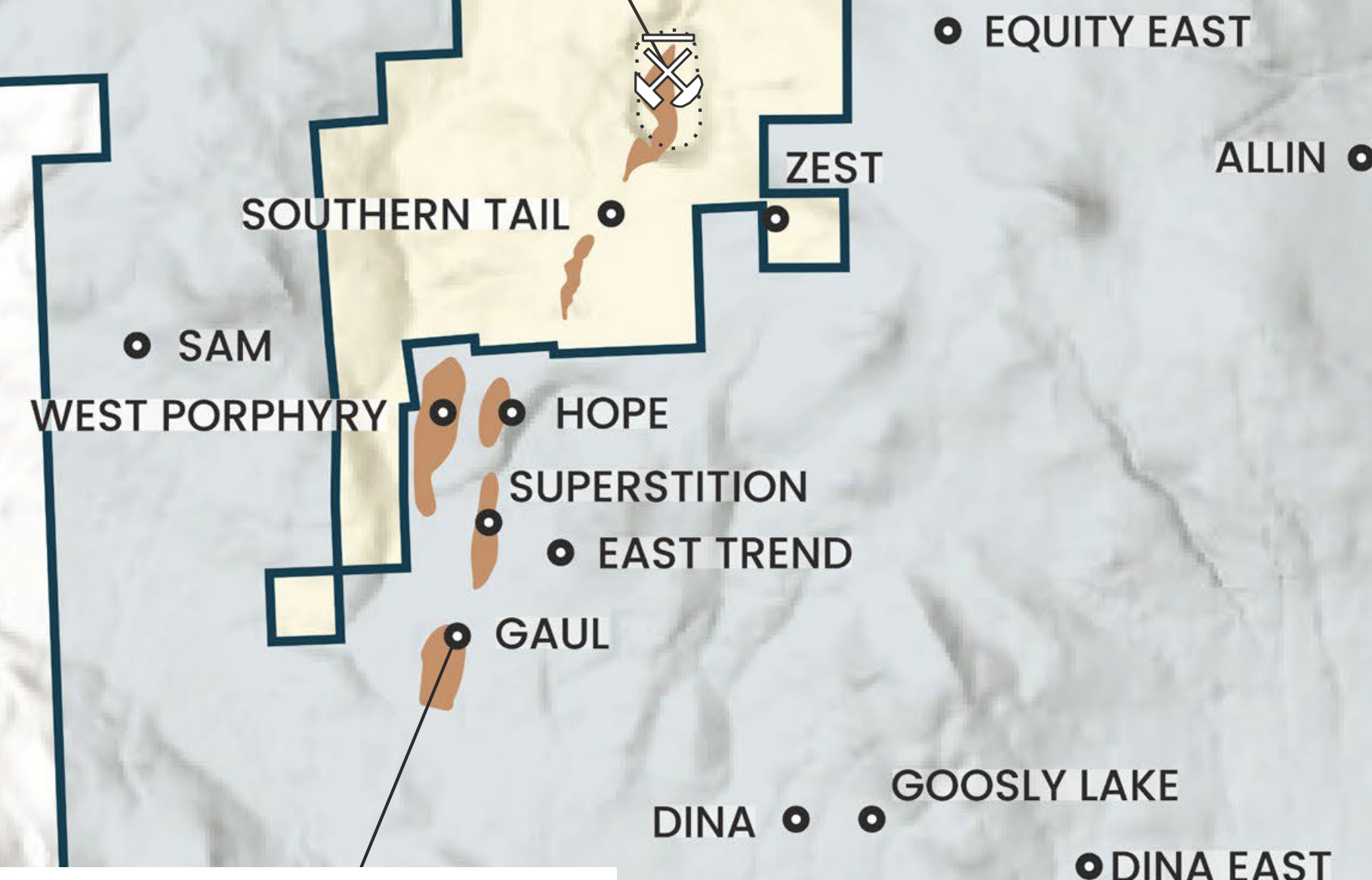
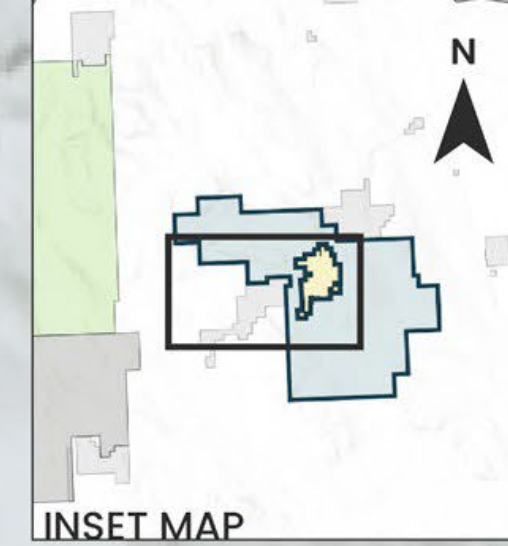
EQUITY SILVER

71.36 M oz Silver, 0.508 M oz Gold and 185 Mlbs Copper from 33.8Mt*

* See appendix for source

GAUL ZONE

SH21-09: 123 m of 127% Copper, 74.5 g/t Silver, and 1.88 g/t Gold at 821 m



OUR TEAM

ILONA BARAKSO LINDSAY B.Sc.
PRESIDENT, CEO, DIRECTOR

Over 18 years of experience in the mineral exploration sector, including 15 years with Finlay, with an emphasis on private and public company management. Ms. Lindsay is a director of the Barakso family companies.

SUSAN FLASHA M.Sc., P.Geo.
VICE PRESIDENT CORPORATE
DEVELOPMENT

A geologist with over 20 years experience in the industry. The last 15 years have been in senior management roles with Brixton Metals and with Pretium Resources at the Brucejack Mine.

ALVIN JACKSON B.Sc.
INDEPENDENT DIRECTOR

Vice President, Exploration and Development & Director of Freegold Ventures. Former President & CEO/COO of Eurozinc Mining Corporation.

ROBERT F. BROWN
EXECUTIVE CHAIRMAN OF THE BOARD, DIRECTOR

One of Finlay's founders and a retired Professional Engineer with over 40 years experience in the mining industry. Former Vice President, Exploration for Great Panther Mining Ltd. and former geologist with LAC Minerals.

GORD STEBLIN B.Comm., CPA, CGA
CFO

Has over 30 years of experience in the mining / exploration industry and serves as CFO of 3 other companies in the sector.

KRISTINA WALCOTT
INDEPENDENT DIRECTOR

President and CEO of Freegold Ventures Limited since 2009, and a director since 2010.

WADE BARNES B.Sc. – Geology, P. Geo., Q.P.
VICE PRESIDENT EXPLORATION

Over 20 years geology experience and a Qualified Person (QP) as defined by National Instrument 43-101. Co-received the H.H. "Spud" Huestis Award from AMEBC in 2016 for excellence in Prospecting and Mineral Exploration for the discovery of the Kemess East deposit.

DAVID A. SCHWARTZ B. Comm., J.D.
SECRETARY, DIRECTOR

Retired Barrister, Solicitor, Arbitrator and Notary in corporate and securities law predominantly with junior natural resource companies.

DR. JOHN A. BARAKSO DMD
DIRECTOR

Retired from dentistry after 29 years. Dr. Barakso is a director of the Barakso family companies.

SOURCES

CLICK THE LINKS BELOW TO LEARN ABOUT SIGNIFICANT NEIGHBOURING PROJECTS

[Amarc Canyon and SWT Discovery Drill Results](#)

[Amarc High Grade AuRORA Copper-Gold-Silver Drill Results](#)

[Amarc And Freeport Continue Expanding High Grade AuRORA Copper-Gold-Silver Deposit Kemess](#)

[South Past Production](#)

[Kemess Main, South, Underground and East Combined Indicated Resource Estimate, December, 2025 Lawyers-](#)

[Ranch Project Measured & Indicated Resource Estimate](#)

[Shasta Project Indicated Resource Estimate](#)

[TDG Gold AuWEST Drill Results](#)

[Equity Silver Mine Historic Production from BC MINFILE](#)

LEARN MORE ABOUT FINLAY MINERALS

CONTACT

ILONA BARAKSO LINDSAY

PRESIDENT, CEO, DIRECTOR


 778.384.5706
 iblindsay@finlayminerals.com

ROBERT F. BROWN

EXECUTIVE CHAIRMAN OF THE BOARD, DIRECTOR

 604.816.7043
 rbrown@finlayminerals.com

FURTHER INFORMATION

 [TECHNICAL PRESENTATIONS](#)

 [PIL WEBPAGE](#)

 [ATTY WEBPAGE](#)

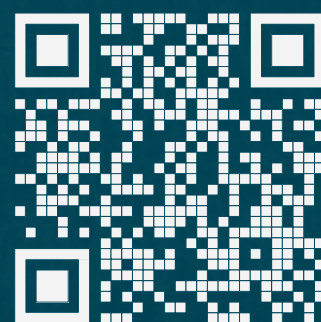
 [SAY WEBPAGE](#)

 [JJB WEBPAGE](#)

 [SILVER HOPE WEBPAGE](#)

TSXV: FYL | OTCQB: FYMNF

FINLAY MINERALS LTD.



AT OUR CORE: EXCEPTIONAL ASSETS + TECHNICAL EXCELLENCE = ROAD TO DISCOVERY