

FINLAY MINERALS LTD.

TSX-V: FYL | OTCQB: FYMNF

**A 30 YEAR LEGACY OF COPPER
EXPLORATION IN THE
TOODOGGONE DISTRICT**

MARCH 2025

CAUTIONARY & FORWARD-LOOKING INFORMATION

This presentation includes certain “forward-looking information” and “forward-looking statements” (collectively, “forward-looking statements”) within the meaning of applicable Canadian securities legislation. All statements in this presentation that address events or developments that we expect to occur in the future are forward-looking statements. Forward-looking statements are statements that are not historical facts and are generally, although not always, identified by words such as “expect”, “plan”, “anticipate”, “project”, “target”, “potential”, “schedule”, “forecast”, “budget”, “estimate”, “intend” or “believe” and similar expressions or their negative connotations, or that events or conditions “will”, “would”, “may”, “could”, “should” or “might” occur. All such forward-looking statements are based on the opinions and estimates of management as of the date such statements are made. Forward-looking statements in this presentation include statements regarding, among others, the exploration plans for the Company’s properties. Although Finlay believes the expectations expressed in such forward-looking statements are based on reasonable assumptions, such statements are not guarantees of future performance and actual results or developments may differ materially from those forward-looking statements. Factors that could cause actual results to differ materially from those in forward-looking statements include market prices, exploration successes, and continued availability of capital and financing and general economic, market or business conditions. These forward-looking statements are based on a number of assumptions including, among other things, assumptions regarding general business and economic conditions, the timing and receipt of regulatory and governmental approvals, the ability of Finlay and other parties to satisfy stock exchange and other regulatory requirements in a timely manner, the availability of financing for Finlay’s proposed transactions and programs on reasonable terms, and the ability of third-party service providers to deliver services in a timely manner. Investors are cautioned that any such statements are not guarantees of future performance and actual results or developments may differ materially from those projected in the forward-looking statements. Finlay does not assume any obligation to update or revise its forward-looking statements, whether as a result of new information, future or otherwise, except as required by applicable law.

Wade Barnes, P. Geo., is the Vice President, Exploration and Qualified Person for Finlay Minerals Ltd. He has reviewed the technical aspects of this presentation.

FINLAY MINERALS LTD.



FINLAY MINERALS IS DEDICATED TO RESPONSIBLE EXPLORATION PRACTICES

Our goal is to proactively and transparently communicate with local First Nation communities. We aim to build and maintain positive relationships with the First Nations on whose territories we operate, while also advancing our projects in a way that respects the social, environmental, and economic aspirations of all our communities.

FINLAY PROPERTIES

EXPLORING FOR COPPER IN BC 100% owned projects

PIL

COPPER – GOLD - MOLYBDENUM

Property hosts **multiple Cu-Au-Mo porphyry** and Au-Ag epithermal targets within the prolific **Toodoggone district**. The southern claim boundary is contiguous with Amarc Resources & Freeport-McMoRan's Cu-Au-Ag porphyry **AuRORA discovery**.

ATTY

COPPER-SILVER-MOLYBDENUM

Located on trend and along the **north boundary of Centerra Gold's Kemess Underground and Kemess East Cu-Au porphyry deposits** in the Toodoggone. The ATTY property hosts **Cu-Ag-Mo porphyry** and Au-Ag-Cu-Pb-Zn epithermal mineralization.

SAY

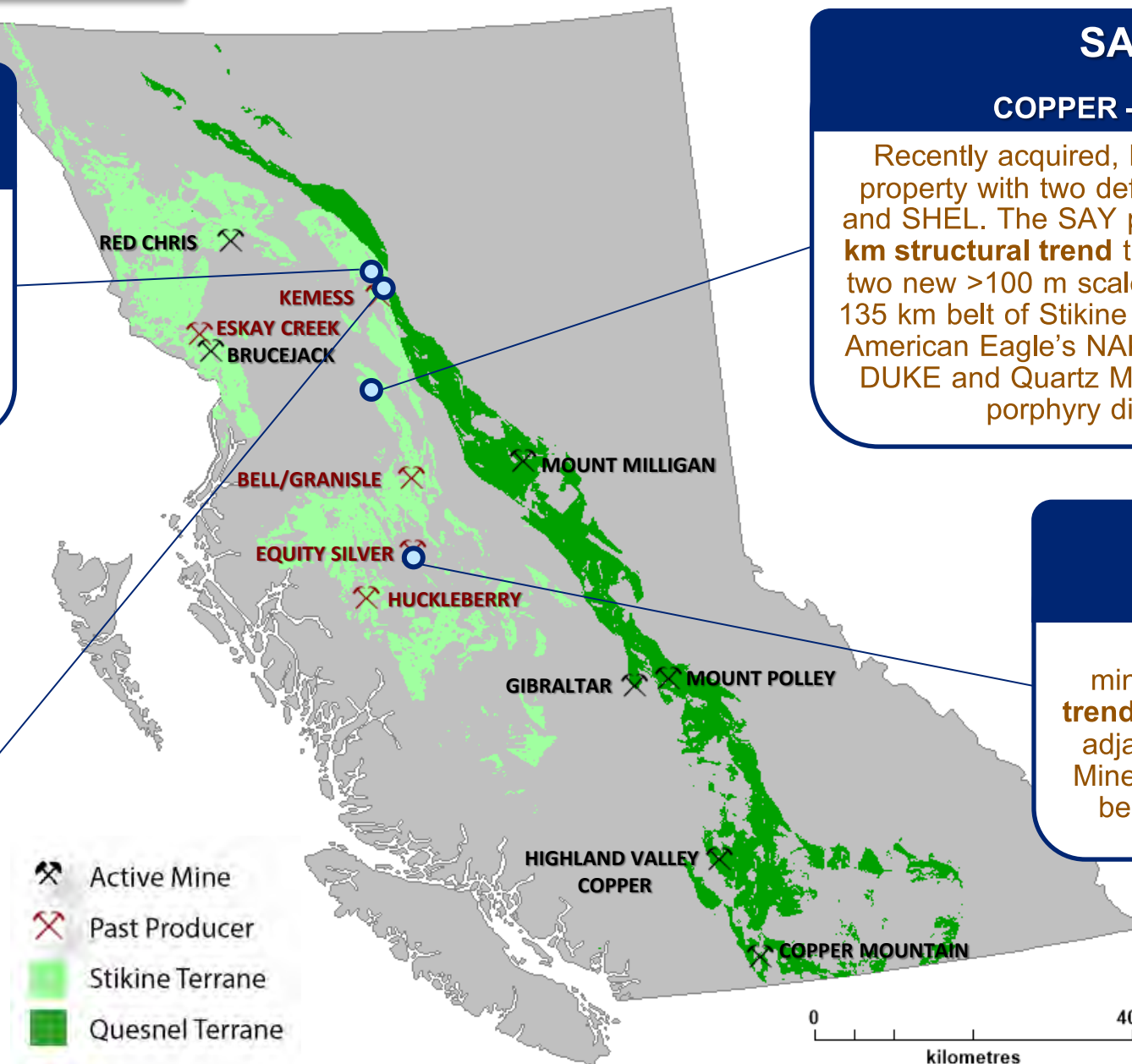
COPPER - SILVER

Recently acquired, **high-grade Cu-Ag** property with two defined targets: SPUR and SHEL. The SAY property covers a **4.3 km structural trend** that is coincident with two new >100 m scale showings. Within a 135 km belt of Stikine Terrane, which hosts American Eagle's NAK, Amarc Resources' DUKE and Quartz Mountain's JAKE Cu-porphyry discoveries.

SILVER HOPE

COPPER - SILVER

Host to Cu-Ag-Au-Mo mineralization along a **2 km trend**, extending south from the adjacent former Equity Silver Mine. The property is ready to begin resource delineation drilling.



HOW IS FINLAY DIFFERENT?



PHOTO: FOUNDERS JOHN J. BARAKSO AND ROBERT BROWN ON THE PIL PROPERTY

Our Properties & Purpose:

- ▶ Quality **copper** +/- silver-gold assets in mining friendly districts of British Columbia, within prospective Stikine Terrane.
- ▶ Finlay has a tight and judicious operating budget with greater than 70% of all funds raised going directly to exploration.

Our History & People:

- ▶ Technical team has **100+ years** of combined exploration, development, mining and corporate experience.
- ▶ Finlay was founded in 1999 by **John J. Barakso** with **Robert F. Brown** and James Tutton.

John J. Barakso was an internationally renowned geochemist who was co-finder of the Kemess South and North deposits in the Toodoggone and the Equity Silver Mine in north central BC. His decades of experience in finding economic deposits in the Toodoggone and in BC, drove his acquisition of the ground surrounding and contiguous to these mines and deposits.

Robert F. Brown, Finlay's President & CEO, co-founded Finlay with John J. Barakso and has over 40 years of experience in mineral exploration specifically around copper porphyry and epithermal gold deposits.

COMPANY SNAPSHOT

TSX-V: FYL | OTCQB: FYMNF

140,111,232	Shares Issued
9,200,000	Options
5,690,049	Warrants
155,001,281	Fully Diluted
\$17,260,000	Market Capitalization

As of February 27, 2025

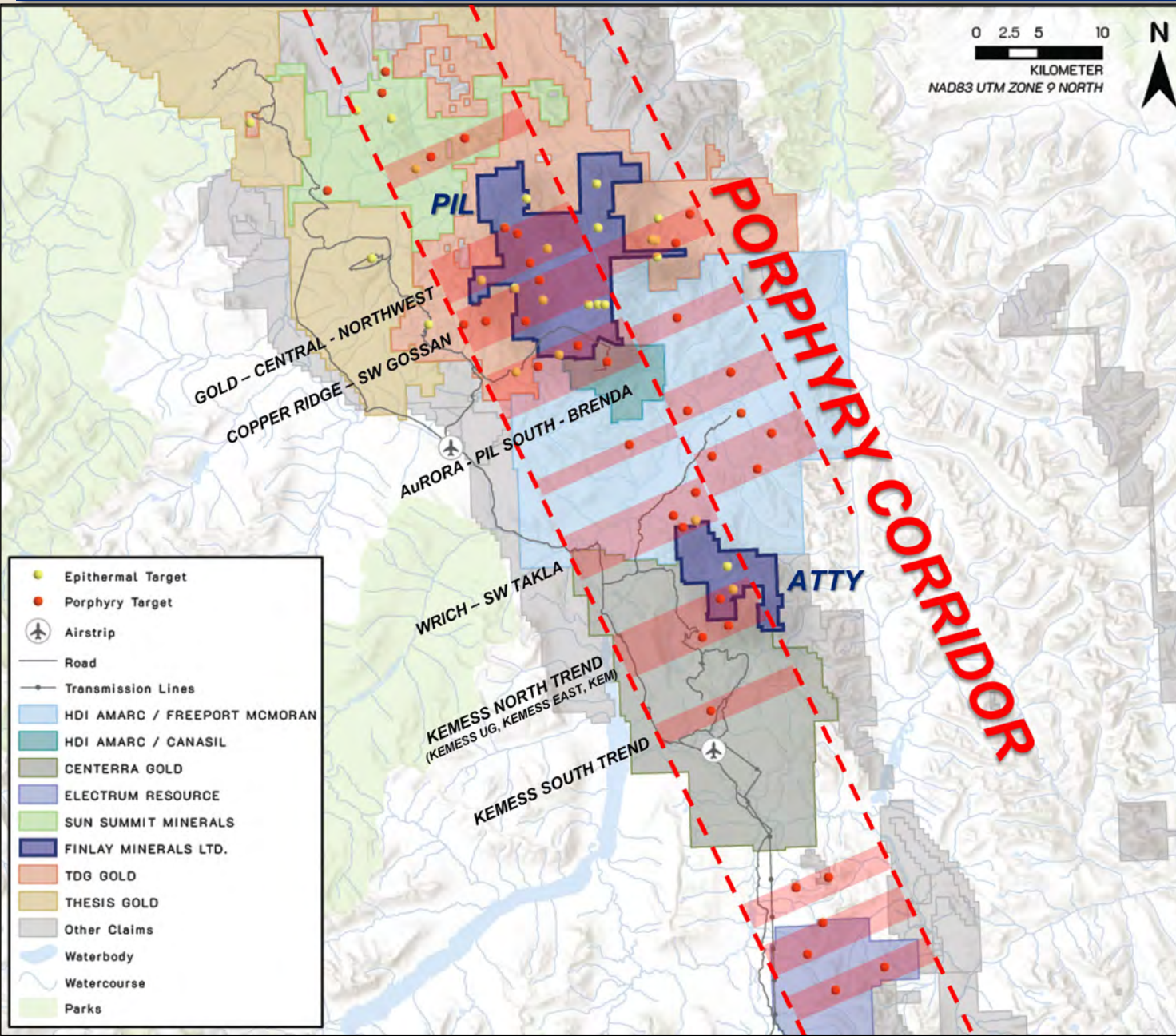
FINLAY MINERALS LTD.

No debt and tightly held share structure with greater than 50% owned by insiders



Amarc Resources
AuRORA Discovery

PIL & ATTY COPPER PORPHYRY CORRIDOR

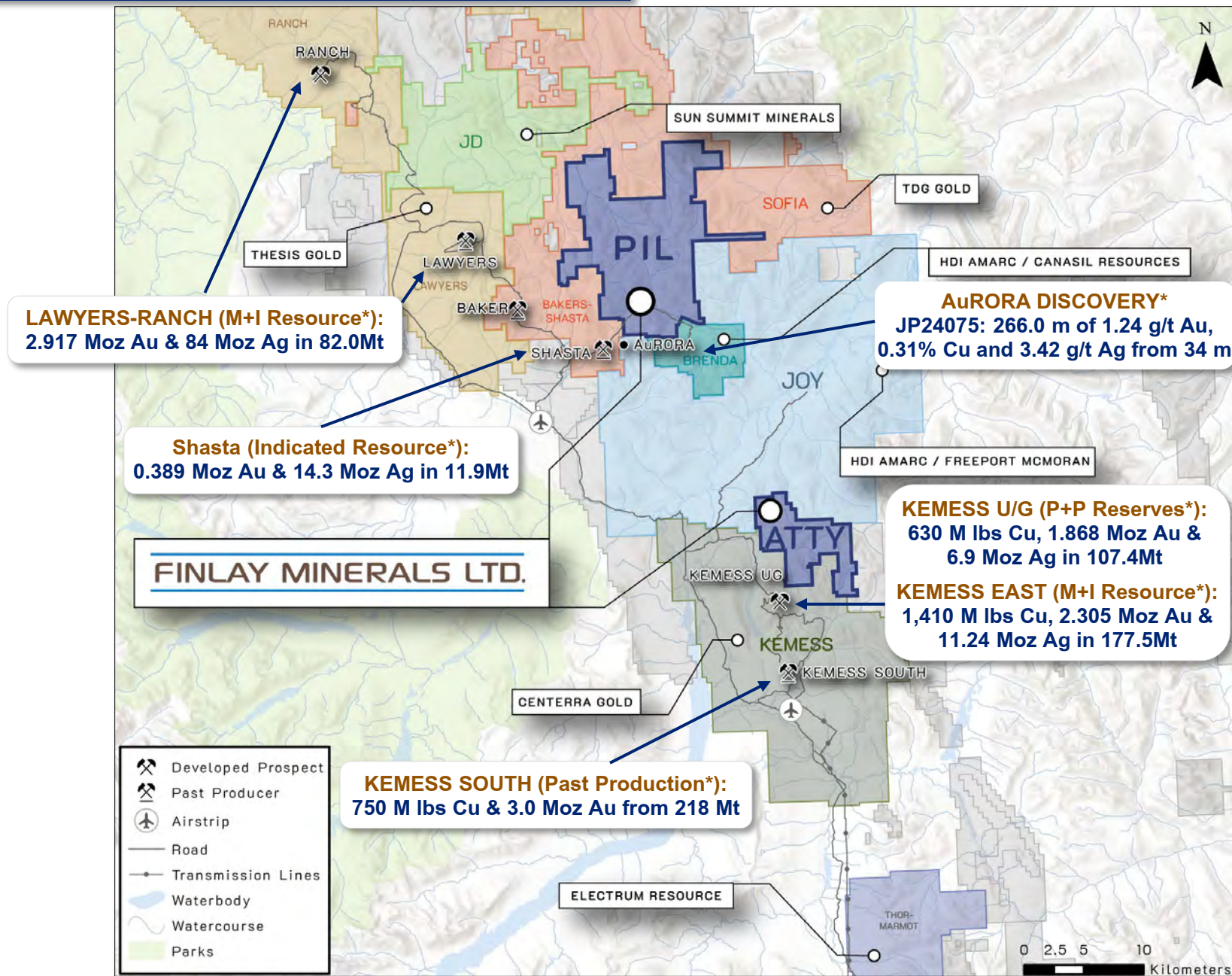


LOCATION LOCATION LOCATION

- ▶ Two 100% owned projects, in the heart of the Toodoggone and neighbouring significant copper porphyry discoveries.
- ▶ PIL & ATTY are permitted and drill ready for the 2025 season.

TOODOGGONE PROPERTIES – PIL & ATTY

- ▶ Finlay Minerals holds a total of **17,249 hectares** within the active, highly prospective, mining friendly Toadoggone District.
- ▶ Two **road accessible** projects, within 20 kilometers of the Sturdee Airstrip.
- ▶ **Notable Cu-Au Porphyry Neighbours:**
 - AuRORA** (Au-Cu-Ag) – Amarc Resources / Freeport-McMoRan
 - Kemess South** (Au-Cu) – Centerra Gold
 - Kemess U/G** (Cu-Au-Ag) – Centerra Gold
- ▶ **Notable Au-Ag Epithermal Neighbours:**
 - Lawyers** (Au-Ag) – Thesis Gold
 - Shasta** (Au-Ag) – TDG Gold



* See appendix for source

PIL HIGHLIGHTS

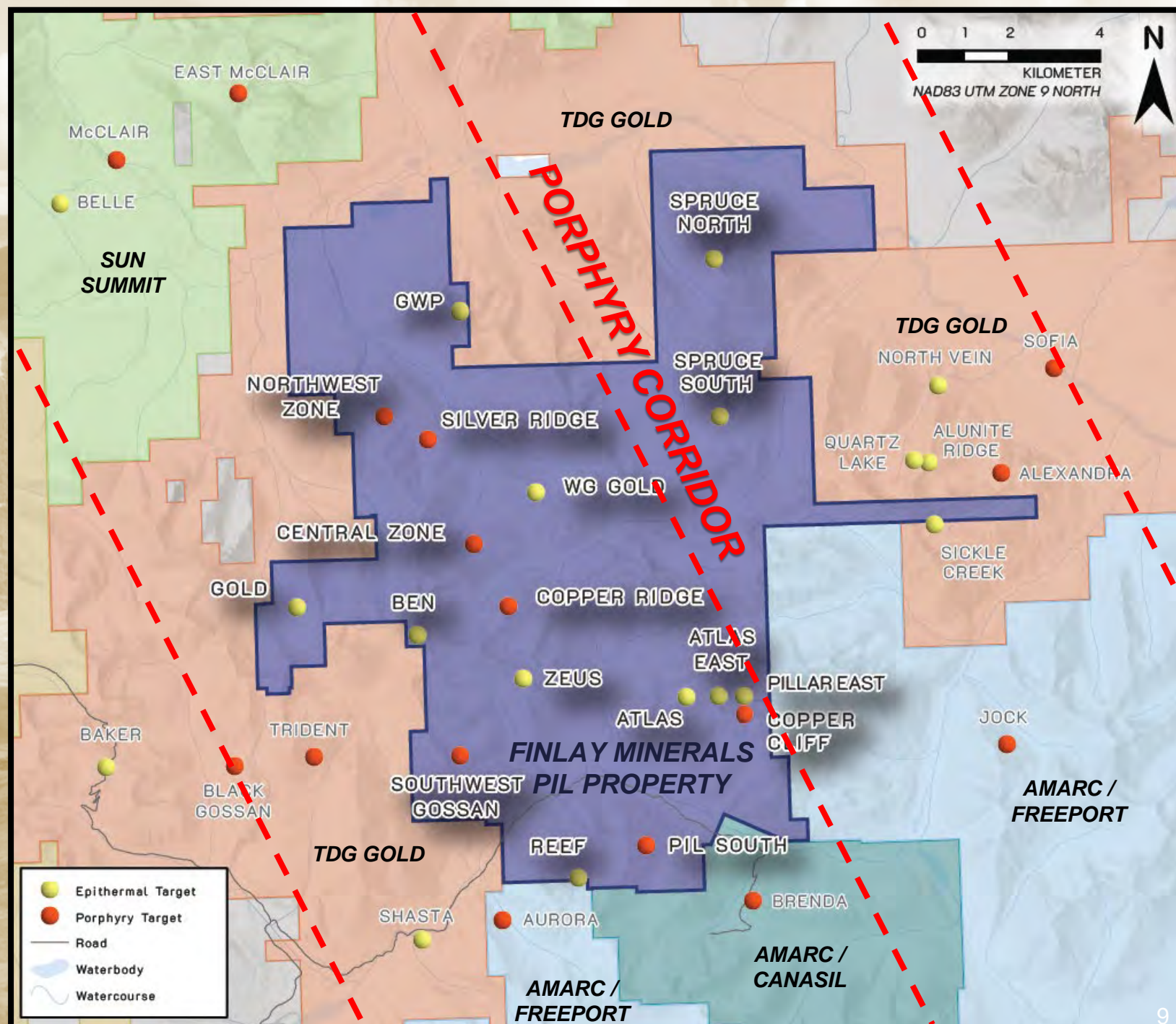
13,374 ha land package.

72 holes collared and 17,026 meters drilled.

Multiple Cu-Au \pm Mo porphyry and epithermal Au-Ag targets.

HDI Amarc and Freeport-McMoRan's AuRORA drill hole JP24075 is located 730 meters south of the PIL claim boundary (266.0 m of 1.24 g/t Au, 0.31% Cu and 3.42 g/t Ag from 34 m*).

* See appendix for source



PIL TARGETS



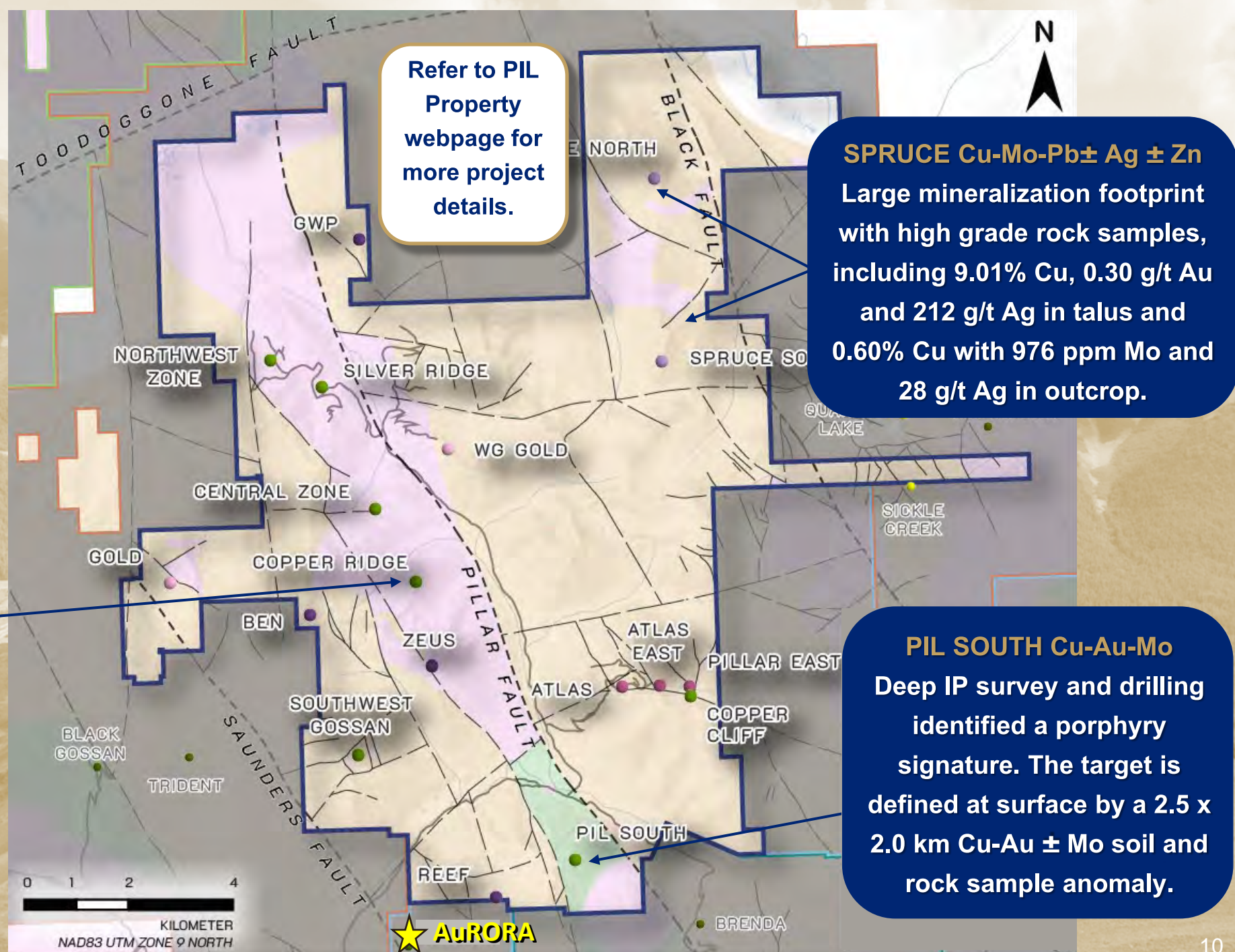
COPPER RIDGE Cu-Au-Ag

Kilometer-scale copper-in-soil anomaly with surface samples assaying 3.44% Cu, 1.12 g/t Au and 210 g/t Ag.

AuRORA DISCOVERY*

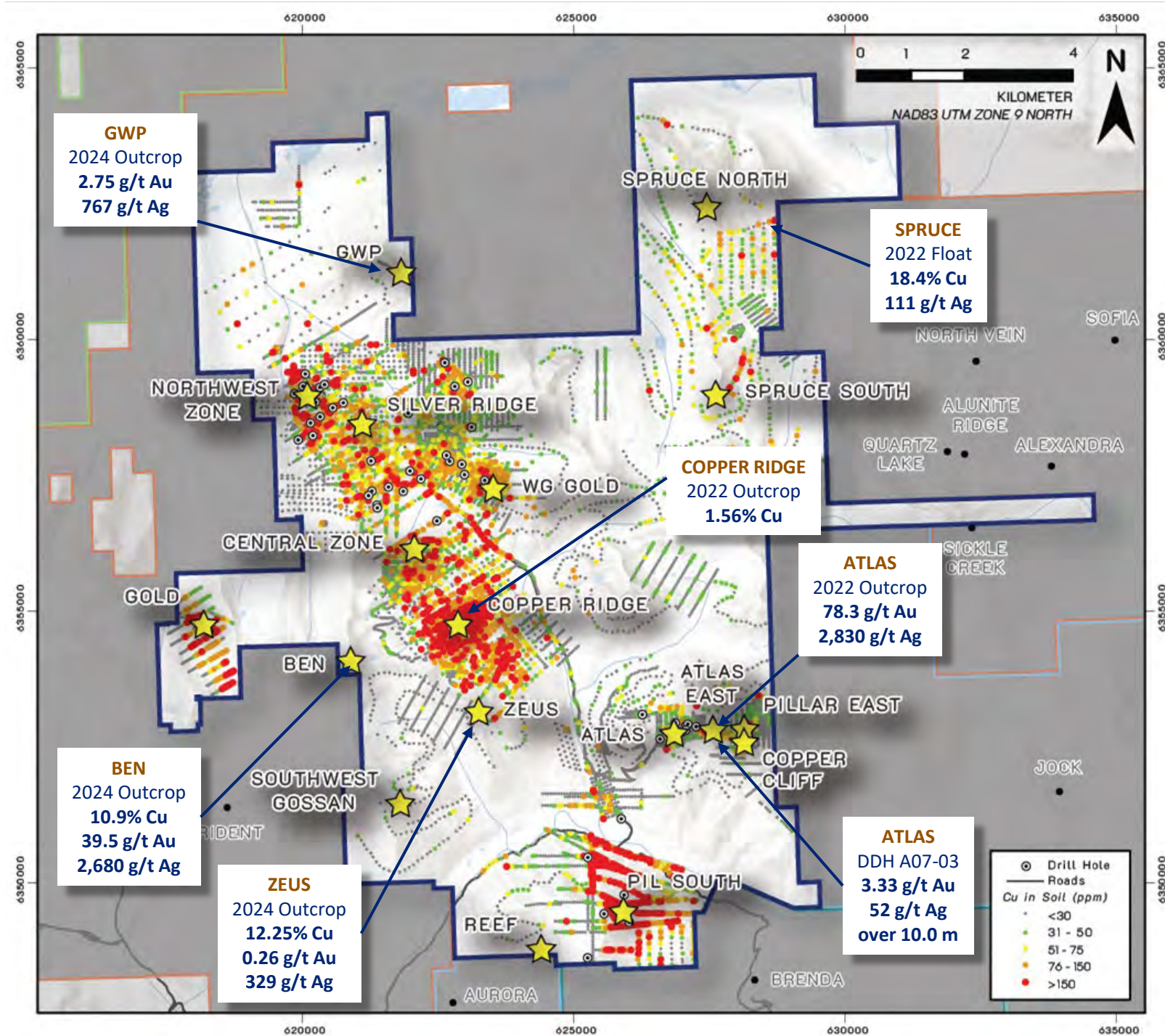
JP24075: 266.0 m of 1.24 g/t Au, 0.31% Cu and 3.42 g/t Ag from 34 m

* See appendix for source



PIL COPPER

- **Kilometer-scale copper-in-soil anomalies** with locally coincident elevated gold and/or molybdenum, in addition to geophysical anomalies (mag and chargeability).
- The **Copper Ridge** Target is **1.9 km x 1.3 km** copper-in-soil anomaly that has **not been drill tested**.
- There has been very limited drilling at the **2.5 km x 2.0 km copper-in-soil anomaly at PIL South**. Results include **162.0 meters of 0.10% Cu, 0.05 g/t Au, 7.0 g/t Ag and 0.18% Zn** from 749.0 meters (PILS-24-006).



ATTY POTENTIAL FOR DISCOVERY

Amarc has outlined a **>3 km chargeability anomaly** at SWT, along the same NW trend as the adjacent WRICH showing.

ATTY is situated along the northwest trend between the Kemess Underground & East deposits and the AuRORA discovery.

KEMESS EAST (M+I Resource*):

1,410 M lbs Cu, 2,305 Moz Au &
11.24 Moz Ag in 177.5Mt

* See appendix for source

KEMESS U/G (P+P Reserves*):

630 M lbs Cu, 1,868 Moz Au &
6.9 Moz Ag in 107.4Mt

* See appendix for source

SWT

17km to AuRORA Discovery

WRICH

Cu-Au-Ag porphyry

HDI AMARC / FREEPORT MCMORAN
JOY PROJECT

Toodoggone District
Northwest porphyry Trend

AWESOME

VALLEY

KEMESS

DEEPS

KEMESS NORTH EXTENSION

ATTYCELLEY

KEM

FOG

KEMESS EAST

KEMESS NORTH TREND

KEMESS UNDERGROUND

NEW MESS

- ▶ **Favourable geology** with setting similar to the Kemess North Trend, which hosts the Kemess Underground and Kemess East Deposits.
- ▶ **8 porphyry & epithermal targets** identified at ATTY.
- ▶ **3,875 hectare land package.**
- ▶ **Permitted** and drill-ready.

■ Porphyry Target

● Epithermal Target

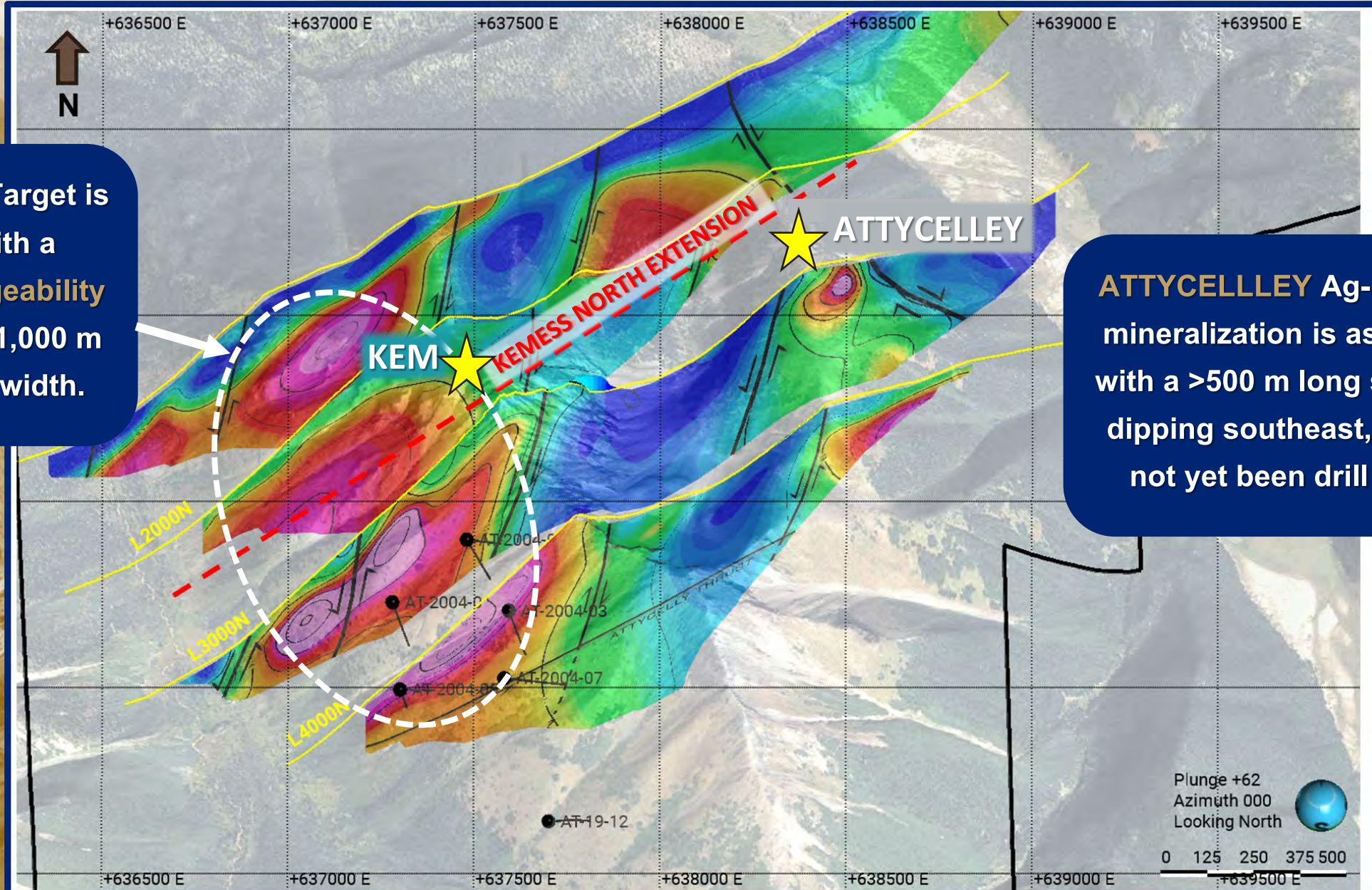
⊙ Drill Collar

0 4
kilometres

ATTY IP LINES AT KEM & ATTYCELLEY

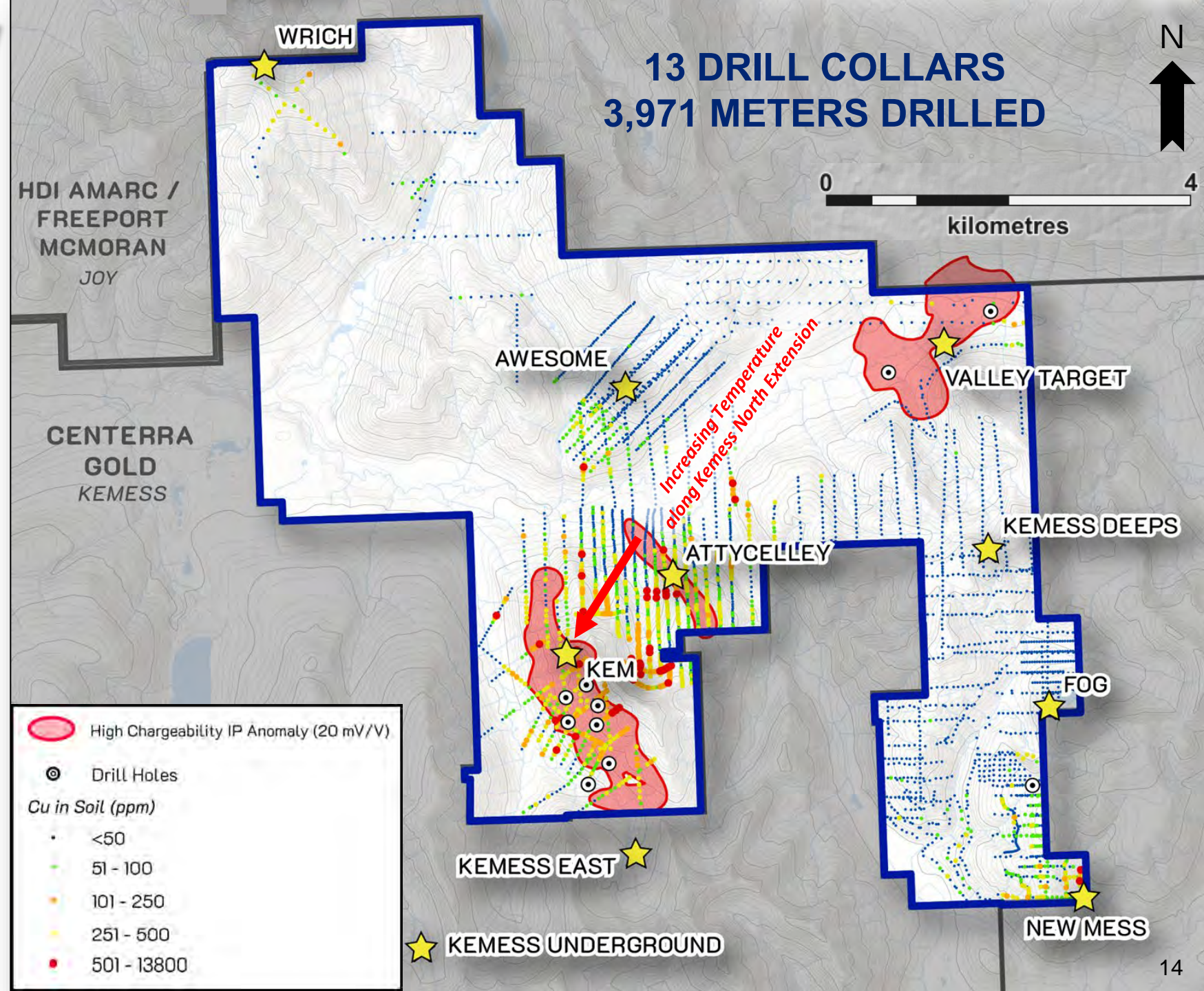
KEM Porphyry Target is coincident with a significant **chargeability anomaly** that is 1,000 m length x 700 m width.

ATTYCELLEY Ag-Pb-Zn-Cu mineralization is associated with a >500 m long structure, dipping southeast, that has not yet been drill tested.

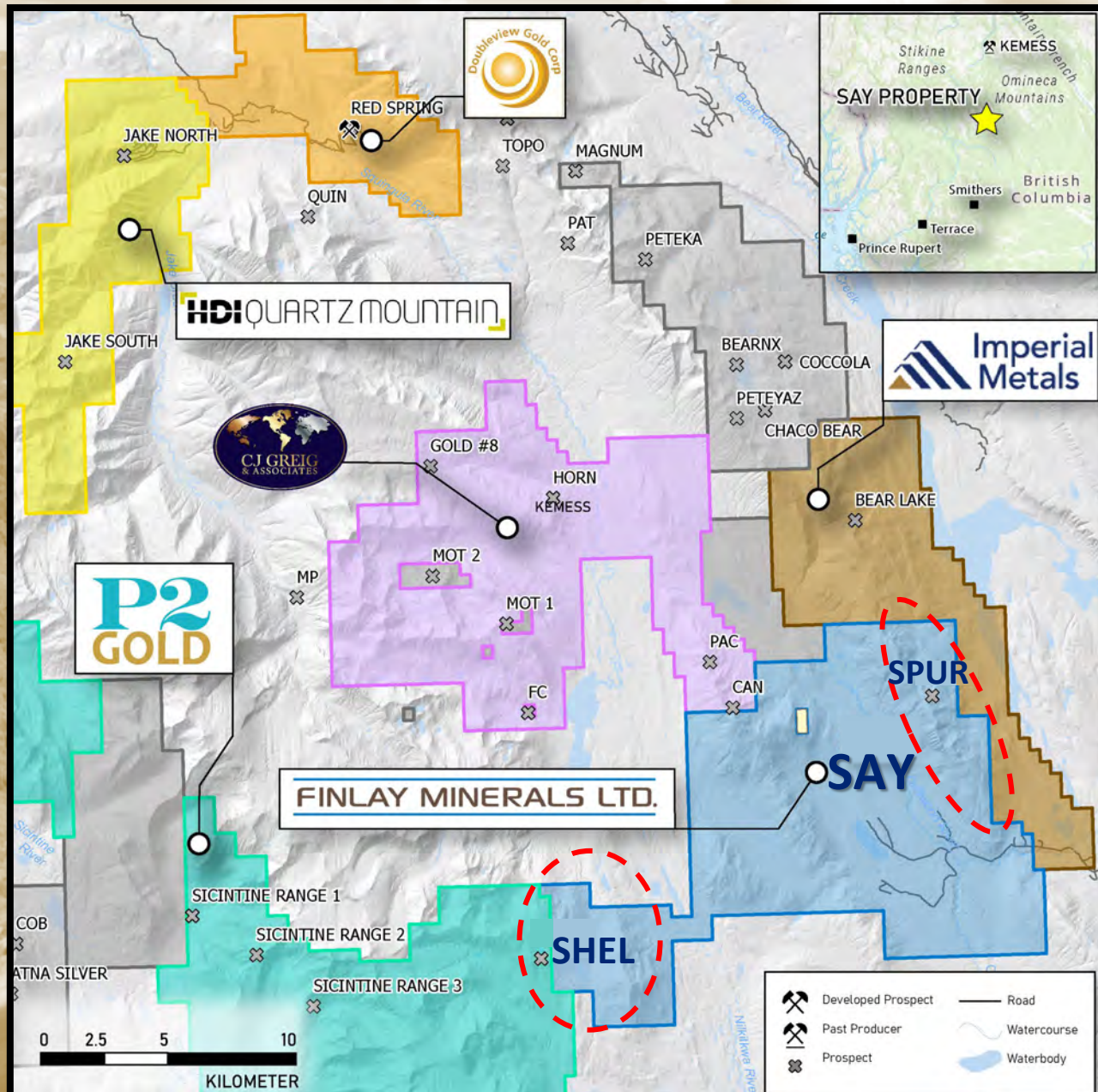


ATTY DRILLING

- ▶ Ten drill holes have been collared at **KEM** to test the **Kemess North Extension** potential.
- ▶ Previous KEM drilling did not drill deep enough to test the underlying IP anomaly. The intersected alteration and lithology at KEM are similar to the upper Kemess East deposit. **Drilling must get >400 meters below the surface to test the Cu-Au-Ag-Mo porphyry potential at KEM.**
- ▶ The presence of **quartz-pyrite ± chalcopyrite** and pyrite-chalcopyrite veining within a **1,000 m x 700 m chargeability anomaly** at depth below KEM indicates the potential for porphyry-style mineralization.



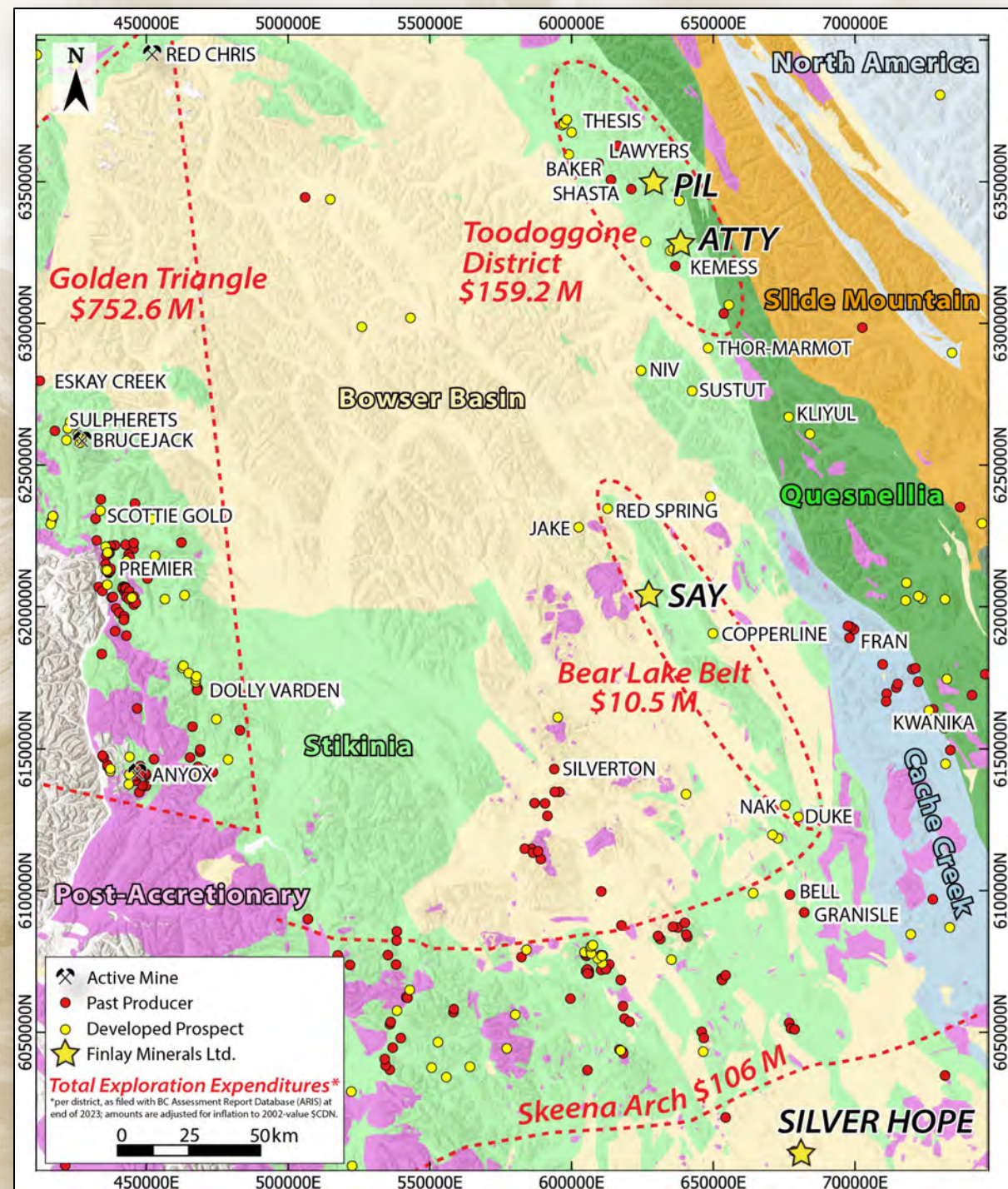
SAY LOCATION



- ▶ 100% owned and encompasses **15,246 hectares**.
- ▶ 140 km north of Smithers with road access to the southeast end of the project.
- ▶ **129 rock samples** collected, **78 have yielded >1% Cu**, 59 have yielded >100 g/t Ag.
- ▶ **SPUR** target hosts bonanza-grade **copper & silver** (>1% Cu & 100 g/t Ag) over **> 4.3 km long ridge-line trend**, including the 200 m x 200 m newly discovered high-grade Cu & Ag AG Zone and the 500 m long East Breccia.
- ▶ **SHEL** target hosts **copper and molybdenum** mineralization intersected in past drilling associated with a large arcuate magnetic anomaly.

SAY TECTONIC SETTING

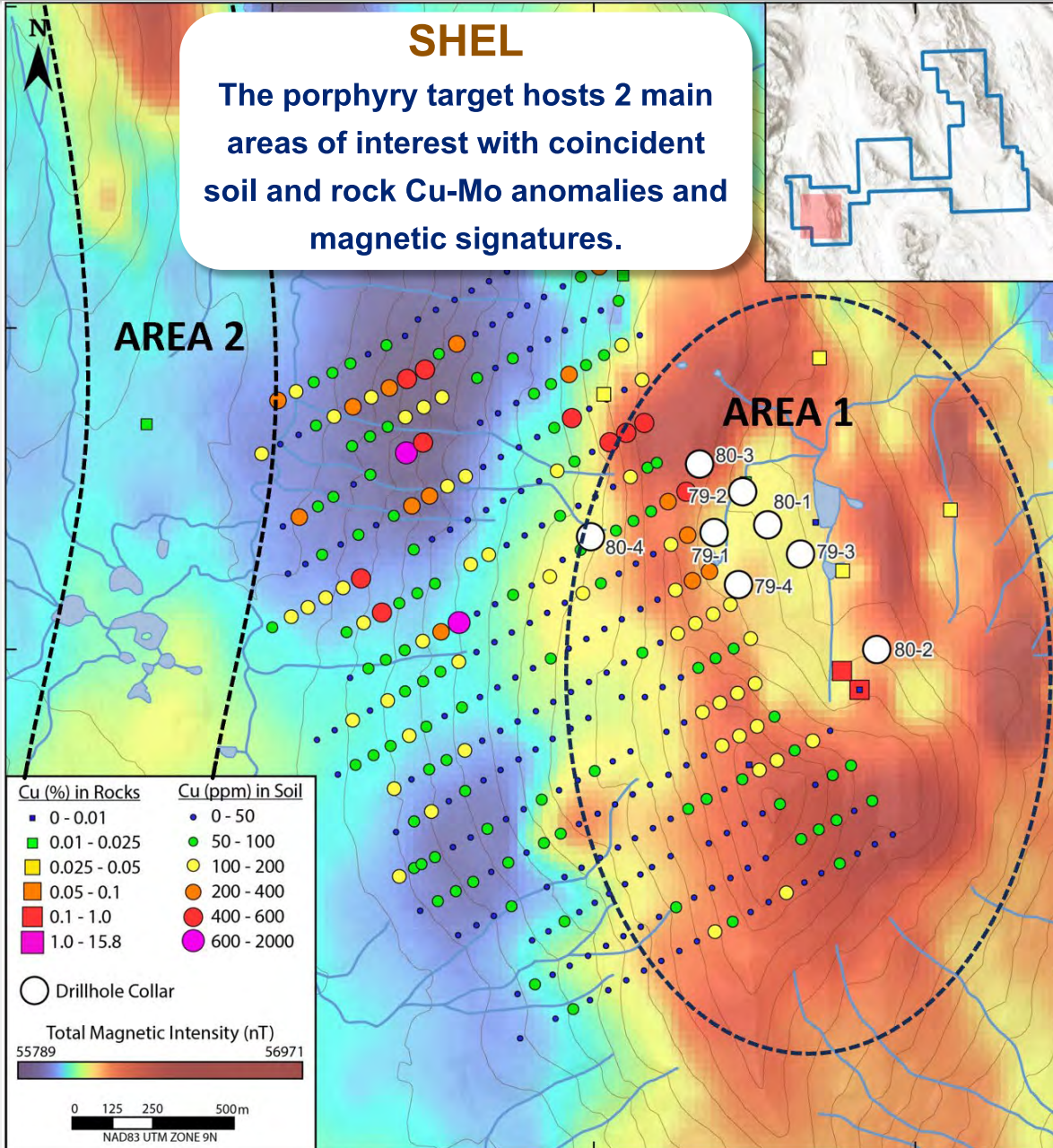
- ▶ Located in an underexplored corridor of the prolific Stikine Terrane, between the Toodoggone District & the Skeena Arch.
- ▶ The Property straddles the western margin of this 135-km-long “Bear Lake Corridor” of Stikine Terrane, a tectonic position analogous to American Eagle Gold’s **NAK** Cu-Au-Mo ± Ag porphyry prospect 90 km to the south.
- ▶ The Bear Lake Corridor includes Amarc Resources and Boliden Minerals Canada’s **DUKE** and HDI Quartz Mountain’s **JAKE** Cu-Mo-Ag-Au porphyry prospects.



SAY SPUR AND SHEL TARGETS

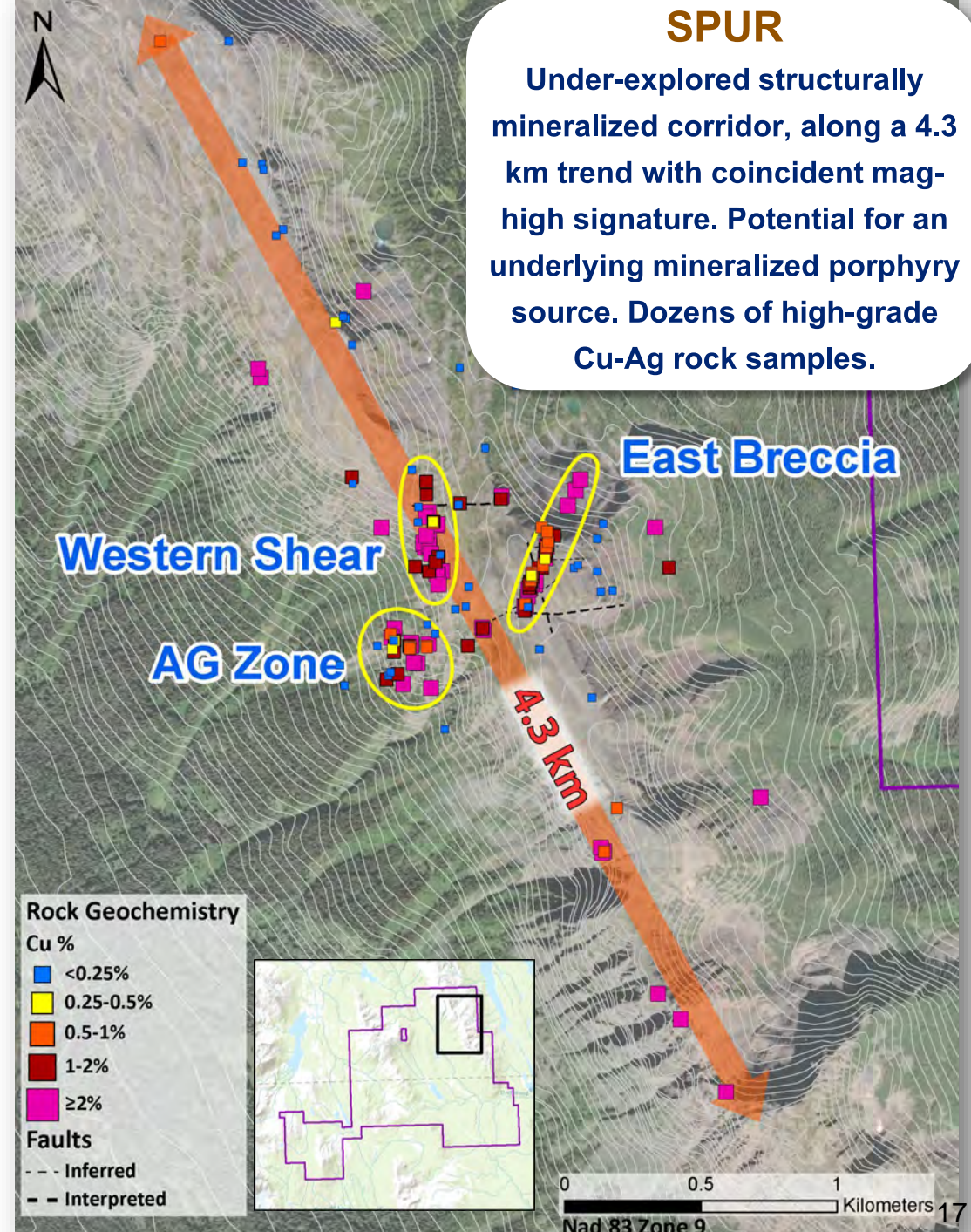
SHEL

The porphyry target hosts 2 main areas of interest with coincident soil and rock Cu-Mo anomalies and magnetic signatures.



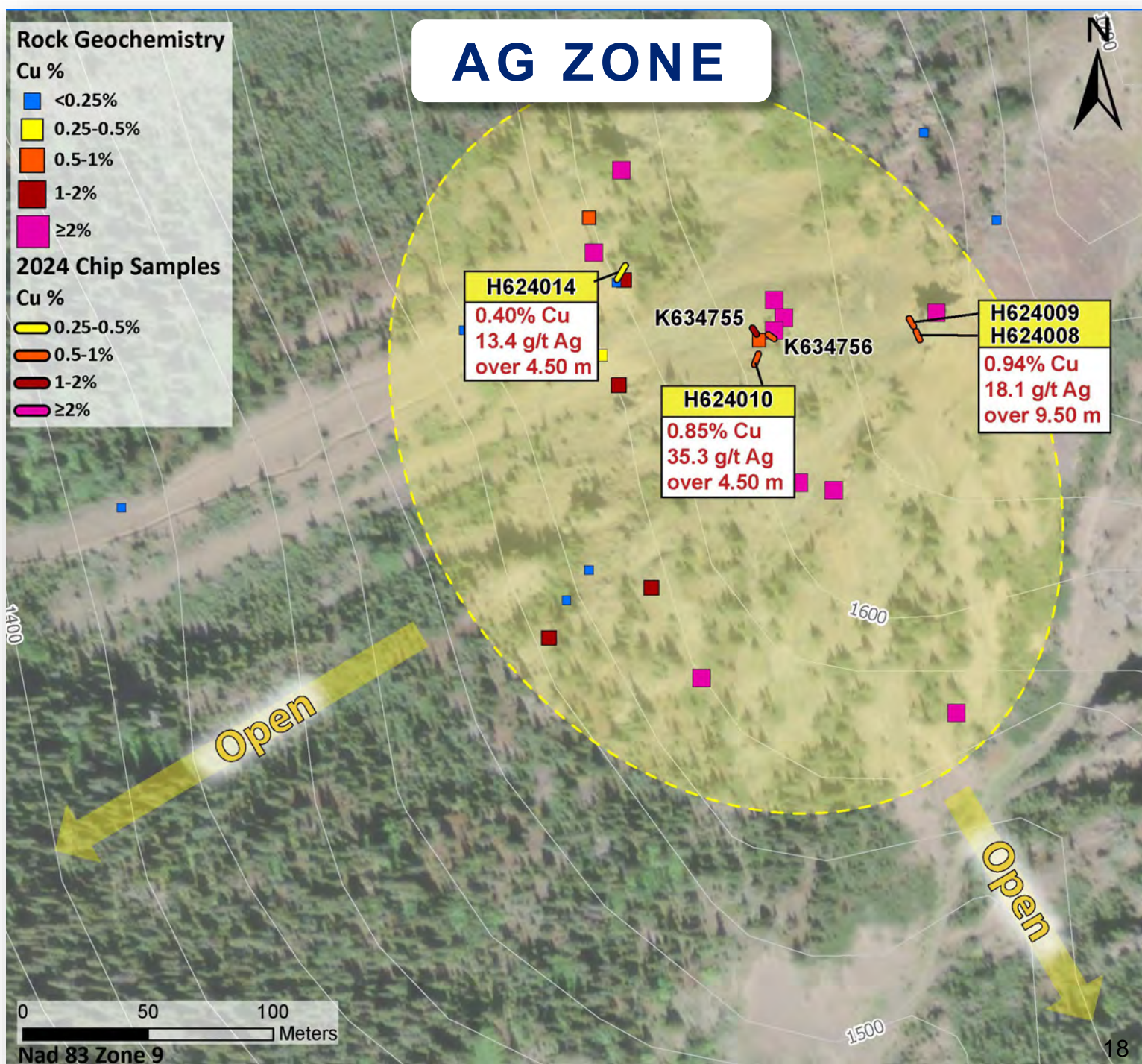
SPUR

Under-explored structurally mineralized corridor, along a 4.3 km trend with coincident mag-high signature. Potential for an underlying mineralized porphyry source. Dozens of high-grade Cu-Ag rock samples.

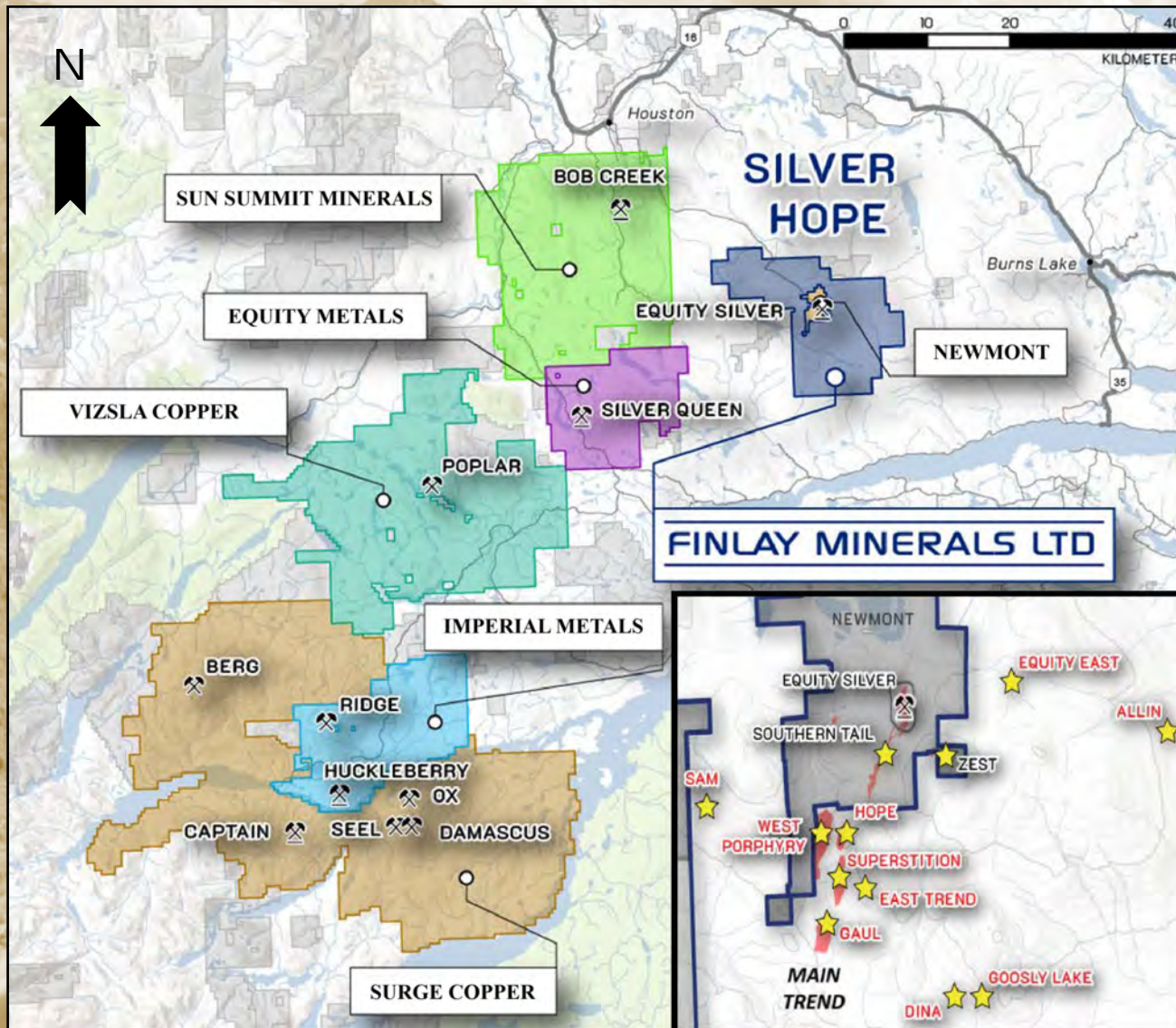


SAY SPUR AG ZONE

- ▶ **200 m x 200 m zone** of intensely fractured and brecciated volcanic rocks hosting mineralized micro-veinlets.
- ▶ 2024 chip sampling results included **9.50 m of 0.94% Cu and 18.1 g/t Ag.**
- ▶ **Bornite-Chalcocite-Chalcopyrite** are the dominant metallic sulphides present.
- ▶ West and southwest of the **AG Zone** is **open** with limited to no outcrop exposure in the surrounding area.
- ▶ **A 4 km x 4 km elliptical magnetic high** surrounding a magnetic low is located southwest and west of the SPUR target area and represents a priority target.



SILVER HOPE LOCATION & INFRASTRUCTURE



Positioned in a highly prospective area with producing and past-producing mines as well as brownfields exploration projects as neighbours.

- ▶ 100% owned, **21,322 hectare** property surrounding the former Equity Silver Mine.
- ▶ **Year-round access** from Houston, BC (38 km north).
- ▶ **Permitted** and ready for grassroot target and resource-definition drilling.
- ▶ 179 holes collared totalling **41,041 meters drilled** on the property.
- ▶ **Main Trend** is a Cu-Ag-Au > 2 km mineralized zone that remains open at depth and to the south.

SILVER HOPE TARGETS

EQUITY SILVER MINE PRODUCTION

71.36 M oz Ag, 0.508 M oz Au,
and 185 Mlbs Cu from 33.8Mt*

* See appendix for source

EQUITY EAST

Drilling in 2022 intersected anomalous Cu-Ag-Pb-Zn mineralization distal to the target.

SAM

Hosts significant historic drilling with broad Zn-Ag intercepts and high-grade intervals.

WEST PORPHYRY

>1 km long Cu-Mo porphyry zone due west of the Main Trend hosting significant Cu-Ag-Mo mineralization potential.

EAST TREND

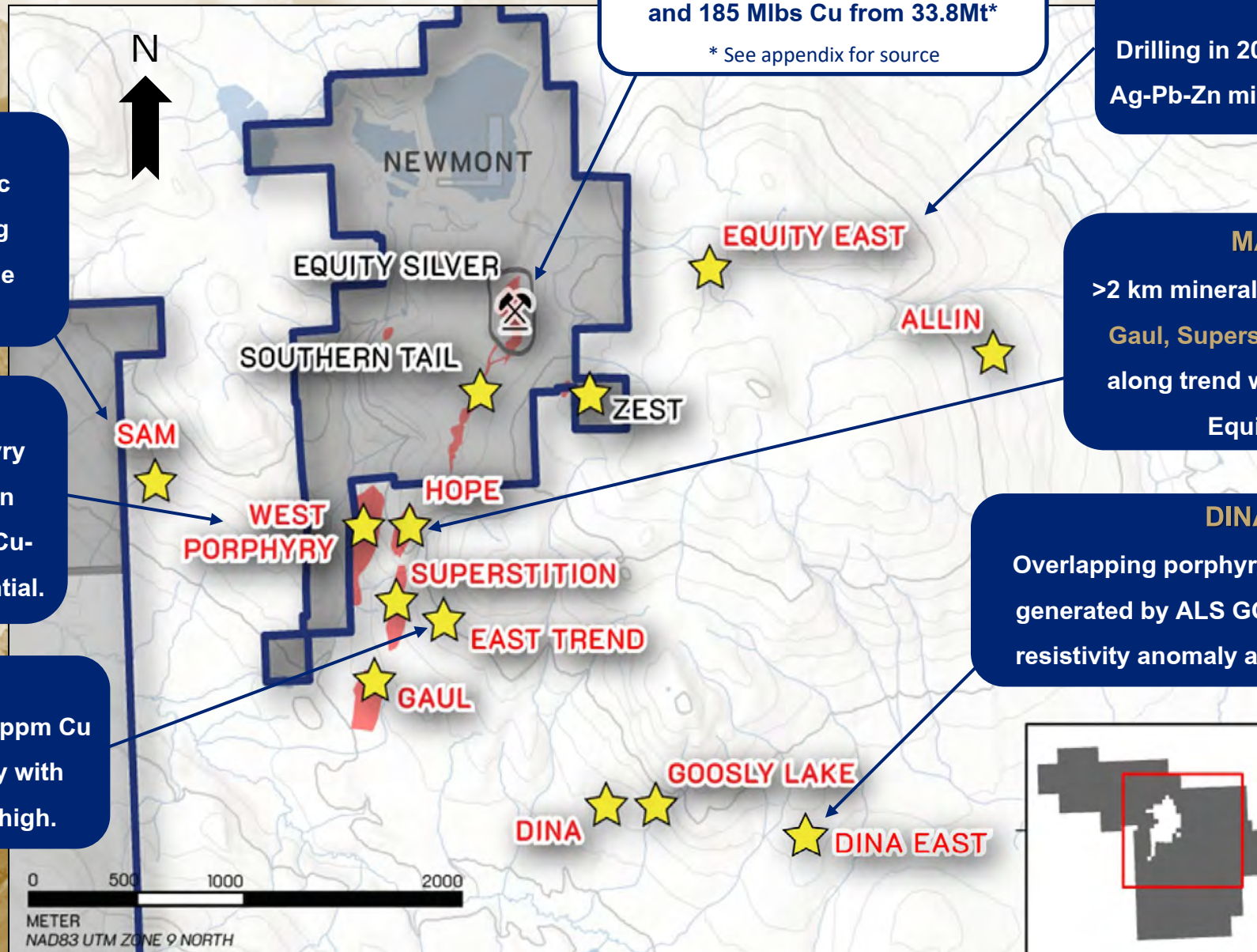
600 m x 800 m area of >100 ppm Cu soil geochemical anomaly with coincident chargeability high.

MAIN TREND

>2 km mineralized trend that hosts the Gaul, Superstition and Hope Zones, along trend with the past-producing Equity Silver Mine.

DINA EAST

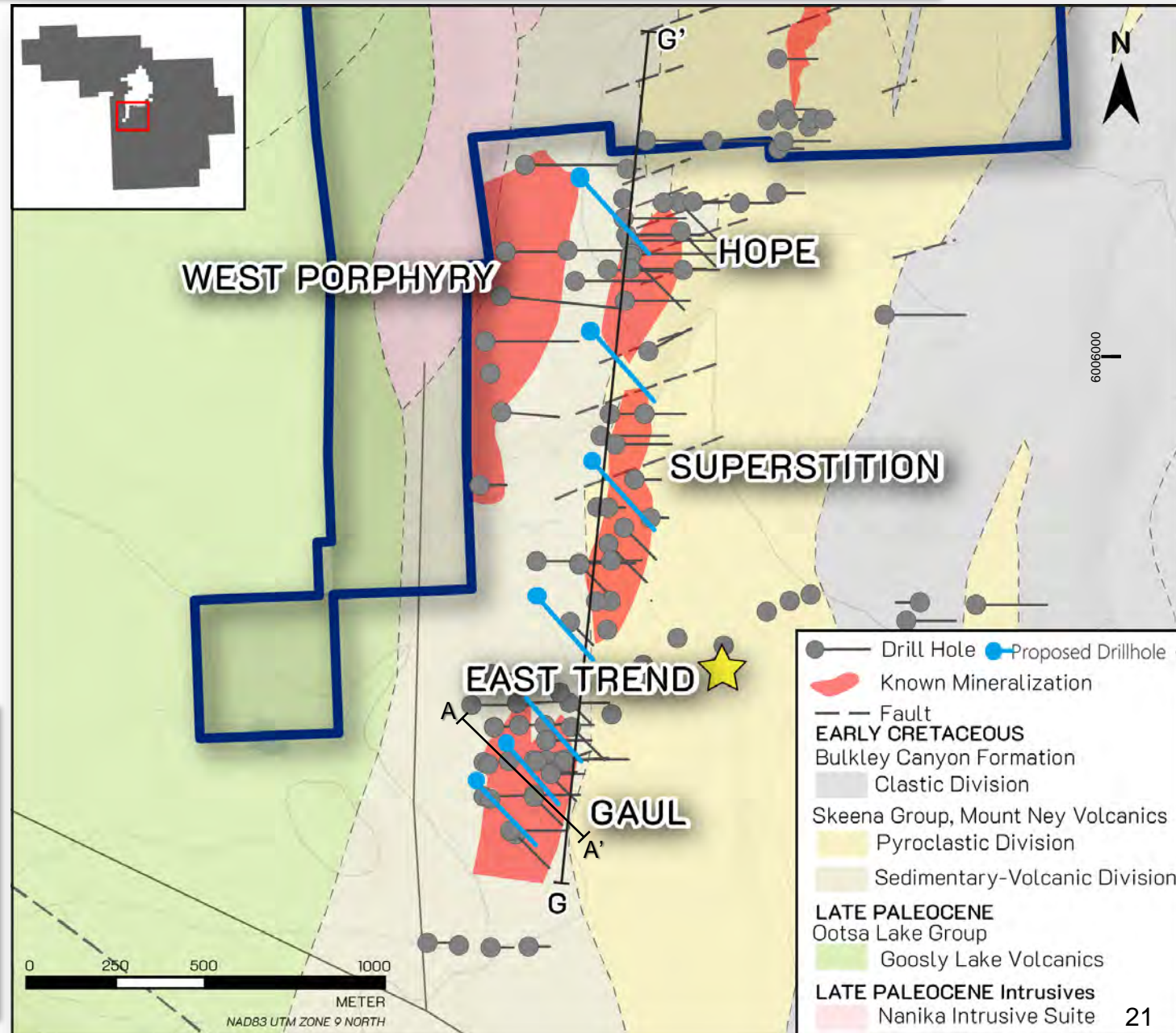
Overlapping porphyry and polymetallic target generated by ALS GOLDSPOT with a CSAMT resistivity anomaly at depth below the target.



SILVER HOPE MAIN TREND & WEST CU-MO PORPHYRY

GOAL: Drilling at The Main Trend Cu-Ag-Au and West Porphyry Cu-Mo to Determine Resource Potential

- ▶ **Main Trend Drilling Cu-Ag-Au (Gaul, Superstition and Hope):** Test historic drill areas at Gaul that were only selectively sampled and assayed. Test for continuity between the three zones.
- ▶ **West Porphyry Drilling Cu-Mo:** Infill within the 1 km mineralized trend of consistent grade and test for continuity along the Equity Silver-Newmont boundary.



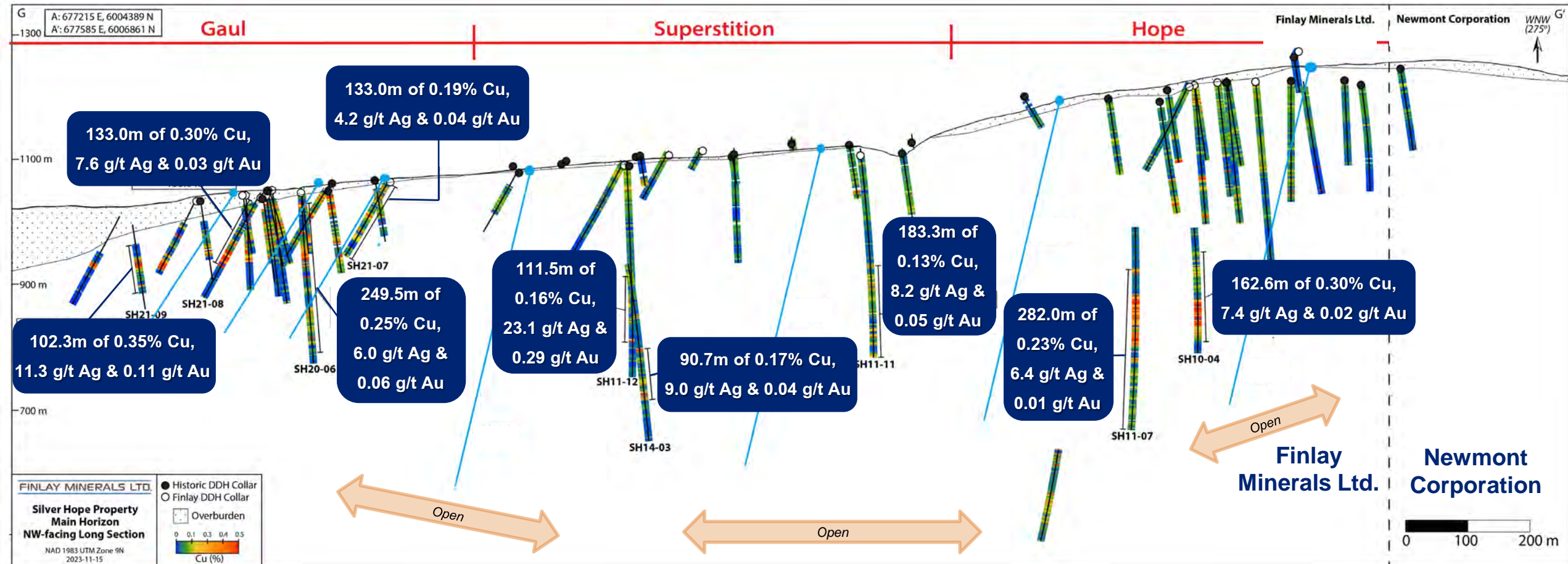
GAUL ZONE

SH21-09: 1.23 m of 1.27% Cu, 74.5 g/t Ag and 1.88 g/t Au at 82.1 m

SILVER HOPE MAIN TREND CROSS-SECTION VIEW WESTERLY

G

G'



2 kilometers

Proposed
drill hole

FINLAY INVESTMENT HIGHLIGHTS



- ▶ **Finlay has 4 geologically exceptional properties: the ATTY & PIL properties are central to the porphyry corridor of the Toodoggone District – an area of intense exploration activity, the Silver Hope hosts the advanced Cu-Ag Main Trend ready for resource definition drilling, and the high-grade Cu-Ag SAY property has multiple porphyry potential.**
- ▶ **Finlay has an experienced Board of Directors and Management with large share positions.**
- ▶ **Finlay is a prudently managed exploration company with greater than 70% of all funds raised going directly to exploration.**
- ▶ **Finlay is committed to good relationships with local First Nations and other stakeholders.**
- ▶ **Finlay's value is in its property assets; it is undervalued and an investment opportunity.**

FINLAY MINERALS LTD.

TSX-V: FYL | OTCQB: FYMNF

AT OUR CORE: EXCEPTIONAL ASSETS + TECHNICAL EXCELLENCE = ROAD TO DISCOVERY

ROBERT F. BROWN

President, CEO and Director

604.816.7043 | rbrown@finlayminerals.com

ILONA B. LINDSAY

Vice President, Corporate Relations and Director

778.384.5706 | iblindsay@finlayminerals.com



APPENDIX SLIDES

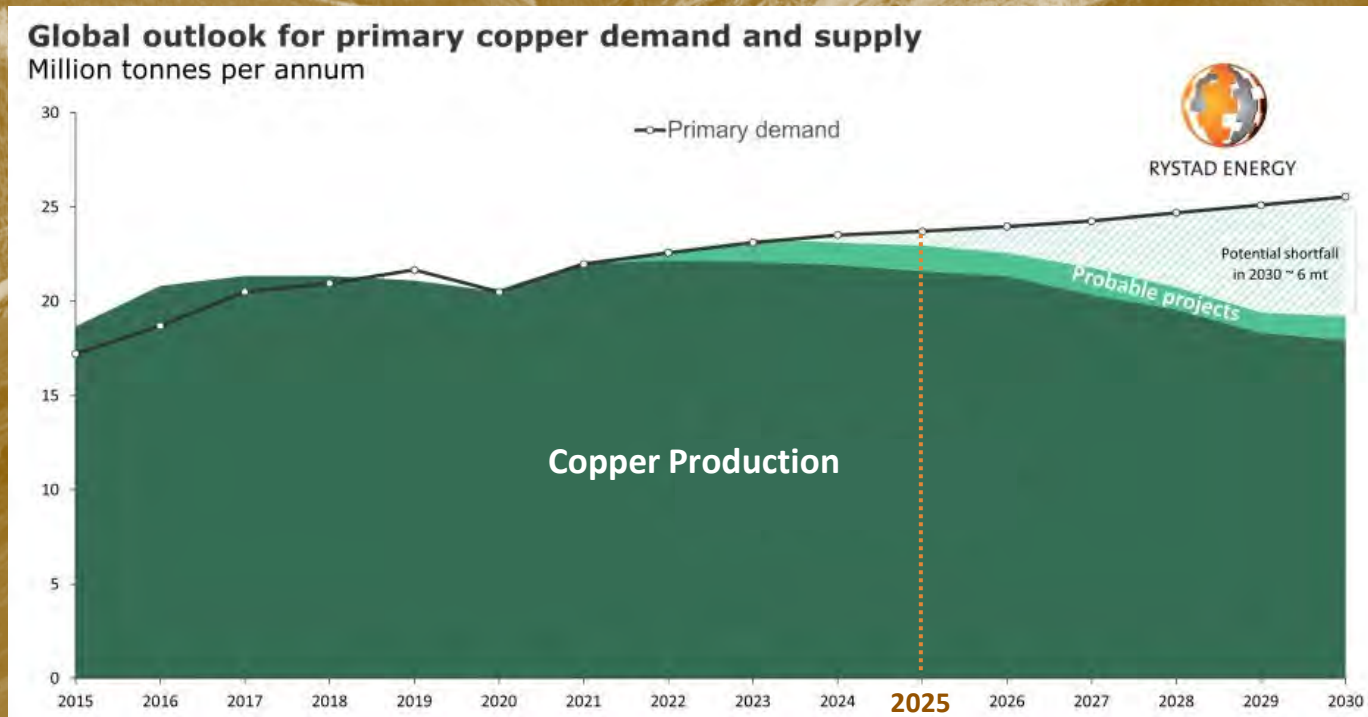
COPPER (Cu)

*“The global transition to low-carbon energy is dependent upon metals and a significant uptake in metal production, with **COPPER** arguably the most **important metal** embedded into virtually every piece of low-carbon energy technology, from wind turbines, to solar panels to electric cars.”*

DAVID LAWIE Chief Geoscientist & Chief Technologist for IMDEX, Presenting at the Mineral Deposit Research Unit (MDRU), UBC, February 2023.

*“We estimate the **COPPER** used in data centres globally will grow **six-fold by 2050** – from around half a million tonnes a year of copper today, to around 3 million tonnes a year by 2050. That uplift is roughly equivalent to the combined annual output of the world's four largest copper mines today.”*

BHP BHP-Insights, Why AI tools and data centres are driving copper demand, January 2025.



Source: Rystad Energy research and analysis, Western Copper and Gold, IWCC, IEA

THE FINLAY TEAM

ROBERT F. BROWN

President, CEO and Director

Former Vice President, Exploration for Great Panther Mining Ltd. and former geologist with LAC Minerals.

GORD STEBLIN, B.COMM., CPA, CGA

CFO

Has over 30 years of experience in the mining/exploration sector and serves as CFO of 3 other companies in the sector.

WADE BARNES, B.Sc. – GEOLOGY, P. GEO., Q.P.

Vice President, Exploration

Over 20 years geology experience and a Qualified Person (QP) as defined by National Instrument 43-101. Co-received the H.H. “Spud” Huestis Award from AMEBC in 2016 for excellence in Prospecting and Mineral Exploration for the discovery of the Kemess East deposit.

ILONA BARAKSO LINDSAY, B.Sc.

Vice President, Corporate Relations and Director

Responsible for corporate administration and tenure management. Ms. Lindsay is a director of the Barakso family companies.

DAVID A. SCHWARTZ, B. COMM., J.D.

Secretary and Director

Retired Barrister, Solicitor, Arbitrator and Notary in corporate and securities law predominantly with junior natural resource companies.

ALVIN JACKSON, B.Sc.

Independent Director

Vice President, Exploration and Development & Director of Freegold Ventures. Former President & CEO/COO of Eurozinc Mining Corporation.

KRISTINA WALCOTT

Independent Director

President and CEO of Freegold Ventures Limited since 2009, and a director since 2010.

DR. JOHN A. BARAKSO, DMD

Director

Retired from dentistry after 29 years. Dr. Barakso is a director of the Barakso family companies.

FINLAY MINERALS LTD.

TSX-V: FYL | OTCQB: FYMNF

For further information on Finlay Mineral's Properties, please refer to our Technical Presentations & Property Pages:

[PIL Web Page](#)

[ATTY Technical Presentation](#)

[SAY Technical Presentation](#)

[Silver Hope Technical Presentation](#)

SOURCES

HDI Amarc AuRORA Discovery Drill Results:

<https://amarcrestresources.com/news-releases/amarc-announces-additional-drill-results-from-the-aurora-copper-gold-silver-deposit-discovery-in-collaboration-with-freeport-at/>

Kemess South Past Production:

<https://www.centerragold.com/operations/kemess-project/kemess-east/>

Kemess East Measured & Indicated Resource Estimate:

<https://www.centerragold.com/operations/kemess-project/reserves-and-resources/>

Kemess Underground Proven & Probable Reserves:

<https://www.centerragold.com/operations/kemess-project/reserves-and-resources/>

Lawyers-Ranch Project Measured & Indicated Resource Estimate:

<https://thesisgold.com/ranch-lawyers-project-pea/>

Shasta Project Indicated Resource Estimate:

<https://tdggold.com/news-2/2025-03/20250108-02/>

Equity Silver Mine Historic Production from BC MINFILE:

<https://minfile.gov.bc.ca/summary.aspx?minfilno=093l++001>