

# FINLAY MINERALS LTD.

TSX-V: FYL | OTCQB: FYMNF

## SILVER HOPE PROPERTY

*Technical Presentation*

MARCH 2023





# CAUTIONARY & FORWARD-LOOKING INFORMATION

*This presentation includes certain “forward-looking information” and “forward-looking statements” (collectively, “forward-looking statements”) within the meaning of applicable Canadian securities legislation. All statements in this presentation that address events or developments that we expect to occur in the future are forward-looking statements. Forward-looking statements are statements that are not historical facts and are generally, although not always, identified by words such as “expect”, “plan”, “anticipate”, “project”, “target”, “potential”, “schedule”, “forecast”, “budget”, “estimate”, “intend” or “believe” and similar expressions or their negative connotations, or that events or conditions “will”, “would”, “may”, “could”, “should” or “might” occur. All such forward-looking statements are based on the opinions and estimates of management as of the date such statements are made. Forward-looking statements in this presentation include statements regarding, among others, the exploration plans for the Company’s properties. Although Finlay believes the expectations expressed in such forward-looking statements are based on reasonable assumptions, such statements are not guarantees of future performance and actual results or developments may differ materially from those forward-looking statements. Factors that could cause actual results to differ materially from those in forward-looking statements include market prices, exploration successes, and continued availability of capital and financing and general economic, market or business conditions. These forward-looking statements are based on a number of assumptions including, among other things, assumptions regarding general business and economic conditions, the timing and receipt of regulatory and governmental approvals, the ability of Finlay and other parties to satisfy stock exchange and other regulatory requirements in a timely manner, the availability of financing for Finlay’s proposed transactions and programs on reasonable terms, and the ability of third-party service providers to deliver services in a timely manner. Investors are cautioned that any such statements are not guarantees of future performance and actual results or developments may differ materially from those projected in the forward-looking statements. Finlay does not assume any obligation to update or revise its forward-looking statements, whether as a result of new information, future or otherwise, except as required by applicable law.*

*Wade Barnes, P. Geo., is the Vice President, Exploration and Qualified Person for Finlay Minerals Ltd. He has reviewed the technical aspects of this presentation.*



# THE FINLAY TEAM

## **ROBERT F. BROWN, P. ENG.**

### *President, CEO and Director*

Former Vice President, Exploration for Great Panther Mining Ltd. and former geologist with LAC Minerals

## **ILONA BARAKSO LINDSAY, B.Sc.**

### *Vice President Corporate Relations, Interim CFO and Director*

Responsible for corporate administration and tenure management. Ms. Lindsay is a director of the Barakso family companies.

## **WADE BARNES, B.Sc. – GEOLOGY, P. GEO., Q.P.**

### *Vice President, Exploration*

Consulting geologist with Tripoint Geological Services and a Qualified Person (QP) as defined by National Instrument 43-101. Co-received the H.H. "Spud" Huestis Award from AMEBC in 2016 for excellence in Prospecting and Mineral Exploration.

## **DAVID A. SCHWARTZ, B. COMM., J.D.**

### *Secretary and Director*

Retired Barrister, Solicitor, Arbitrator and Notary in corporate and securities law predominantly with junior natural resource companies.



## **ALVIN JACKSON, B.Sc.**

### *Independent Director*

Vice President, Exploration and Development & Director of Freegold Ventures. Former President & CEO/COO of Eurozinc Mining Corporation.

## **DR. JOHN A. BARAKSO, DMD**

### *Director*

Retired from dentistry after 29 years. Dr. Barakso is a director of the Barakso family companies.

## **KRISTINA WALCOTT**

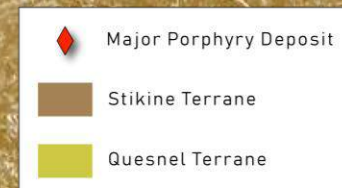
### *Independent Director*

President and CEO of Freegold Ventures Limited since 2009, and a director since 2010.



Targeting Equity-Style Ag-Cu-Au and Porphyry Cu-Au-Mo mineralization over 21,690 Ha with only 17% ground-truthed and 2% of the property drill tested.

- ▶ Adjacent to the past-producing *Equity Silver Mine* and 20 km south-southeast of Houston with *year-round road access*.
- ▶ Targets include: the Main Trend, West Horizon Cu-Mo QMZ, Equity East, Allin, and Sam Zones.
- ▶ *The Main Trend* is *>2 km of Cu-Ag-Au mineralization* 1.5 km south of the past-producing Equity Silver Mine and is *open to the south*.
- ▶ The *West Horizon Cu-Mo QMZ porphyry* is a *1 km zone* due west of the Main Trend and hosts significant Cu-Ag-Mo mineralization potential.

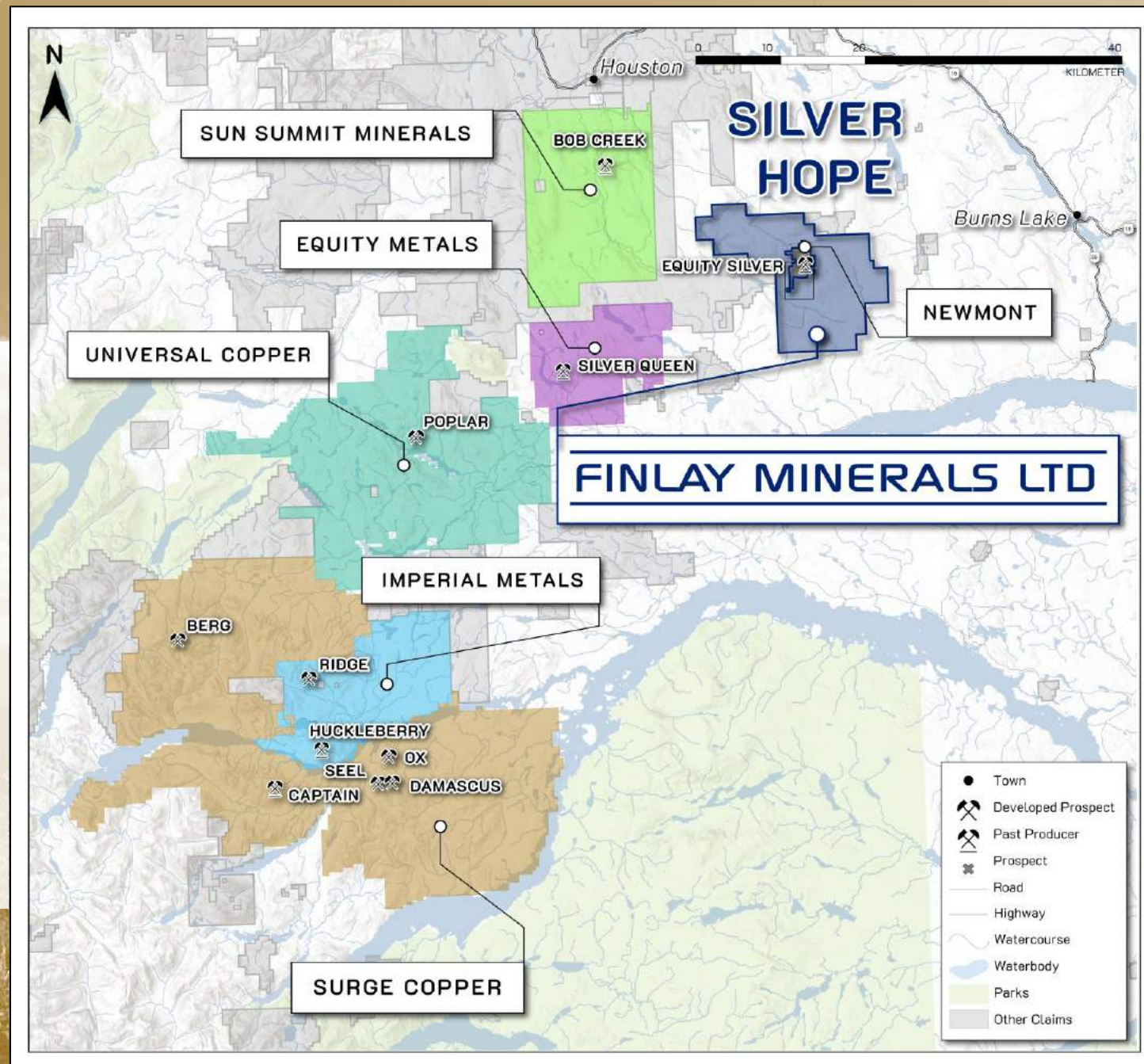




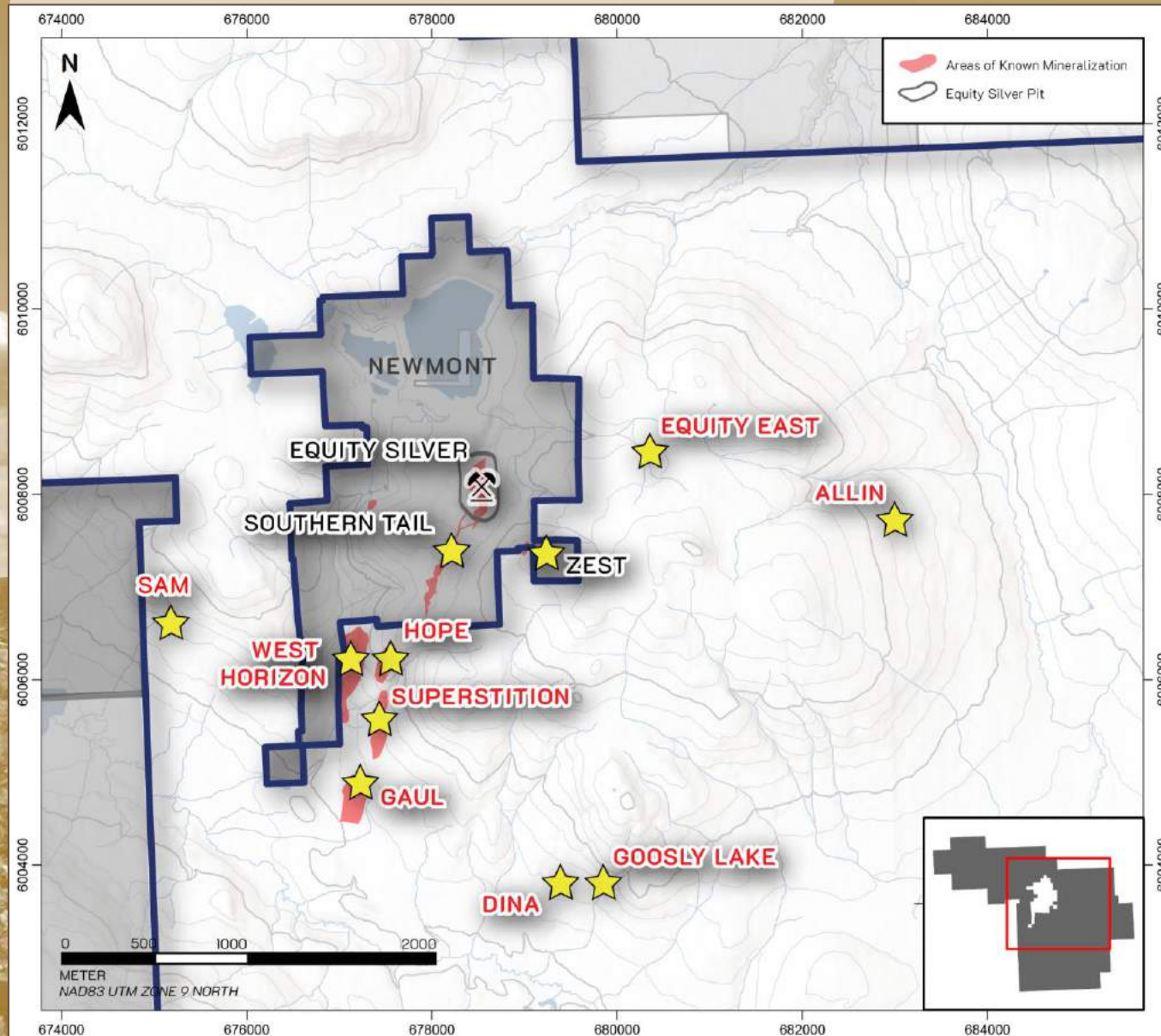
# SILVER HOPE CLAIMS & INFRASTRUCTURE

*21,690 Ha area property positioned in a highly prospective area with multiple producing and past-producing mines and neighboring brownfields exploration projects.*

- ▶ **Year-round access** to the property via a network of highways, forestry roads and the Equity Mine Road from Houston BC (20 km north).
- ▶ **Local work force and supplies** are easily accessible via Houston, Smithers, and Prince George.







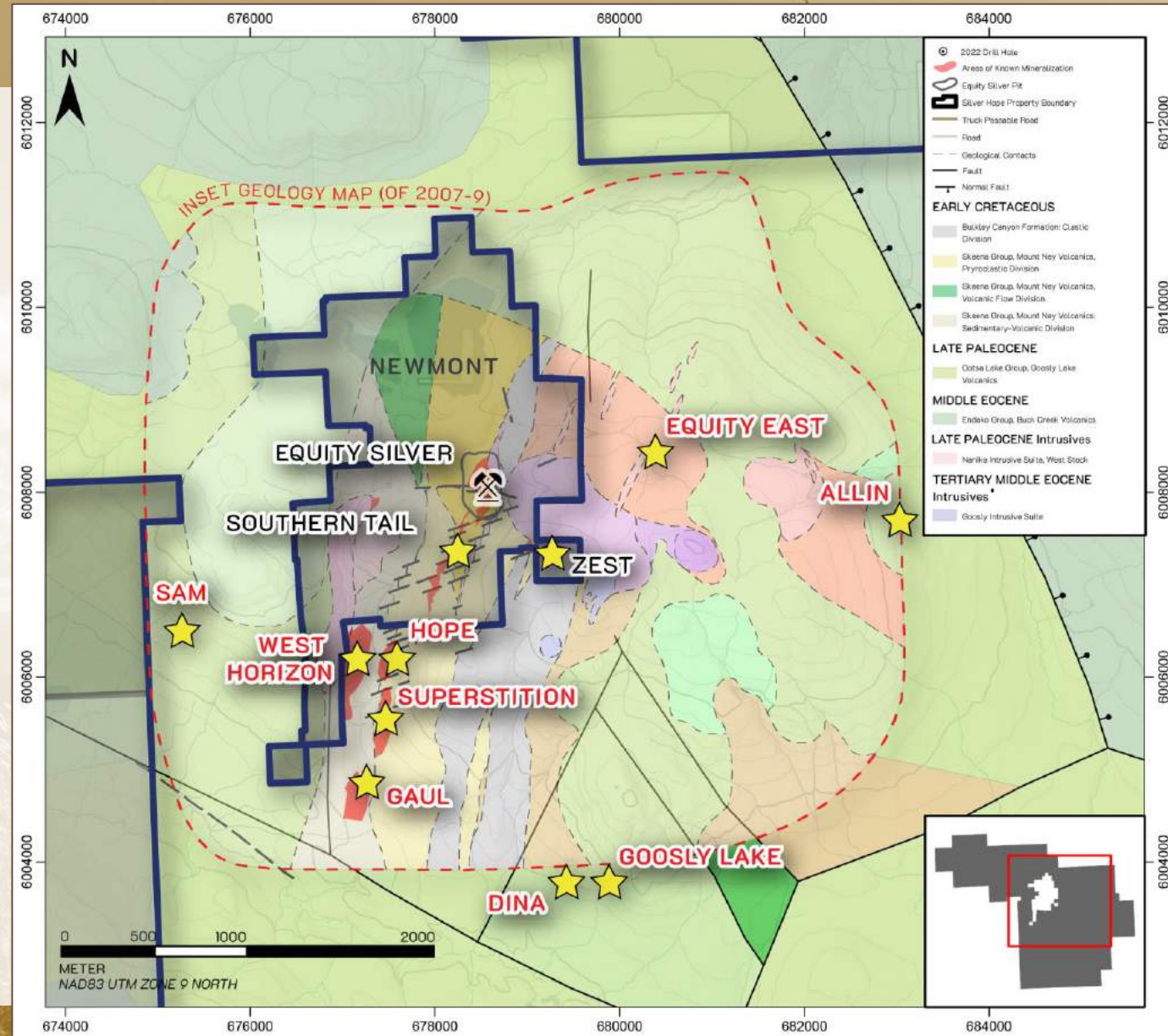
*Five main zones with two distinct mineralization styles (Ag-Au-Cu & porphyry Cu-Mo QMZ).*

1. **MAIN TREND** Hosts the Gaul, Superstition and Hope zones and is in a similar geological setting to the past-producing *Equity Silver Mine* which produced 33Mt containing 71 Moz Ag, 0.5 Moz Au and 185 lbs Cu.
2. **WEST HORIZON** *1 km long Cu-Mo porphyry zone* due west of the Main Trend.
3. **ALLIN** Geophysical and geochemical anomaly that *mirrors and parallels the >4 km long Main Zone* - Equity Silver Mine trend.
4. **EQUITY EAST** *Newly-discovered multi-element soil anomaly* associated with prospective geology and geophysical anomalies.
5. **SAM** Hosts significant historic drilling with *broad Zn-Ag intercepts* with high-grade intervals.



Underlain by predominantly Stikine Terrane volcanosedimentary sequences and cross-cutting Paleocene to Eocene intrusive plugs and stocks.

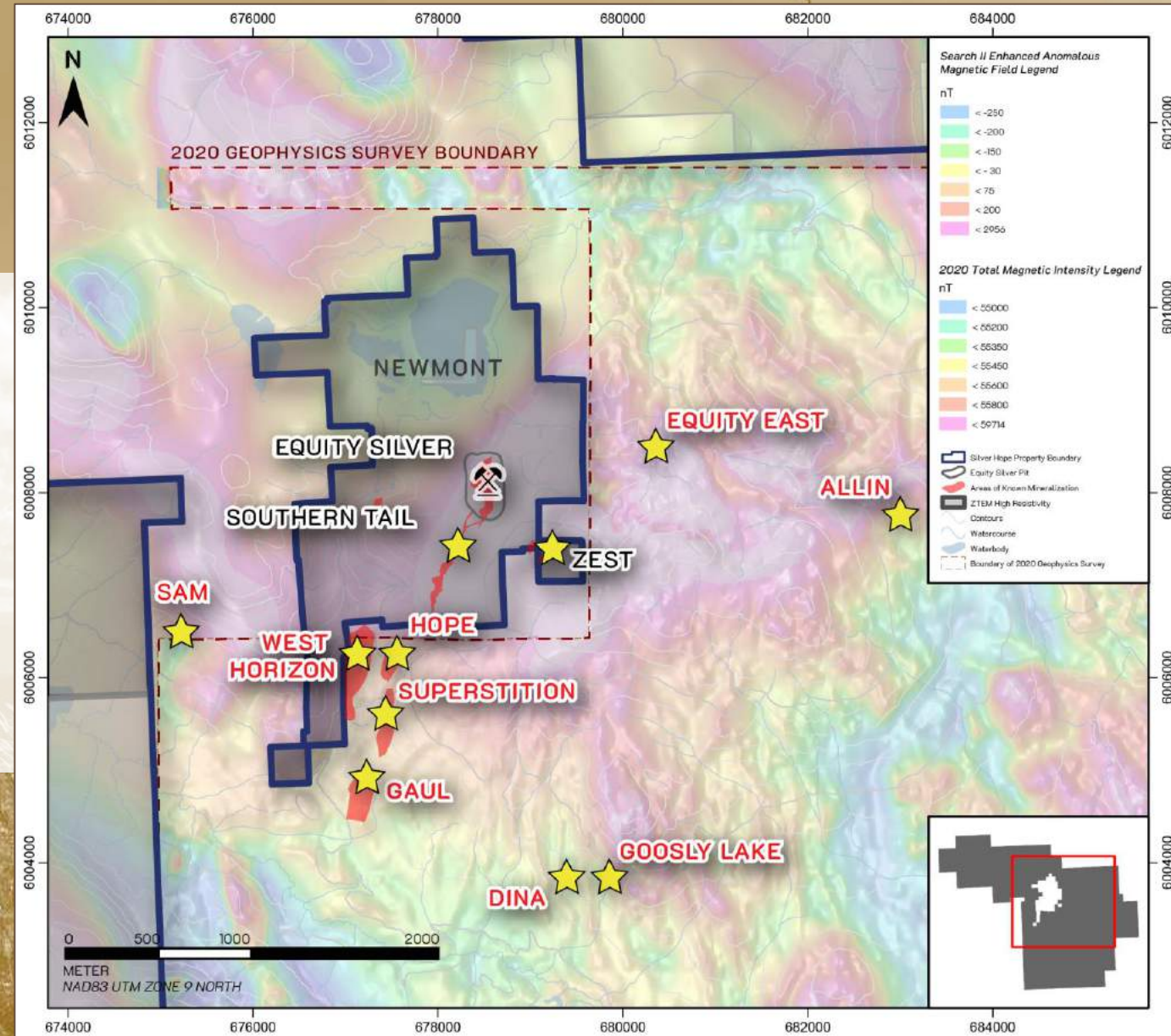
- ▶ **Stikine Terrane** is an **island-arc assemblage** of sedimentary, volcanic and associated plutonic rocks emplaced and accumulated during the Carboniferous to Middle Jurassic.
- ▶ Uplifted and exposed along the regional **northeast-trending Skeena Arc hosting several mineral deposits** across British Columbia.
- ▶ Property geology is dominated by **andesitic to basaltic rocks** of the **Eocene Endako Group** surrounded by an **erosional window** of uplifted **Cretaceous Skeena Group strata**.
- ▶ Bound to the **west and northeast** by stocks and plugs of the **Paleocene Nanika Intrusive Suite** and **the Eocene Goosly Intrusive Suite**, respectively.





Airborne magnetics and ZTEM surveys respectively show a magnetic high and associated resistivity anomaly coincident with the Goosly stock.

- ▶ *The Goosly intrusive stock* could have *a causative relationship* with Equity Silver Mine – Main Trend *mineralization*.
- ▶ *Several targets* and mineralized zones occur at the *edge of the magnetic-resistivity high*.





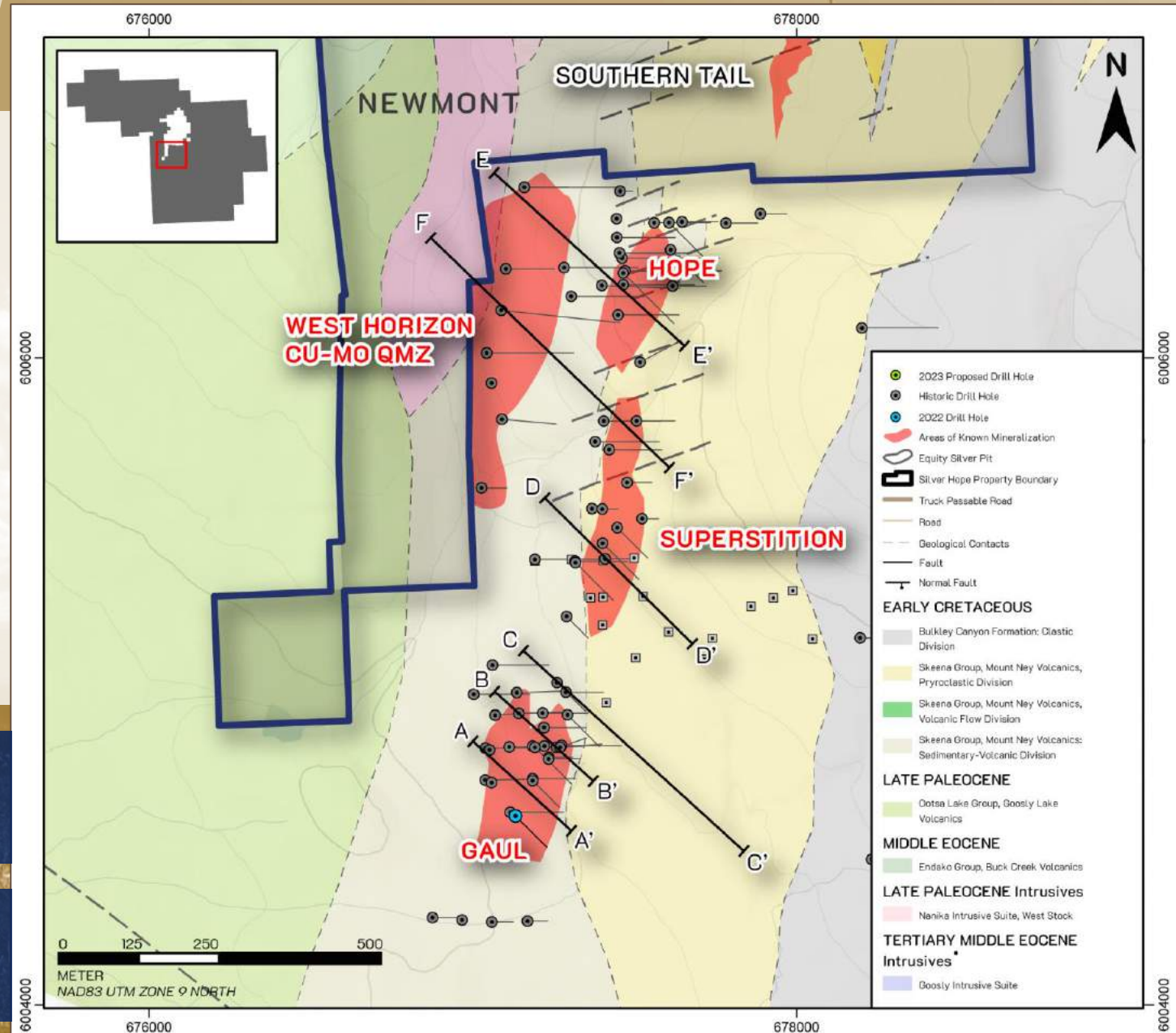
# SILVER HOPE MAIN TREND

2 km long Cu-Ag-Au mineralized trend comprised of the Gaul, Superstition and Hope Zones.

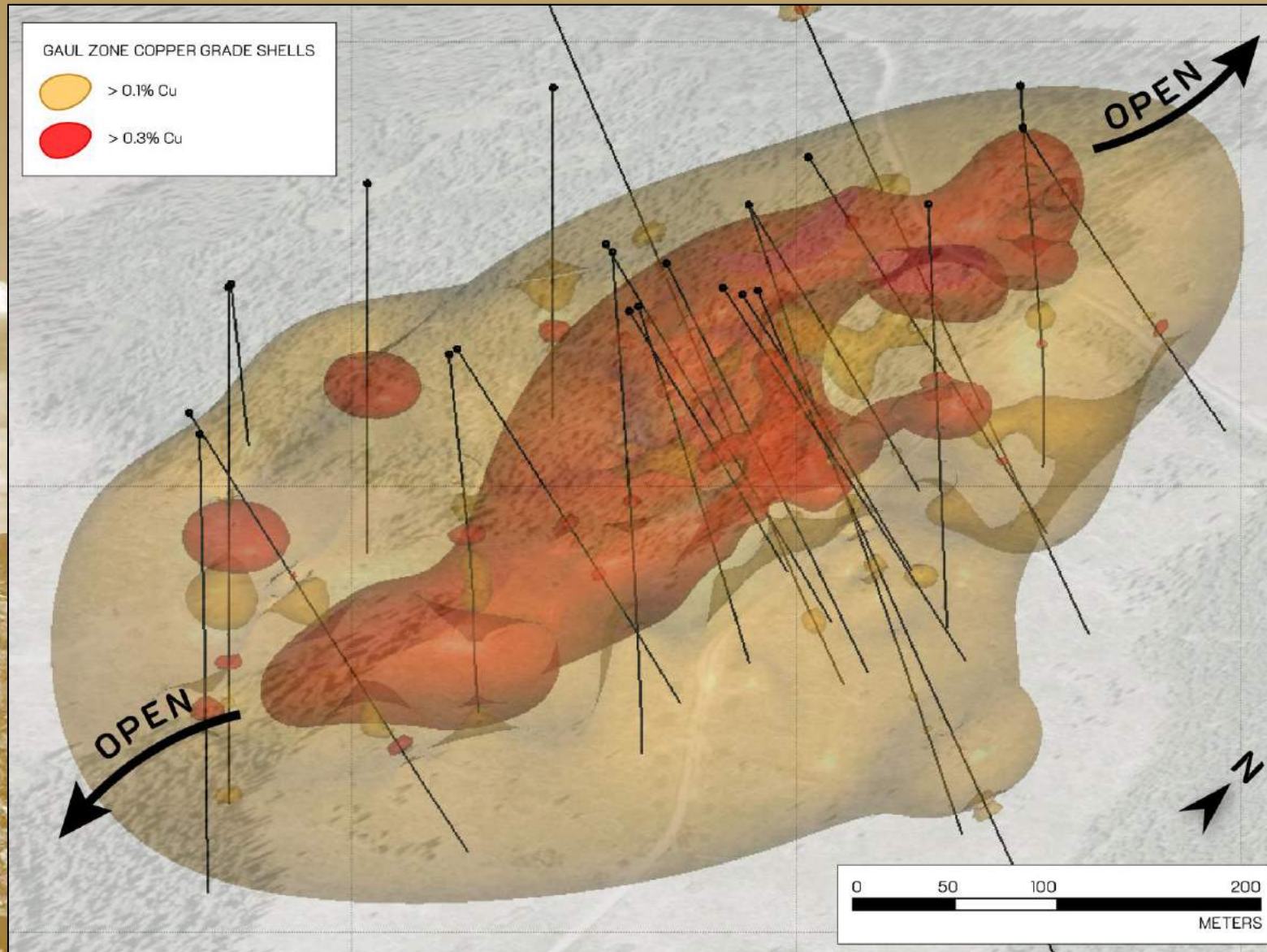
- ▶ Mineralized zones have a **NE-SW orientation** with **moderate NW dips** (as outlined by 2020-2021 drilling).
- ▶ **Longer intercepts and higher grades** are associated with **increased fracturing & veining** related to **higher density** Paleocene to Eocene **dykes**, most evident at the Gaul Zone.
- ▶ The Main Trend is **open between zones, along strike** to the south, and **down-dip**.

**2022 DRILL PROGRAM** (1 hole totalling 210 m) extended the **strike length** of mineralization at the **Gaul Zone** to **600 m**.

**2021 DRILL PROGRAM** (9 holes totalling 1,968 m) focussed on **up-dip continuity** of mineralization targeting **open pit potential**.



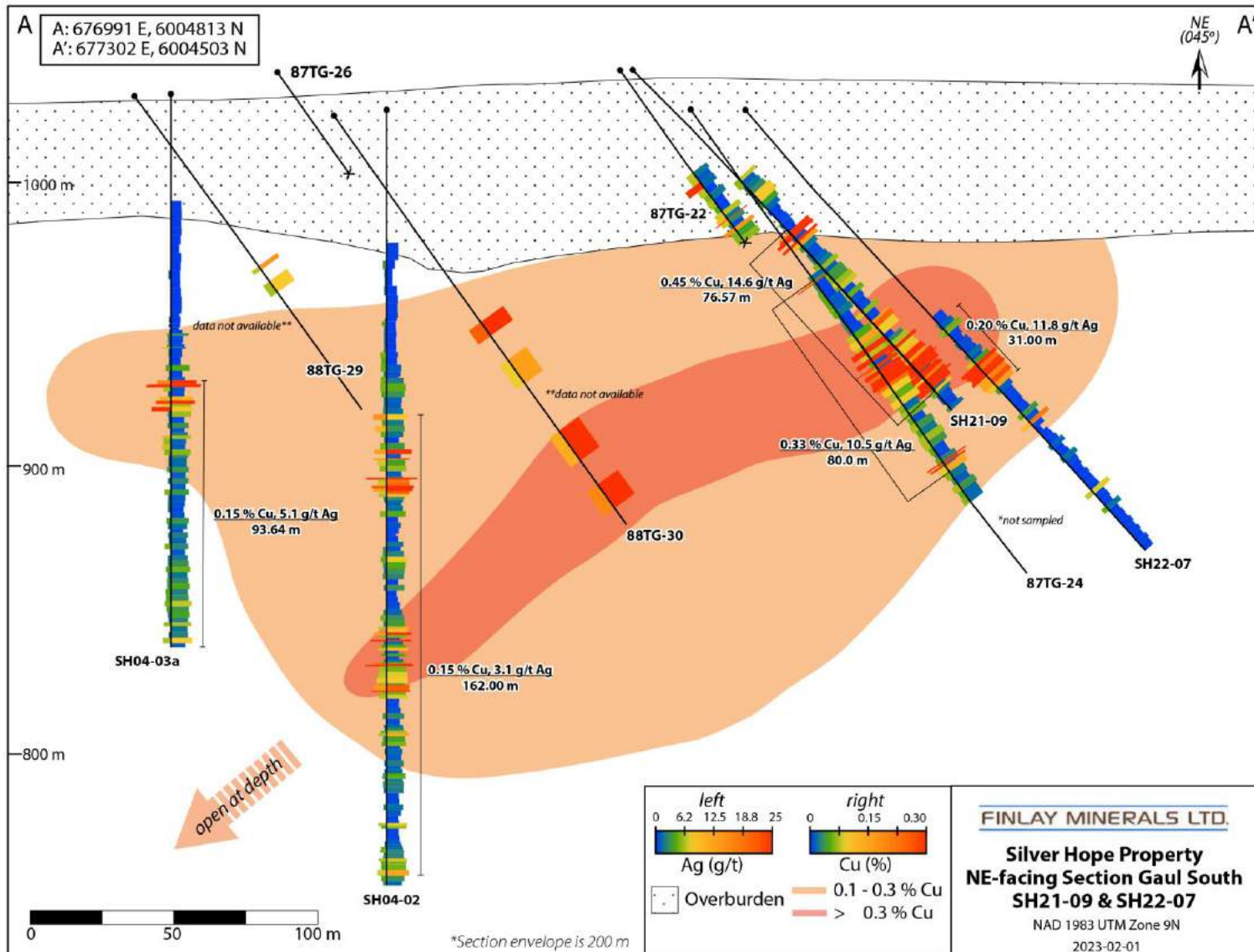




*Chalcopyrite-tetrahedrite-pyrite veins, fractures and breccia matrix emplaced in Early Cretaceous Skeena Group dust to ash tuffs.*

- ▶ Minor *late galena-sphalerite* veins occur within earlier chalcopyrite-tetrahedrite-pyrite.
- ▶ At least **600 m** of *along-strike* continuity and **300 m** of *down-dip* continuity.
- ▶ Mineralization *pools and brecciates* as *high-grade zones* along *post-mineral dyke contacts*.
- ▶ Breccia zones contain tuffaceous and mineralized fragments set in a matrix of hydrothermal *quartz-clay-pyrite-chalcopyrite-tetrahedrite-galena-sphalerite±arsenopyrite*





SH21-09: 82.1 – 83.23 m, 1.23 m assaying 1.27% Cu, 74.5 g/t Ag and 1.88 g/t Au



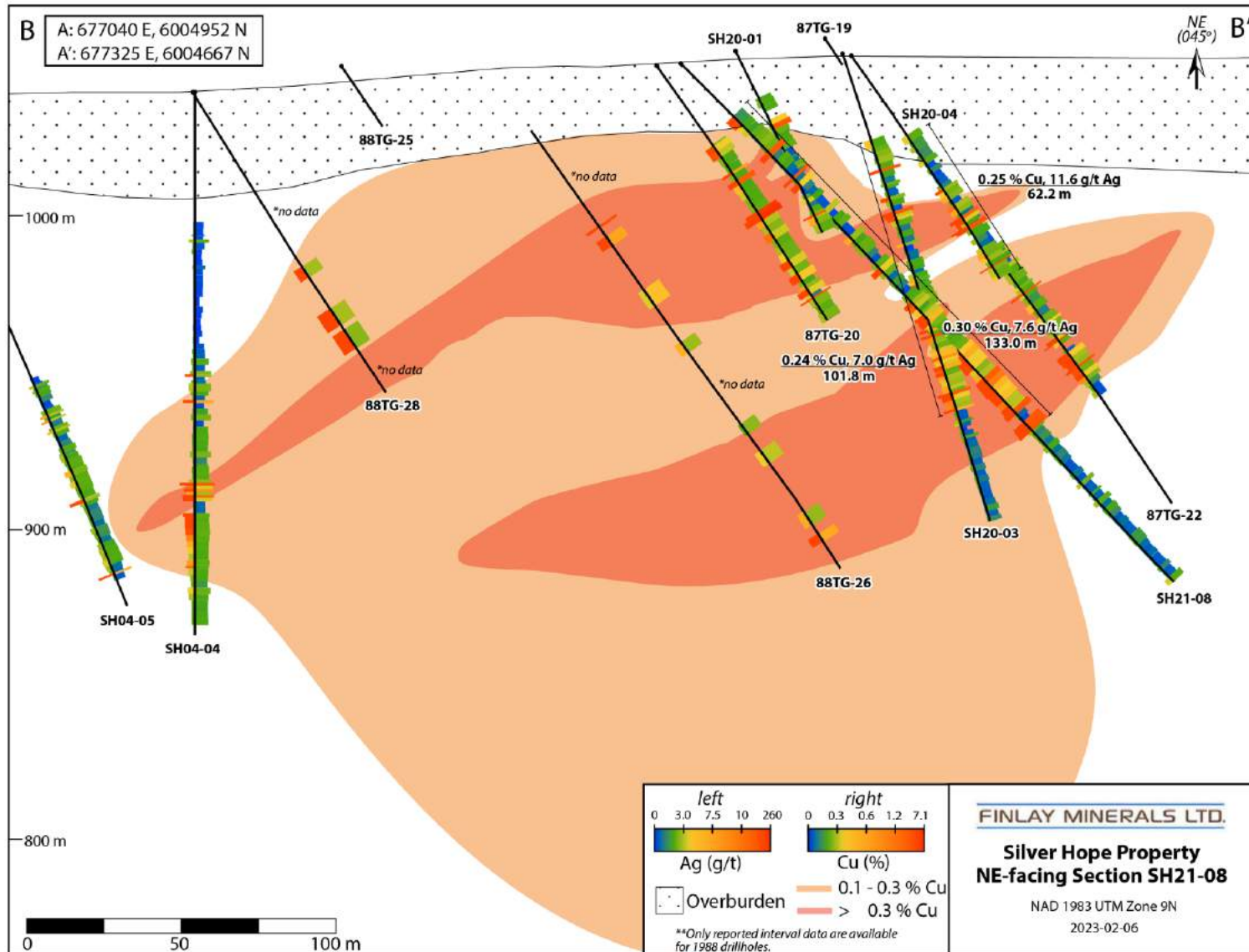
SH21-09: 135.5 – 136.7 m, 1.2 m assaying 1.79% Cu, 37.2 g/t Ag and 0.25 g/t Au



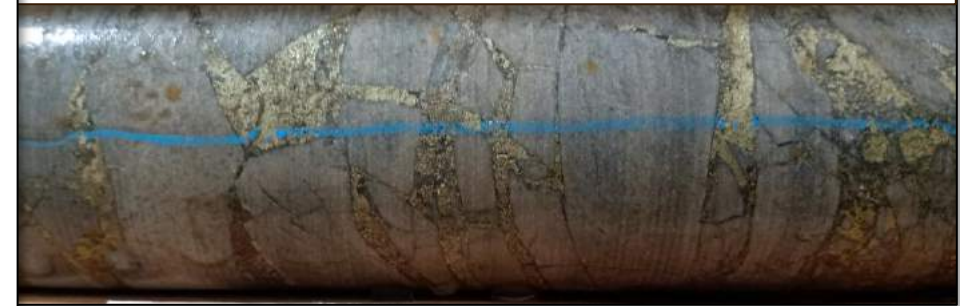
SH22-07: 121.8 123.03 –m, 1.23 m assaying 0.85% Cu, 80.5 g/t Ag and 2.05 g/t Au







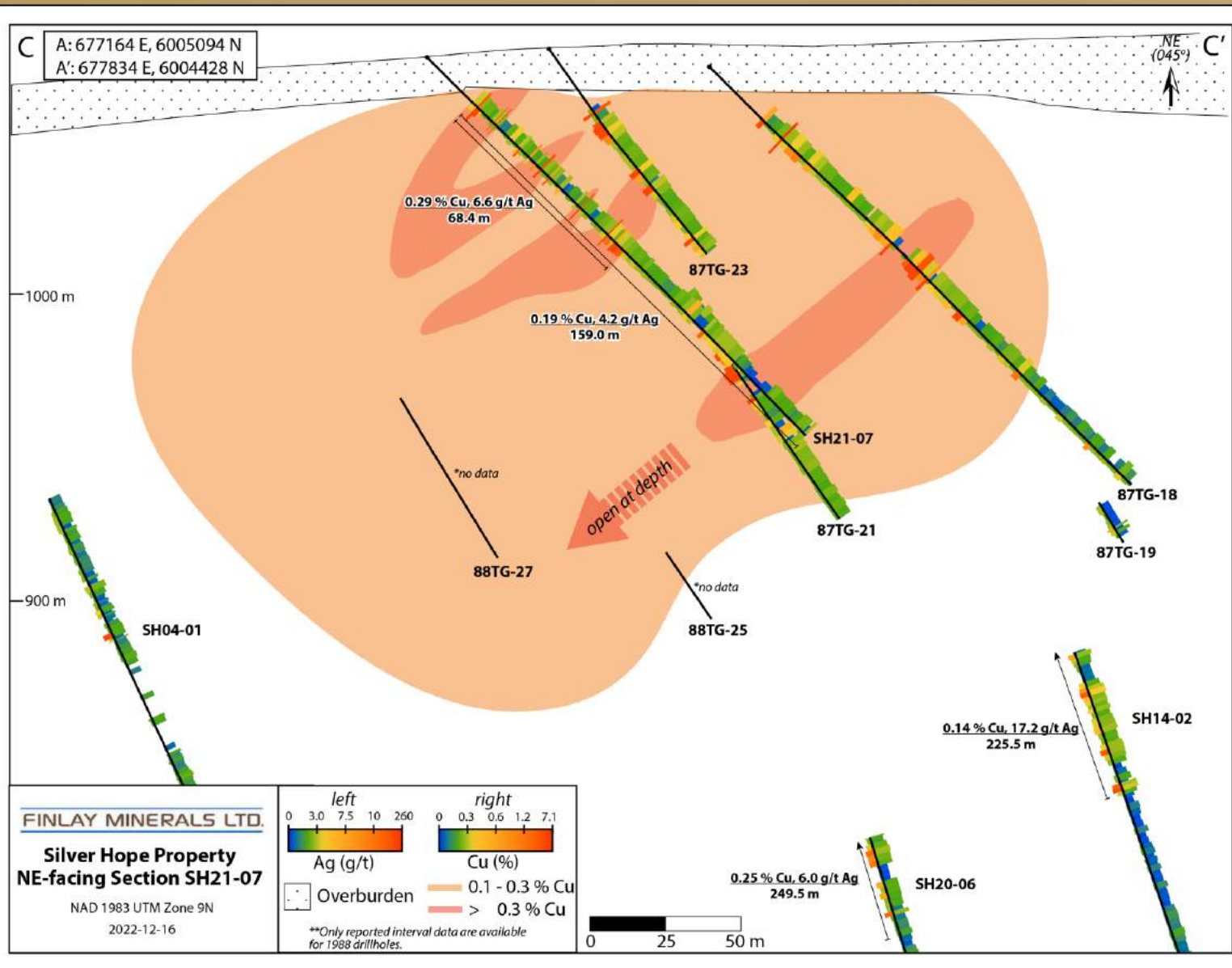
SH21-08 155.5 – 157.5 m, 2.0 m assaying 1.73% Cu, 25.5 g/t Ag and 0.06 g/t Au



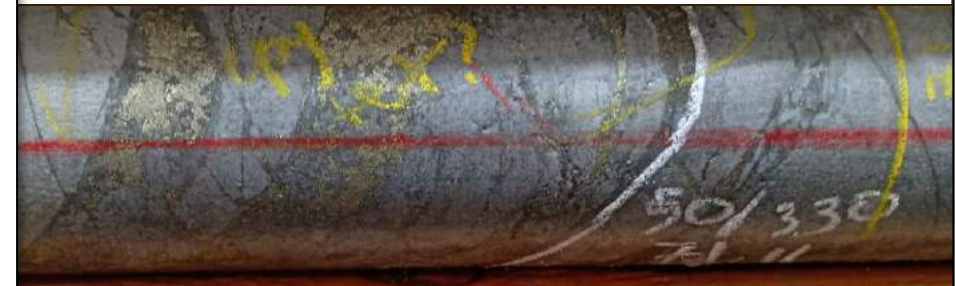
SH20-03 119.5 – 120.53 m, 1.03 m assaying 1.51% Cu, 49.7 g/t Ag and 0.11 g/t Au







SH21-07: 71.1 – 71.62 m, 0.52 m assaying 1.90% Cu, 86.3 g/t Ag and 0.05 g/t Au



SH21-07 83.9 – 84.34 m, 0.44 m assaying 3.75% Cu, 60.9 g/t Ag and 0.02 g/t Au





HOLE ID	FROM (M)	TO (M)	INTERVAL (M)	AU (G/T)	CU (%)	AG (G/T)	PB (%)	ZN (%)
<b>SH04-02</b>	108.0	270.0	162.0	0.02	0.15	3.1	<0.01	0.01
<i>including</i>	120.4	137.0	16.6	0.03	0.69	9.2	<0.01	0.01
<i>including</i>	130.3	135.0	4.8	0.03	1.83	20.2	<0.01	0.01
<i>including</i>	195.5	205.5	10.0	0.04	0.37	13.5	0.01	0.01
<b>SH14-02</b>	38.0	263.5	225.5	0.04	0.14	17.2	0.02	0.06
<i>including</i>	62.6	99.3	36.7	0.08	0.42	90.2	0.02	0.08
<i>including</i>	91.4	99.3	7.9	0.23	0.96	393.2	0.01	0.03
<b>SH20-01</b>	27.0	144.0	117.0	0.03	0.17	3.3	0.01	0.03
<i>including</i>	64.5	109.0	44.5	0.04	0.24	5.9	0.01	0.03
<b>SH20-02</b>	34.5	112.0	77.5	0.07	0.22	13.5	0.02	0.10
<i>including</i>	70.5	92.0	21.6	0.05	0.31	11.7	0.05	0.32
<b>SH20-03</b>	24.0	125.8	101.8	0.03	0.24	7.0	0.02	0.05
<i>including</i>	85.5	125.8	40.3	0.06	0.41	11.2	0.03	0.07
<i>including</i>	119.3	125.8	6.5	0.13	0.57	21.0	0.03	0.08
<b>SH20-04</b>	59.8	122.0	62.2	0.06	0.25	11.6	0.03	0.13
<i>including</i>	72.2	78.2	6.0	0.23	0.79	57.3	0.18	0.70
<b>SH20-05</b>	20.0	145.7	125.7	0.06	0.28	7.6	0.01	0.06
<i>including</i>	24.5	48.0	23.5	0.06	0.82	20.4	0.01	0.02
<i>including</i>	24.5	36.0	11.5	0.07	1.26	34.1	0.01	0.01
<i>including</i>	105.0	126.2	21.2	0.13	0.41	12.8	0.03	0.11
<i>including</i>	107.0	115.0	8.0	0.18	0.63	21.0	0.06	0.16

HOLE ID	FROM (M)	TO (M)	INTERVAL (M)	AU (G/T)	CU (%)	AG (G/T)	PB (%)	ZN (%)
<b>SH20-06</b>	27.0	276.5	249.5	0.06	0.25	6.0	0.01	0.06
<i>including</i>	27.0	37.0	10.0	0.11	2.33	65.0	0.04	0.01
<i>including</i>	79.4	128.0	48.6	0.12	0.36	6.4	0.01	0.15
<i>including</i>	114.2	128.0	13.8	0.36	0.64	15.8	0.04	0.53
<b>SH21-07</b>	18.0	177.0	159.0	0.04	0.19	4.2	0.01	0.02
<i>including</i>	21.1	89.5	68.4	0.03	0.29	6.6	0.01	0.02
<b>SH21-08</b>	32.0	165.0	133.0	0.03	0.30	7.6	0.02	0.08
<i>including</i>	107.0	164.2	57.2	0.06	0.51	13.8	0.03	0.16
<i>including</i>	129.0	164.2	35.2	0.08	0.69	18.0	0.05	0.19
<i>including</i>	160.1	164.2	4.1	0.32	1.62	56.8	0.23	1.01
<b>SH21-09</b>	54.5	156.8	102.3	0.11	0.35	11.3	0.03	0.06
<i>including</i>	80.2	155.1	74.8	0.14	0.46	15.1	0.03	0.05
<i>including</i>	80.2	85.3	5.1	0.54	0.83	38.4	0.11	0.12
<i>including</i>	135.0	155.1	20.1	0.30	1.26	38.6	0.07	0.00
<i>including</i>	143.0	152.9	9.9	0.47	1.94	58.7	0.10	0.01
<b>SH22-07</b>	102.0	133.0	31.00	0.22	0.20	11.8	0.01	0.04
<i>including</i>	121.6	133.0	11.40	0.41	0.49	30.1	0.03	0.05
<i>including</i>	121.6	127.3	5.70	0.72	0.59	48.4	0.05	0.06

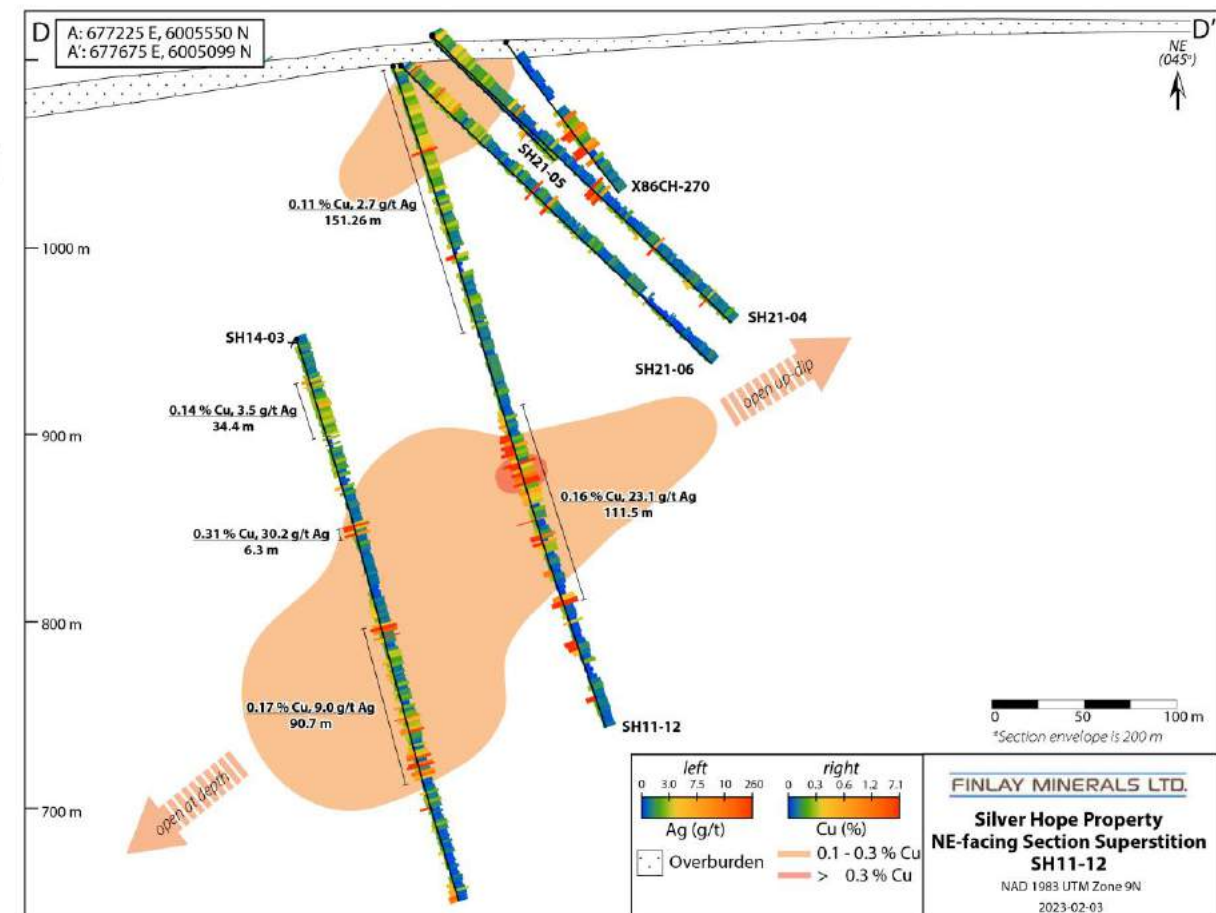


Comparable mineralization style to the Gaul Zone and due north along strike.

- ▶ Partially drill tested for **550 m along strike** and **600 m down-dip**.
- ▶ Current drilling has identified a **deeper mineralized zone** comparable to Gaul which was not been fully tested and is **open along-dip and along-strike**.

**SH11-12:** Intersected Gaul-style mineralization with **111.5 m** assaying **0.16% Cu, 23.1 g/t Ag and 0.29 g/t Au** from 204.0 m, including **12.9 m** assaying **0.56% Cu, 47.5 g/t Ag and 0.42 g/t Au** from 232.3 m.

SH11-12: 232.5 – 234.06 m, 1.56 m assaying 1.81% Cu, 209.0 g/t Ag and 2.02 g/t Au





HOLE ID	FROM (M)	TO (M)	INTERVAL (M)	AU (G/T)	CU (%)	AG (G/T)	PB (%)	ZN (%)
<b>SH11-11</b>	220.2	261.5	41.3	0.05	0.20	15.8	0.07	0.27
<i>including</i>	312.7	329.6	16.9	0.04	0.20	6.5	<0.01	0.18
<b>SH11-12</b>	3.1	154.4	151.3	0.02	0.11	2.7	0.01	0.04
<i>including</i>	18.0	53.0	38.0	0.01	0.20	3.1	<0.01	0.03
<i>and</i>	204.0	315.5	111.5	0.29	0.16	23.1	0.05	0.10
<i>including</i>	232.3	245.2	12.9	0.42	0.56	47.5	0.12	0.12
<i>including</i>	232.3	233.9	1.6	2.03	1.81	209.0	0.61	0.36
<i>including</i>	265.4	266.0	0.6	3.32	0.36	747.0	0.01	0.02
<b>SH14-03</b>	18.0	59.2	41.2	0.01	0.14	2.3	0.01	0.03
<i>and</i>	165.0	199.4	34.4	0.01	0.14	3.5	0.01	0.02
<i>and</i>	252.5	258.8	6.3	0.19	0.31	30.2	0.11	0.11
<i>and</i>	310.3	401.0	90.7	0.04	0.17	9.0	0.01	0.07
<i>including</i>	364.8	401.0	36.2	0.02	0.23	12.7	0.01	0.05
<i>including</i>	386.5	399.0	13.5	0.02	0.33	18.5	<0.01	0.04
<b>SH21-05</b>	3.5	64.0	60.5	0.02	0.12	0.8	<0.01	0.04
<i>and</i>	119.2	127.0	7.8	0.28	0.25	31.5	0.07	0.10
<b>SH21-06</b>	6.2	63.2	57.0	0.01	0.15	1.7	<0.01	0.02
<i>including</i>	20.0	40.0	20.0	0.02	0.23	2.3	<0.01	0.01



# SILVER HOPE

## HOPE ZONE

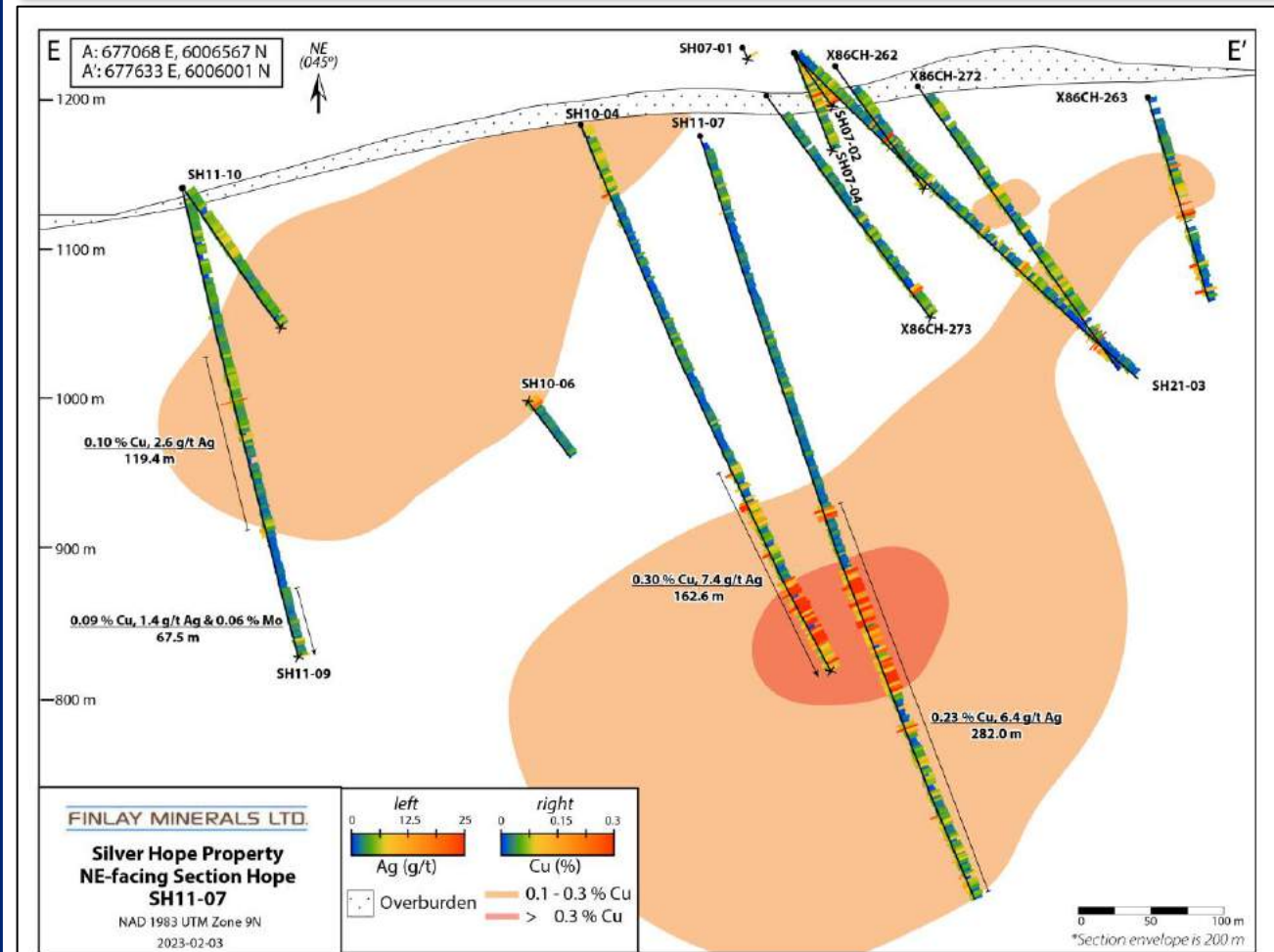
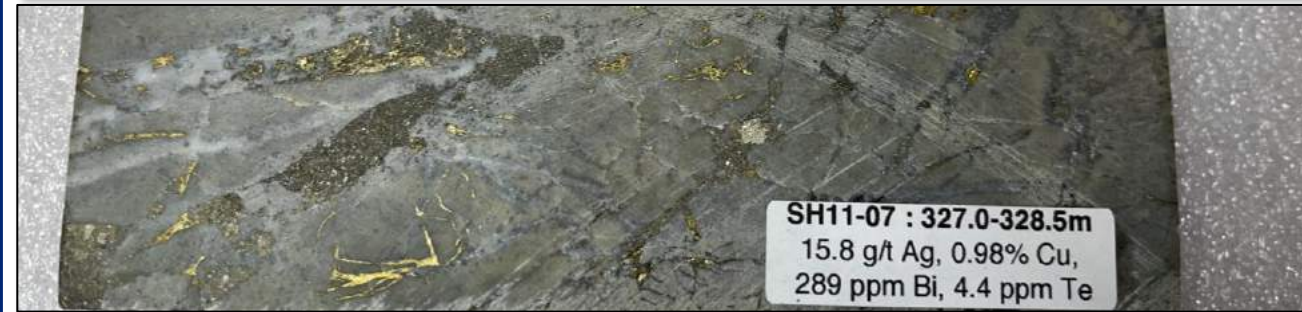
*Narrow high-grade Cu-Ag mineralized veins and zones within broader wide low-grade near-surface mineralized footprint.*

- ▶ Mineralization defined over **550 m along strike** and up to **500 m down-dip** starting **near surface**.
- ▶ Similar Cu-Ag mineralization at-depth to the Superstition and Gaul zones

**SH10-04:** Mineralization comparable to the Superstition and Gaul Zones with **162.6 m** assaying **0.30% Cu, 7.4 g/t Ag, and 0.02 g/t Au** from 266.7 m, including **74.3 m** assaying **0.52% Cu, 9.0 g/t Ag, and 0.02 g/t Au** from 355.0 m.

**SH11-07:** Mineralization comparable to the Superstition Zone with **282.0 m** assaying **0.23% Cu, 6.4 g/t Ag and 0.01 g/t Au** from 270.0 m, including **88.0 m** assaying **0.48% Cu, 11.1 g/t Ag and 0.02 g/t Au** from 315.0 m.

SH11-07 328.0 – 329.5 m, 1.5 m assaying 0.98% Cu, 15.8 g/t Ag, and 0.01 g/t Au





HOLE ID	FROM (M)	TO (M)	INTERVAL (M)	AU (G/T)	CU (%)	AG (G/T)	PB (%)	ZN (%)
<b>SH04-06</b>	9.1	394.3	385.1	0.06	0.11	9.6	0.01	0.02
<i>including</i>	207.0	299.0	92.0	0.07	0.26	36.1	0.03	0.05
<i>including</i>	222.9	227.0	4.2	0.09	0.39	81.3	0.04	0.07
<i>including</i>	284.0	299.0	15.0	0.29	0.98	152.4	0.12	0.16
<i>including</i>	287.0	289.4	2.4	1.39	4.12	637.4	0.51	0.61
<b>SH04-07</b>	8.2	192.0	183.8	0.04	0.11	0.5	<0.01	<0.01
<i>including</i>	8.2	56.0	47.8	0.05	0.13	0.8	<0.01	<0.01
<i>including</i>	149.0	192.0	43.0	0.05	0.15	0.6	<0.01	<0.01
<b>SH07-01</b>	9.2	485.9	476.7	0.03	0.08	5.5	<0.01	0.01
<i>including</i>	9.2	157.2	148.0	0.05	0.11	1.6	<0.01	0.01
<i>including</i>	213.0	356.0	143.0	0.04	0.07	14.9	0.01	0.02
<i>including</i>	213.0	215.0	2.0	0.34	0.28	107.0	0.05	0.05
<i>including</i>	257.5	261.5	4.0	0.13	0.59	90.2	0.02	0.06
<b>SH07-02</b>	22.8	415.5	392.8	0.04	0.14	13.1	<0.01	0.01
<i>including</i>	30.8	86.5	55.7	0.08	0.26	2.3	<0.01	0.01
<i>including</i>	41.8	70.4	28.6	0.10	0.35	3.1	<0.01	0.01
<i>including</i>	47.8	53.8	6.0	0.11	0.66	11.4	<0.01	0.04
<i>including</i>	179.0	285.0	106.0	0.06	0.23	43.4	0.01	0.03
<i>including</i>	193.0	235.5	42.5	0.05	0.37	63.7	0.02	0.06
<i>including</i>	225.5	231.5	6.1	0.13	0.65	352.1	0.12	0.39
<i>including</i>	265.5	269.5	4.0	0.11	0.30	175.0	0.01	0.05
<b>SH07-03</b>	4.9	185.5	180.6	0.05	0.12	0.8	<0.01	0.01
<i>including</i>	16.0	36.0	20.0	0.07	0.18	1.7	0.02	0.04
<i>including</i>	144.0	167.5	23.5	0.06	0.20	1.2	0.01	0.01

HOLE ID	FROM (M)	TO (M)	INTERVAL (M)	AU (G/T)	CU (%)	AG (G/T)	PB (%)	ZN (%)
<b>SH07-04</b>	14.0	321.3	307.2	0.03	0.11	4.4	0.01	0.02
<i>including</i>	14.0	44.5	30.5	0.06	0.24	1.1	0.01	0.02
<i>including</i>	172.5	204.0	31.5	0.02	0.22	3.4	0.00	0.01
<i>including</i>	316.0	319.8	3.8	0.08	1.03	171.2	0.02	0.07
<b>SH10-04</b>	4.6	429.3	424.7	0.02	0.16	3.4	0.01	0.02
<i>including</i>	266.7	429.3	162.6	0.02	0.30	7.4	0.02	0.05
<i>including</i>	355.0	429.3	74.3	0.02	0.52	9.0	<0.01	<0.01
<i>including</i>	361.0	405.0	44.0	0.02	0.63	10.7	<0.01	<0.01
<i>including</i>	375.0	391.1	16.1	0.03	0.76	10.4	<0.01	<0.01
<b>SH11-07</b>	270.0	552.0	282.0	0.01	0.23	6.4	0.01	0.01
<i>including</i>	270.0	278.1	8.1	0.02	0.43	23.6	0.06	0.15
<i>including</i>	313.8	433.5	119.8	0.02	0.39	9.2	<0.01	<0.01
<i>including</i>	315.0	403.0	88.0	0.02	0.48	11.1	<0.01	<0.01
<i>including</i>	315.0	345.0	30.0	0.02	0.65	13.6	<0.01	<0.01
<b>SH11-09</b>	149.5	150.2	0.7	0.30	2.47	204.0	0.42	0.65
<i>including</i>	314.0	346.2	32.2	0.01	0.12	2.5	0.00	0.02
<b>SH11-10</b>	6.1	139.0	132.1	0.03	0.10	0.9	<0.01	<0.01
<i>including</i>	28.1	68.0	39.9	0.04	0.16	1.0	<0.01	<0.01
<i>and</i>	208.7	210.0	1.3	0.09	1.44	204.0	0.69	0.29
<b>SH21-01</b>	90.0	90.7	0.7	0.09	1.14	626.0	1.18	0.19
<b>SH21-03</b>	17.0	123.1	106.1	0.04	0.10	0.9	0.01	0.02
<i>and</i>	169.5	226.4	56.9	0.04	0.12	3.0	0.01	0.04
<i>including</i>	204.0	226.4	22.4	0.08	0.16	5.5	0.02	0.10
<i>and</i>	275.0	276.0	1.0	0.23	1.47	75.3	0.06	0.03

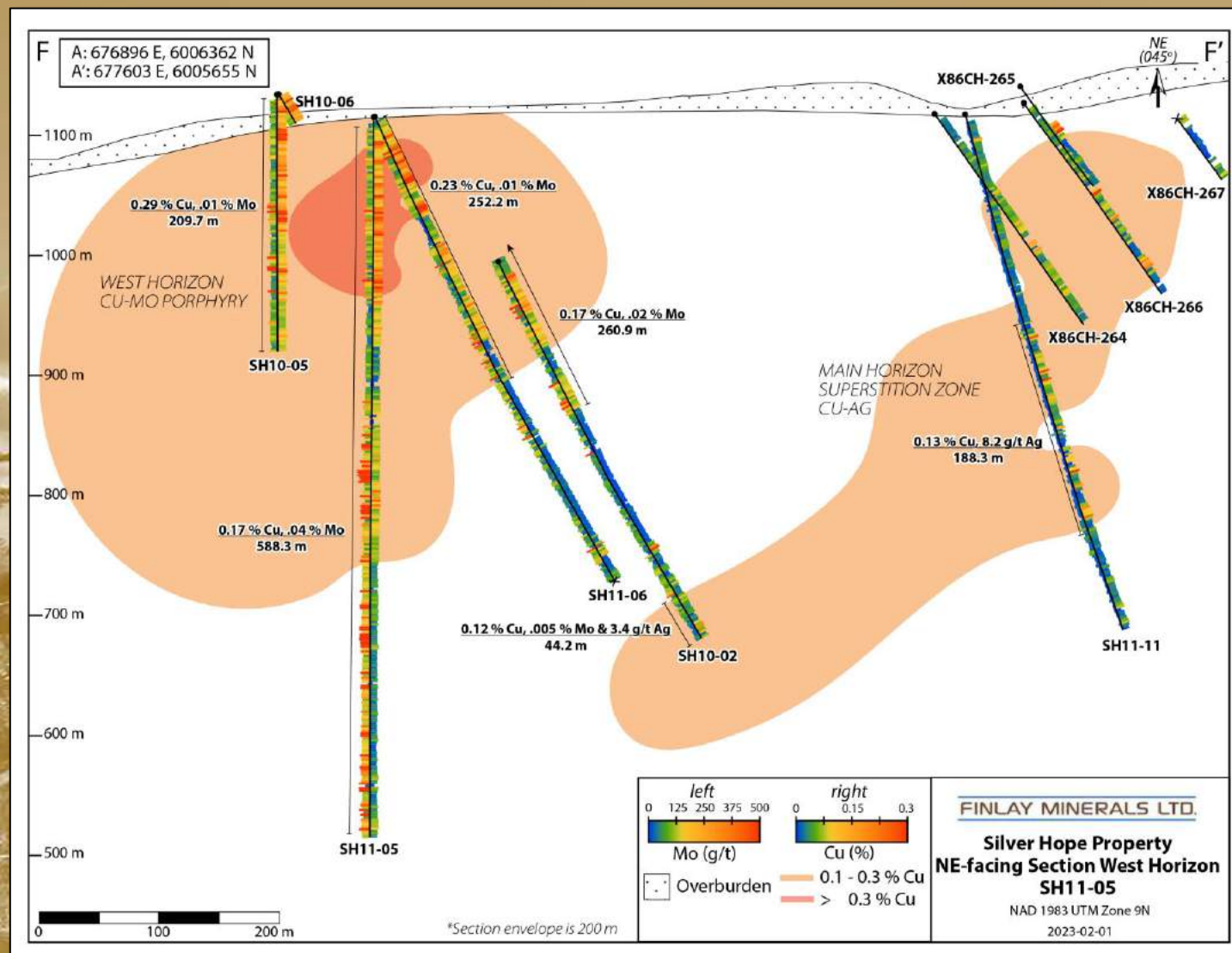


*Molybdenite-chalcopyrite dominant mineralization hosted in the Late Paleocene New Nanika QMZ Unit*

- ▶ **Good continuity** between drill holes with **consistent grades**.
- ▶ Mineralization has been intersected over **1 km of strike length** from south to north with **further infill and step out required** to define a resource (open along strike).

**SH11-05:** drilled the widest intercept with **588.3 m** assaying **0.17% Cu, 0.04% Mo and 0.05 g/t Au** from 11.7 m, including **130.5 m** assaying **0.35% Cu, 0.02 % Mo and 0.07 g/t Au**.

SH11-05: 297.8 – 298.8 m, 1 m at 0.13% Cu, 45.8 g/t Ag, 0.25 g/t Au and 0.85% Mo



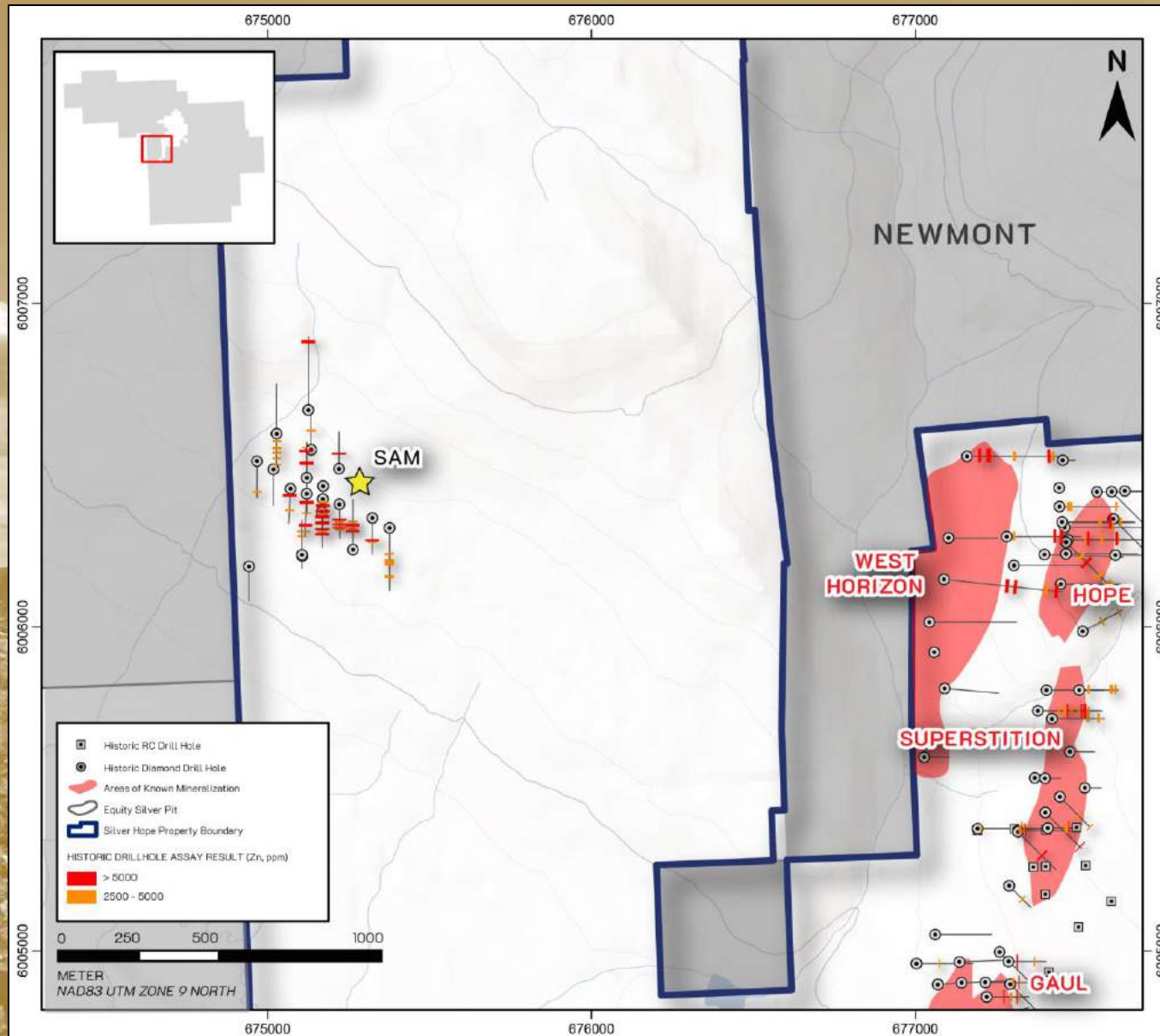


HOLE ID	FROM (M)	TO (M)	INTERVAL (M)	AU (G/T)	CU (%)	AG (G/T)	MO (%)
<b>SH10-02</b>	0.0	260.9	260.9	0.03	0.17	1.2	0.015
<i>including</i>	12.8	94.2	81.4	0.03	0.20	0.9	0.011
<i>including</i>	124.1	198.1	74.0	0.05	0.24	2.3	0.020
<i>including</i>	148.2	162.2	14.1	0.08	0.32	5.2	0.041
<i>and</i>	451.7	495.9	44.2	0.01	0.12	3.4	0.005
<b>SH10-03</b>	2.2	258.8	256.6	0.04	0.27	2.9	0.017
<i>including</i>	38.9	242.3	203.4	0.04	0.32	3.3	0.019
<i>including</i>	38.9	92.0	53.1	0.03	0.35	2.7	0.016
<i>including</i>	162.3	224.3	62.0	0.06	0.37	6.1	0.022
<b>SH10-05</b>	6.7	216.4	209.7	0.05	0.29	1.6	0.014
<i>including</i>	31.0	109.0	78.0	0.05	0.38	1.9	0.015
<i>including</i>	31.0	41.0	10.0	0.10	0.53	2.8	0.014
<i>including</i>	99.0	109.0	10.0	0.05	0.50	2.2	0.033
<b>SH10-06</b>	5.2	193.1	187.9	0.06	0.28	2.1	0.027
<i>including</i>	12.0	60.0	48.0	0.07	0.37	2.1	0.020
<i>including</i>	48.0	60.0	12.0	0.09	0.45	2.7	0.034

HOLE ID	FROM (M)	TO (M)	INTERVAL (M)	AU (G/T)	CU (%)	AG (G/T)	MO (%)
<b>SH11-04</b>	95.3	308.8	213.5	0.03	0.19	0.6	0.012
<i>including</i>	135.3	202.8	67.5	0.04	0.27	0.9	0.014
<b>SH11-05</b>	11.7	600.0	588.3	0.05	0.17	1.9	0.040
<i>including</i>	11.7	373.0	361.3	0.07	0.23	2.6	0.040
<i>including</i>	22.4	152.9	130.5	0.07	0.35	0.9	0.015
<i>including</i>	81.5	101.5	20.0	0.08	0.42	0.7	0.019
<i>including</i>	129.5	147.5	18.0	0.06	0.43	2.2	0.027
<i>including</i>	296.0	307.0	11.0	0.88	0.12	39.2	0.712
<b>SH11-06</b>	6.1	258.3	252.2	0.05	0.23	0.4	0.013
<i>including</i>	22.2	98.0	75.8	0.07	0.36	0.6	0.016
<i>including</i>	33.1	68.3	35.2	0.08	0.46	0.7	0.015
<i>and</i>	410.5	714.1	303.6	0.02	0.15	3.4	0.003
<i>including</i>	503.0	509.0	6.0	0.02	0.69	7.2	0.005
<i>including</i>	554.0	591.4	37.4	0.02	0.25	3.4	0.001
<i>including</i>	642.0	681.0	39.0	<0.01	0.24	6.1	<0.001
<b>SH11-13</b>	156.0	241.9	85.9	0.02	0.12	1.5	0.006



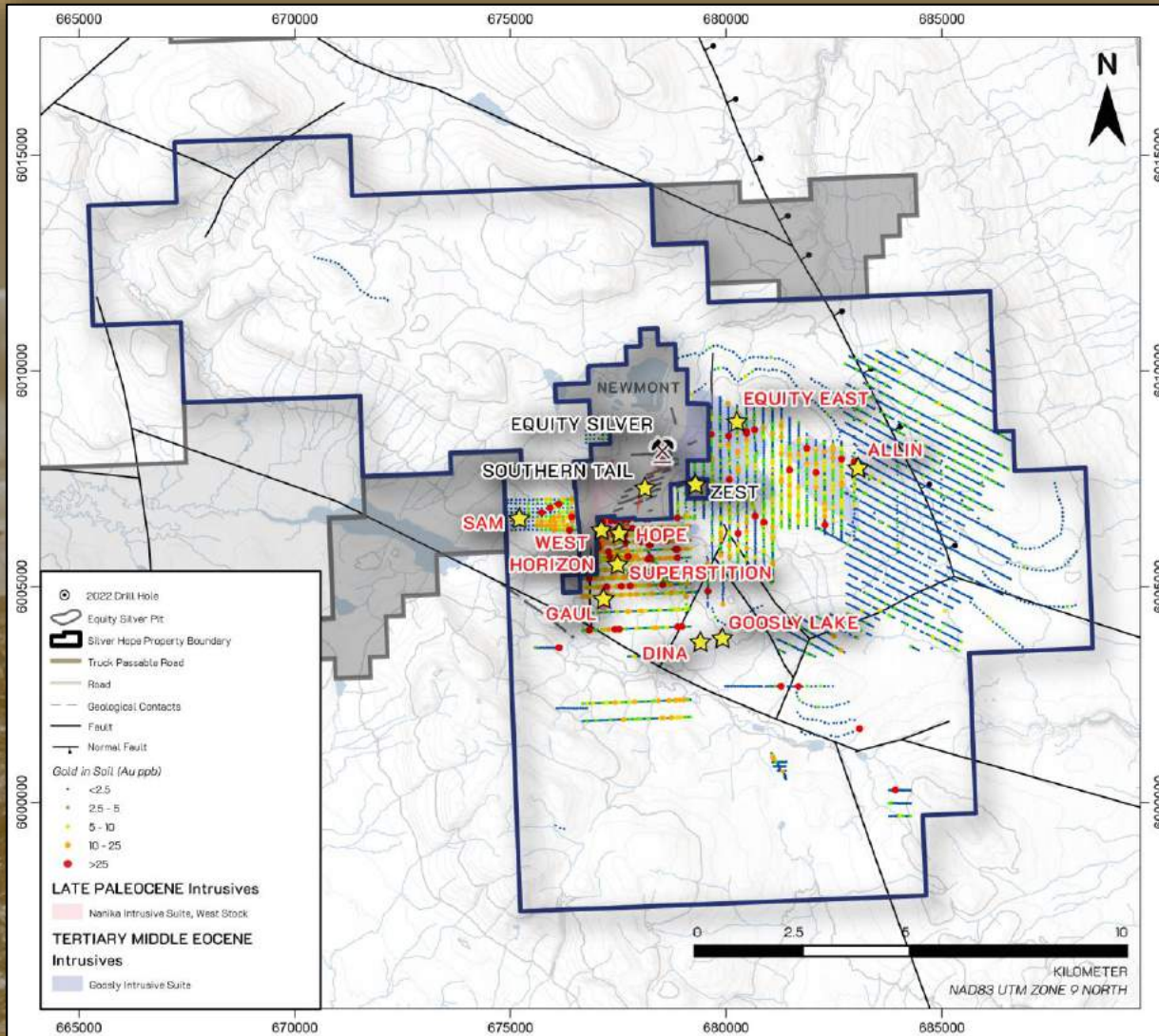
# SILVER HOPE *SAM ZONE*



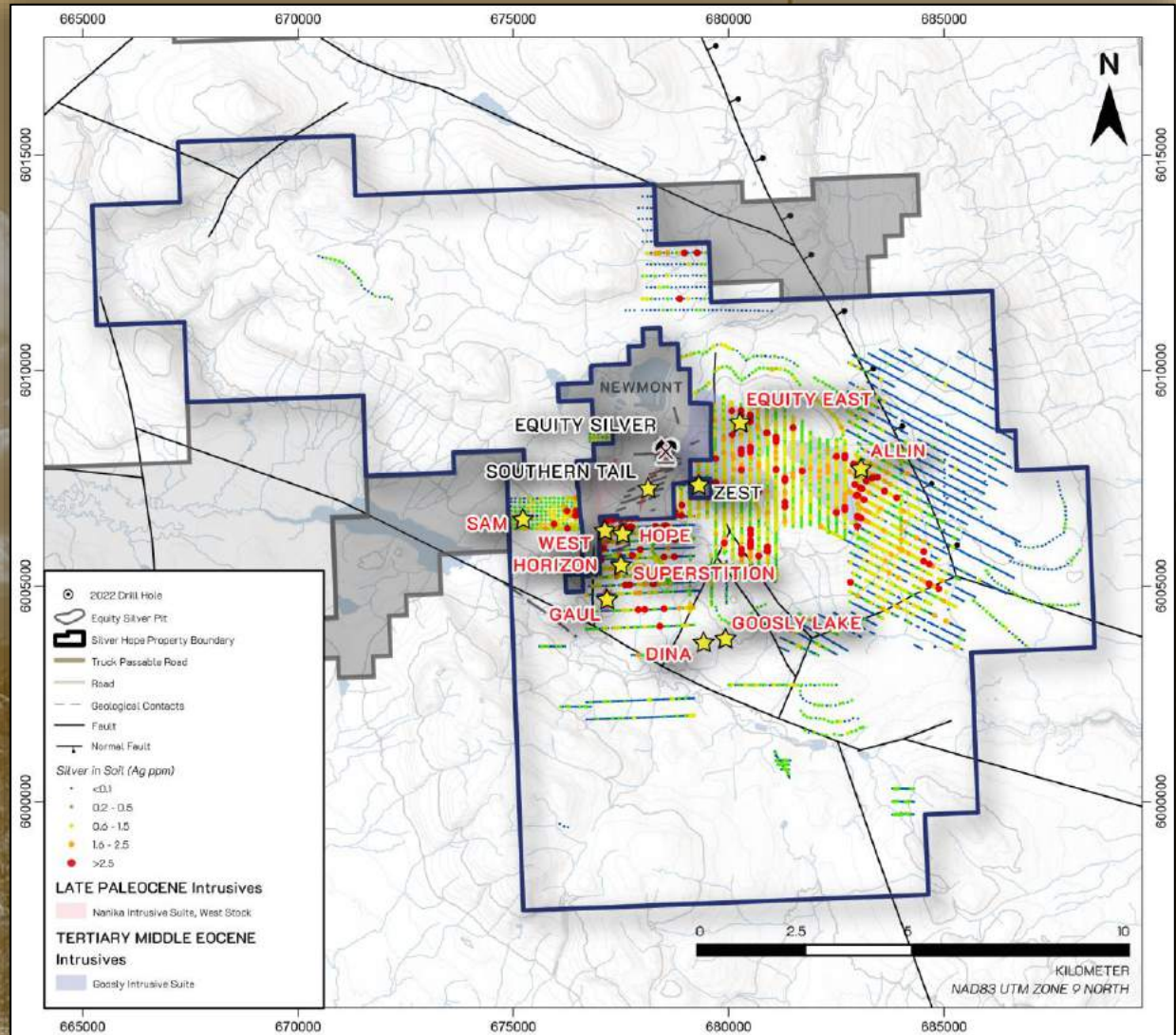
Located on the western side of the property west of the Main Trend and West Horizon Cu-Mo QMZ.

- ▶ Drill tested for **550 m along strike** and remains **open along strike and at depth**
- ▶ 1986 & 1987 in the East Zone within the **pyritic calcite-quartz-silicate alteration zone** intersected several **massive to semi-massive sulphide** intervals with **25.0 to 715.0 g/t Ag** and **<1% up to 9.5% Zn**
- ▶ **Sericite-carbonate-chlorite±quartz** alteration with **brecciated local clay-matrix sulphide** intervals



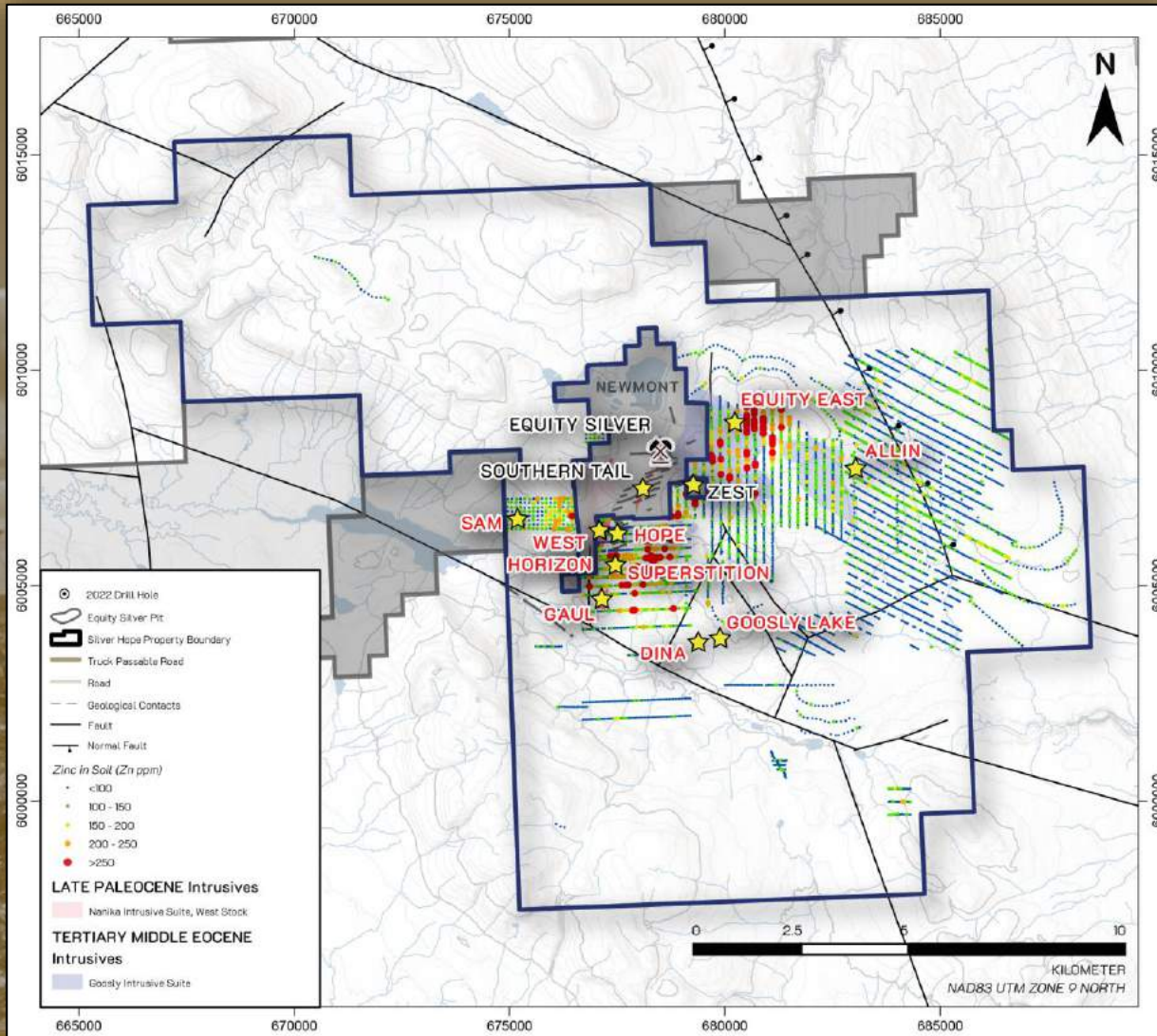


AU IN SOIL

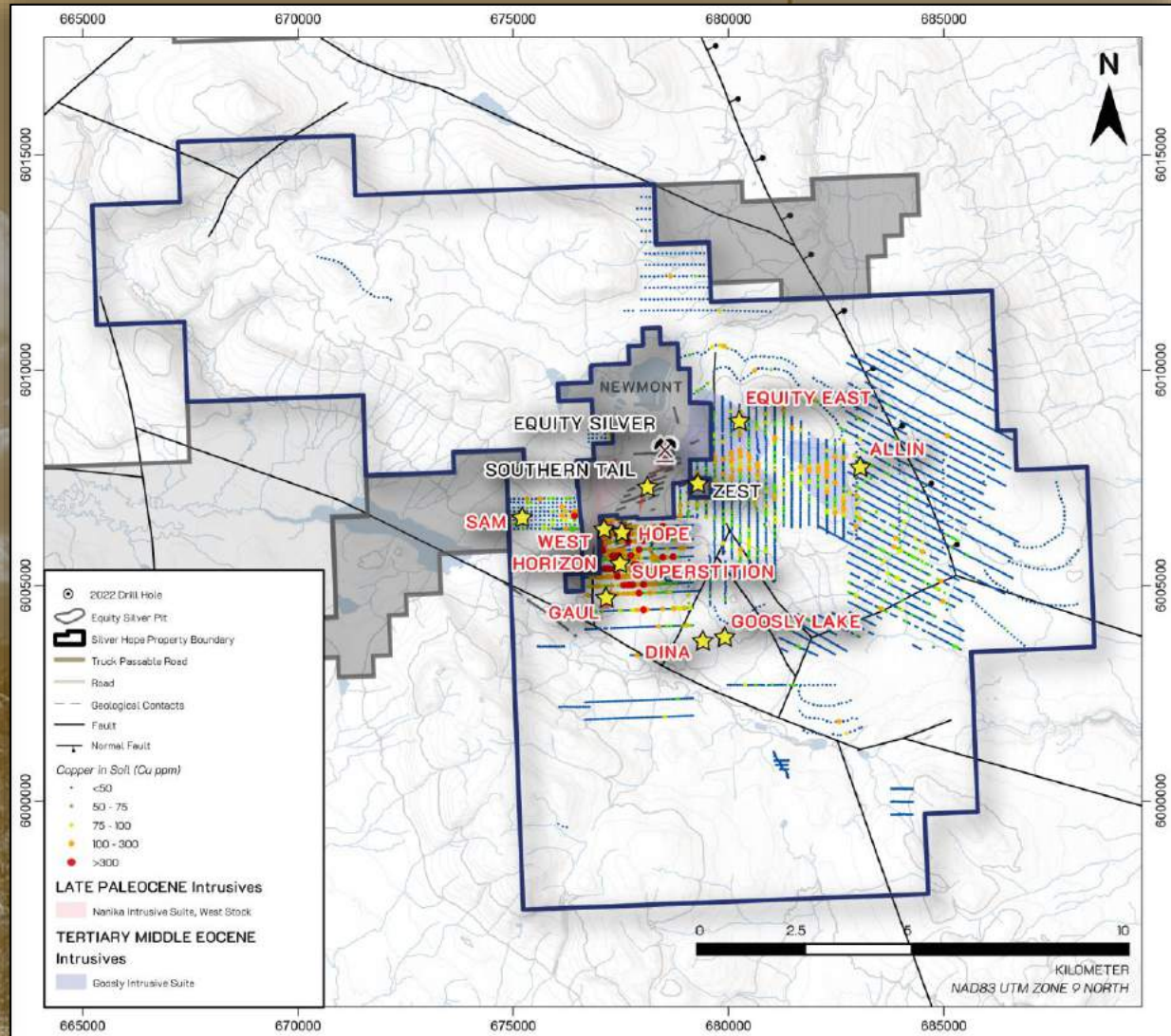


AG IN SOIL





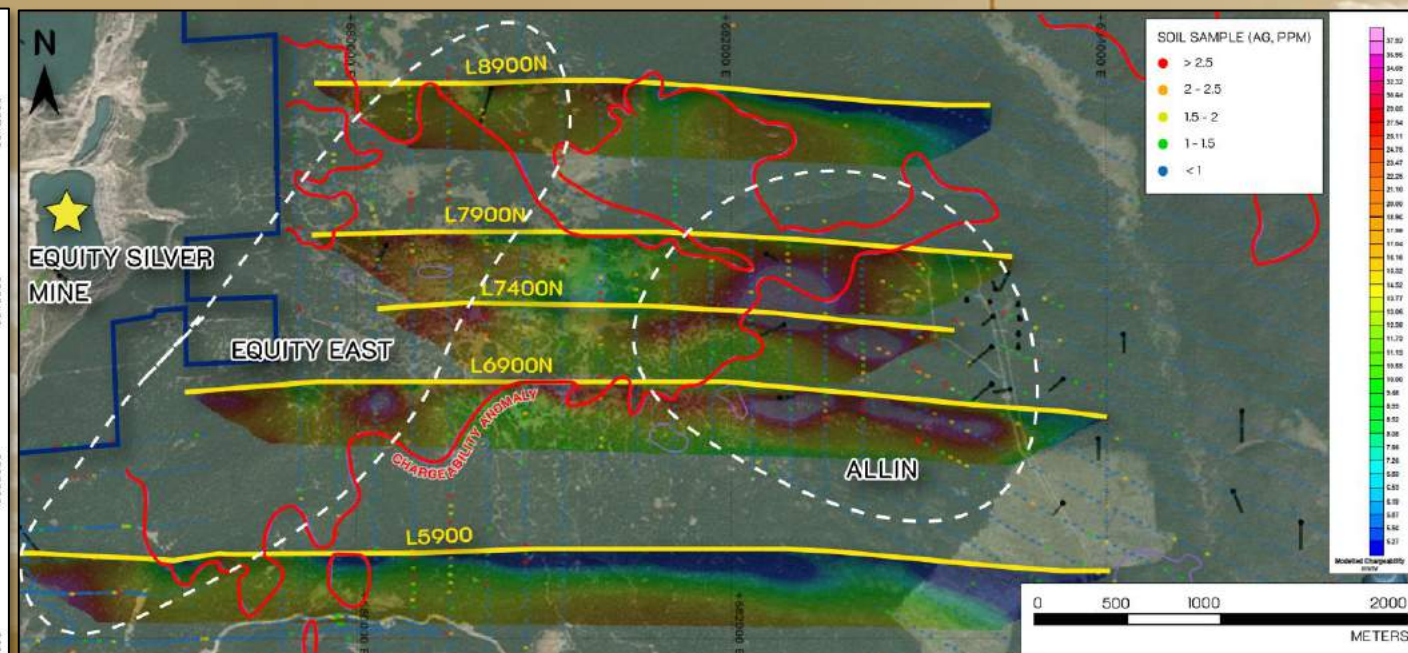
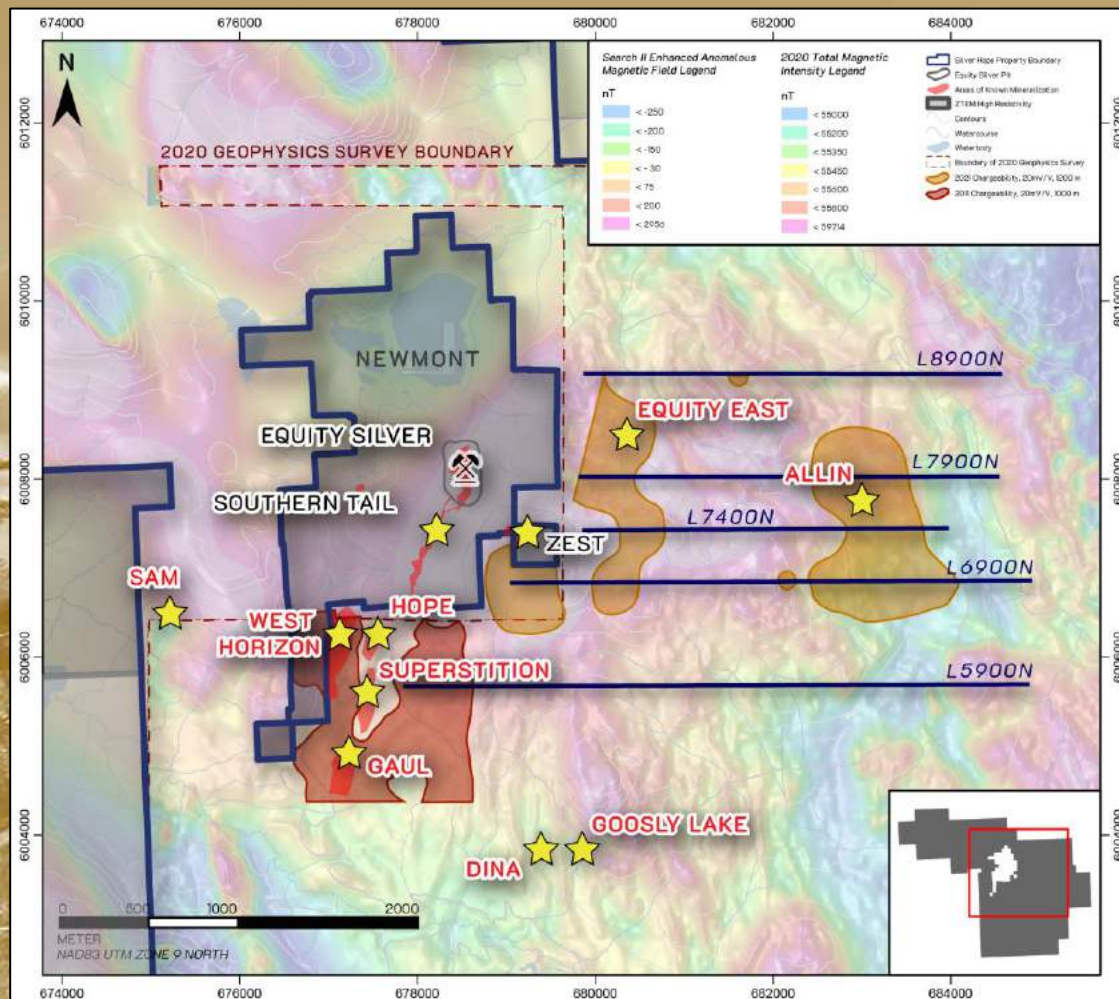
ZN IN SOIL



CU IN SOIL



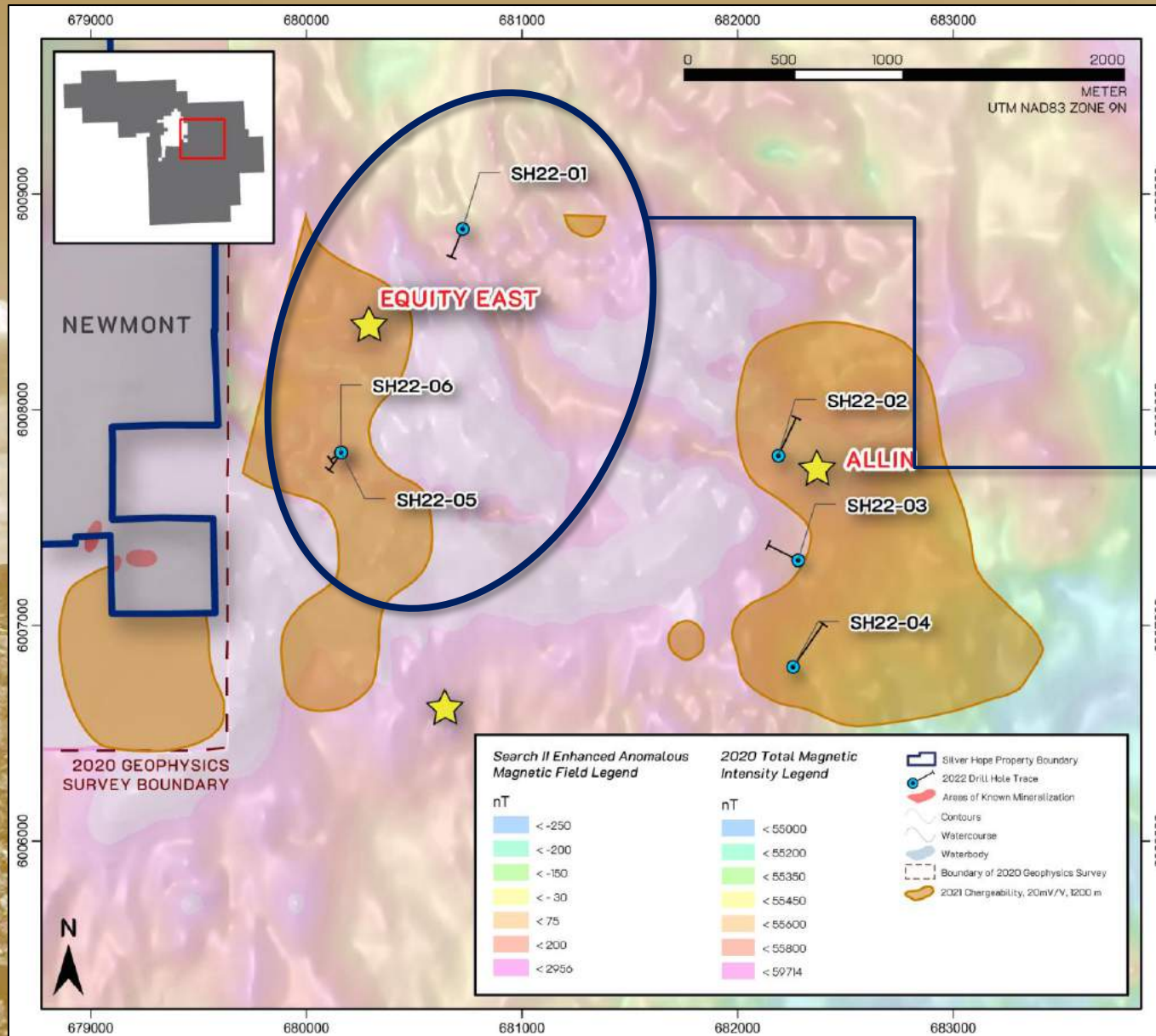
The Equity East, Allin and Main Trend target areas host multi-element geochemical anomalies along the mapped Goosly and Nanika Stock.



- ▶ 22 km of completed IP survey over Equity East & Allin targets
- ▶ Large *chargeability & resistivity anomalies* along edges and within *airborne magnetic high anomaly*, correlate with multi-element surface *geochemical anomalies*



# SILVER HOPE 2022 DRILLING



6 drillholes totalling 1,461 m (3 at Equity East and 3 at Allin)

- ▶ Alteration, veining, and mineralization in 2022 drilling suggests that these showings are **peripheral to mineralization and heat sources**.
- ▶ Multielement surface geochemistry, IP and magnetic anomalies suggest **multiple targets**.

## EQUITY EAST

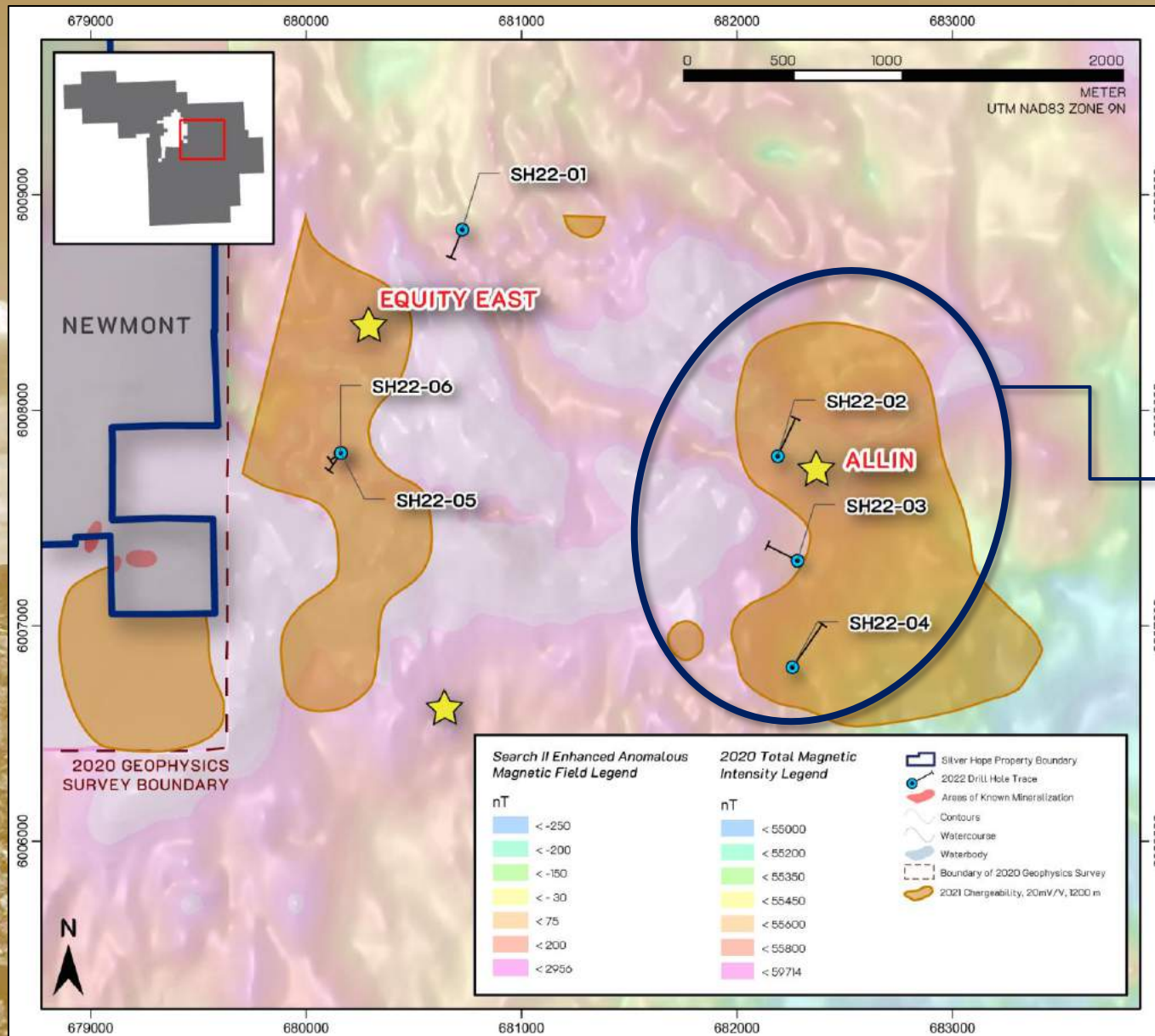
Drilling intersected **Late Paleocene Ootsa Lake Group andesites** and underlying **Goosly Intrusive suite monzonites** likely explaining the magnetic high anomaly. **Variable clay (kaolinite)-chlorite-illite** associated with mineralization.

**SH22-01:** Intersected **0.81 m** assaying **47.9 g/t Ag, 2.5% Pb and 4.53% Zn** from 74.92 m.

**SH22-05:** Intersected **1-4 mm galena-sphalerite-chalcopryrite veins** similarly oriented to Main Trend mineralized veining.



# SILVER HOPE 2022 DRILLING



6 drillholes totalling 1,461 m (3 at Equity East and 3 at Allin)

- ▶ Alteration, veining, and mineralization in 2022 drilling suggests that these showings are *peripheral to mineralization and heat sources*.
- ▶ Multielement surface geochemistry, IP and magnetic anomalies suggest *multiple targets*.

## ALLIN

Drilling intersected *trachyandesite flows, monzonite sills* and *biotite-rich monzonite dikes*.

SH22-02: Hosted *peripheral porphyry Cu-Mo-Au related alteration* with spotty quartz veining and *increasing gypsum veining, increasing clay-chlorite* and *decreasing illite* at depth.

SH22-03 & SH22-04: Displayed *weak pyrite and vuggy carbonate veining* with *increasing chlorite±clay alteration relative to illite alteration* at depth.



*The Silver Hope Property has the potential for Cu-Ag-Mo mineralization at significant volume within the Main Trend and West Horizon Cu-Mo QMZ.*

- ▶ **Strategic drilling** with infill holes targeting the Gaul, Superstition, Hope and West Horizon could be done quickly to **estimate a significant resource**.
- ▶ The **Main Trend** is along a **>4 km known mineralized trend** with the past producing **Equity Silver Mine**.
- ▶ **Good infrastructure and access** year-round resulting in **low drilling costs**.
- ▶ Only a small portion (<17%) of the 21,690 Ha property has been explored.
- ▶ Several **greenfields targets** still exist including the **Equity East, Allin, and Sam Zones**.
- ▶ Recent **increased understanding** of the **Goosly Intrusive Complex geology** east of the Main Trend and Equity Silver Mine has opened the **possibility for new mineralization discoveries** associated with previously unexplored areas.



# FINLAY MINERALS LTD.

TSX-V: FYL | OTCQB: FYMNF

**ROBERT F. BROWN, P. ENG.**

*President, CEO and Director*

604.684.3099 | [rbrown@finlayminerals.com](mailto:rbrown@finlayminerals.com)

