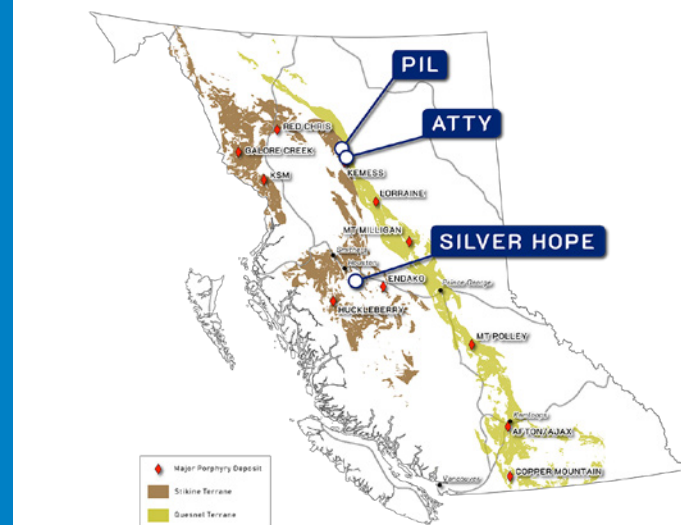


FINLAY MINERALS LTD.

TSX-V: FYL | OTC: FYMNF | FINLAYMINERALS.COM

COMPANY HIGHLIGHTS

- Experienced Management and Board of Directors with proven track record of discovery.
- All Finlay's properties lie within the Stikine Terrane that hosts many of BC's former and active mines.
- Finlay has a tight and judicious operating budget with greater than 70% of all funds raised going directly to exploration.
- Each of Finlay's properties are currently permitted for exploration drilling and have good communication and engagement with the local First Nations.
- The Silver Hope Property has low cost per metre exploration costs and can be explored year round.



SILVER HOPE PROJECT

HOUSTON AREA, BRITISH COLUMBIA

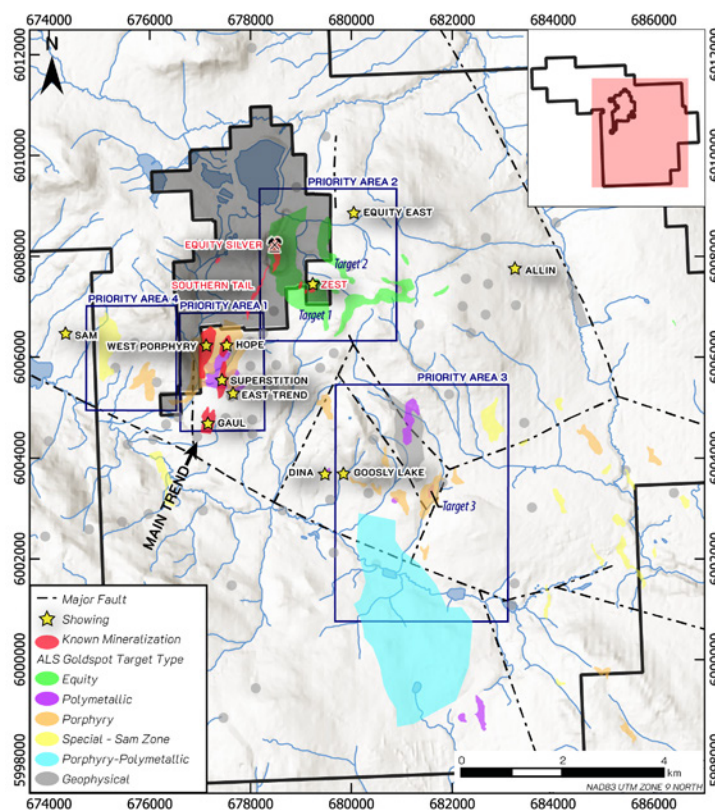
TARGETS: Polymetallic Cu-Ag-Au (**Main Trend**), Co-Mo porphyry (**West Porphyry**), Equity Silver type Cu-Ag-Au (**Zest**), & Ag-Pb-Zn (**Sam**).

The 21,690 hectare Silver Hope Property adjoins, surrounds and is on-trend with the former Equity Silver Mine, once BC's largest silver mine (71M oz silver, 185M lbs copper & 508,000 oz gold from 33.8M tonnes).

(Ref: <http://minfile.gov.bc.ca/Summary.aspx?minfilno=093L++001>)

The Silver Hope has year-round accessibility, pre-existing infrastructure and holds a multi-year exploration permit; it is only 17% ground-truthed and only 2% drill-tested with 113 targets identified by ALS GoldSpot in 2023, 16 of which are high priority and these include:

- The **Main Trend** including the Gaul Zone where drilling intersected **76.57m grading 0.45% copper, 14.6 g/t silver and 0.14 g/t gold** and which is ready for resource definition drilling.
- The **East Trend**, newly identified in 2023 by both ALS GoldSpot and the 2023 biogeochemical field program, also presents a near-surface geophysical chargeability and resistivity anomaly.
- The **West** copper-molybdenum **Porphyry** immediately adjacent and contiguous with the Main Trend.
- Other compelling targets on the Silver Hope are: the **Sam, Zest, Allin, Equity East** and southeast of the **Dina/Goosley** showings.



AT OUR CORE:

EXCEPTIONAL ASSETS + TECHNICAL EXCELLENCE = ROAD TO DISCOVERY

ATTY PROJECT

TOODOGGONE REGION, BRITISH COLUMBIA

TARGETS: Cu-Au-Mo porphyry (**KEM**) and related Au-Ag-Cu-Pb-Zn (**Attycelley**) epithermal systems.

The 4,498 hectare ATTY Property is positioned in the heart of the Toodoggone, sandwiched between AMARC- Freeport McMoRan's Joy Property and Centerra Gold's Kemess Property. It has a favourable geological environment with similar geology to the Kemess North Trend, hosting Centerra Gold's Kemess Underground and Kemess East deposits.

The property has 8 mineral targets including the **KEM**, **Attycelley** and **Wrich**; the **Attycelley** and **KEM** are drill-ready.

PIL PROJECT

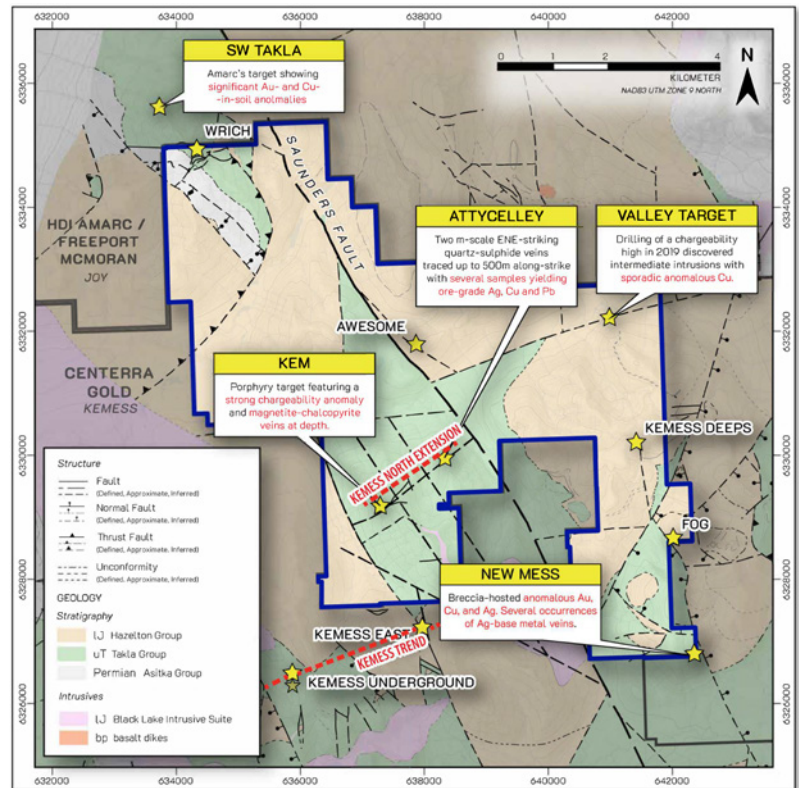
TOODOGGONE REGION, BRITISH COLUMBIA

TARGETS: Cu-Au-Mo porphyry systems and related Au-Ag vein systems.

The PIL, Finlay's second Toodoggone property encompassing 13,967 hectares north of the ATTY, is in its third year of a five-year option to Cascadia Minerals Ltd. (formerly ATAC Resources Ltd.)

Cascadia's 2023 exploration program included a TITAN Deep IP survey of **PIL South** which was successful in identifying a porphyry signature below previous shallow Finlay drilling and extensive work in the northeastern **Spruce Zone** where high-grade rock samples (**including 9.01% copper, 212 g/t silver & 0.26 g/t gold**) have outlined a 2.6km north east mineralized trend and soil sampling outlined a copper-gold-molybdenum anomaly.

Cascadia's 2024 exploration plans include drilling and further target definition.



MANAGEMENT & DIRECTORS

Robert Brown, P. Eng.
David Schwartz, B.Comm., JD
Gord Steblin, B.Comm, CPG, CGA
Wade Barnes, B.Sc., P. Geo
Ilona Barakso Lindsay, B.Sc.
Alvin Jackson, B.Sc.
Dr John A. Barakso, DMD
Kristina Walcott

President, CEO, and Director
Secretary and Director
CFO
VP, Exploration and QP
VP Corporate Relations, and Director
Director
Director
Director

SHARE STRUCTURE

TSX-V: FYL | OTC: FYMNF
Shares: 138,111,232
Options: 10,400,000
Warrants: 20,815,049
Fully Diluted: 169,326,281

*Over 50% controlled by
insiders; no debt.*

Finlay Minerals Ltd.

Suite 615, 800 West Pender St.
Vancouver, B.C., Canada, V6C 2V6
T: 604.684.3099
info@finlayminerals.com
finlayminerals.com

Front page header image: A closeup of mineralization from photo of Silver Hope Core SH04-03A from the Gaul Zone.

Finlay Mineral's disclosure of a technical or scientific nature has been reviewed by Wade Barnes, P. Geo., VP Exploration of Finlay Minerals Ltd., and a Qualified Person under the definition of National Instrument 43-101. Finlay Minerals Ltd. ("the Company") expressly warns readers not to rely on the information herein for investment or other related purposes. Accordingly, any use of this information is at the reader's risk and without liability to the Company. The information contained herein is not to be construed as either public or private offer or solicitation to purchase securities in the capital stock of Finlay Minerals Ltd. The reader is referred to his/her professional investment advisor regarding investment or related decisions respecting the securities of the Company.

January, 2024